

GRAND HALL

Main Floor

CAPACITY

550 total

Main floor (inclined floor)

- 400 in cushioned pews
- 4 sections (13-14 rows each center & side aisles)

Balcony

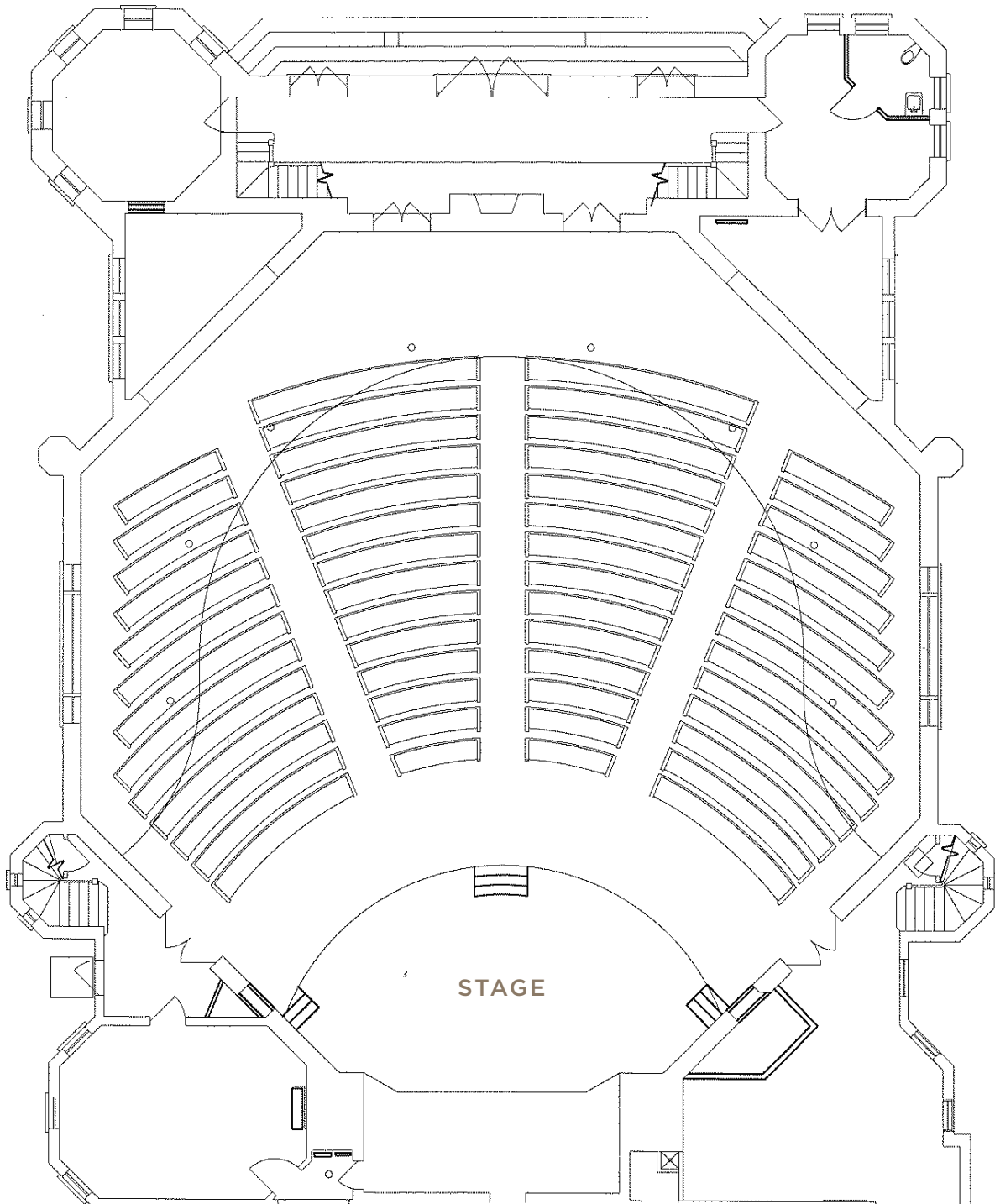
- 150 in cushioned pews
- 4 sections (3 rows each)

Semi-circular thrust stage (34' x 18')

- Organ console & piano positioned on stage

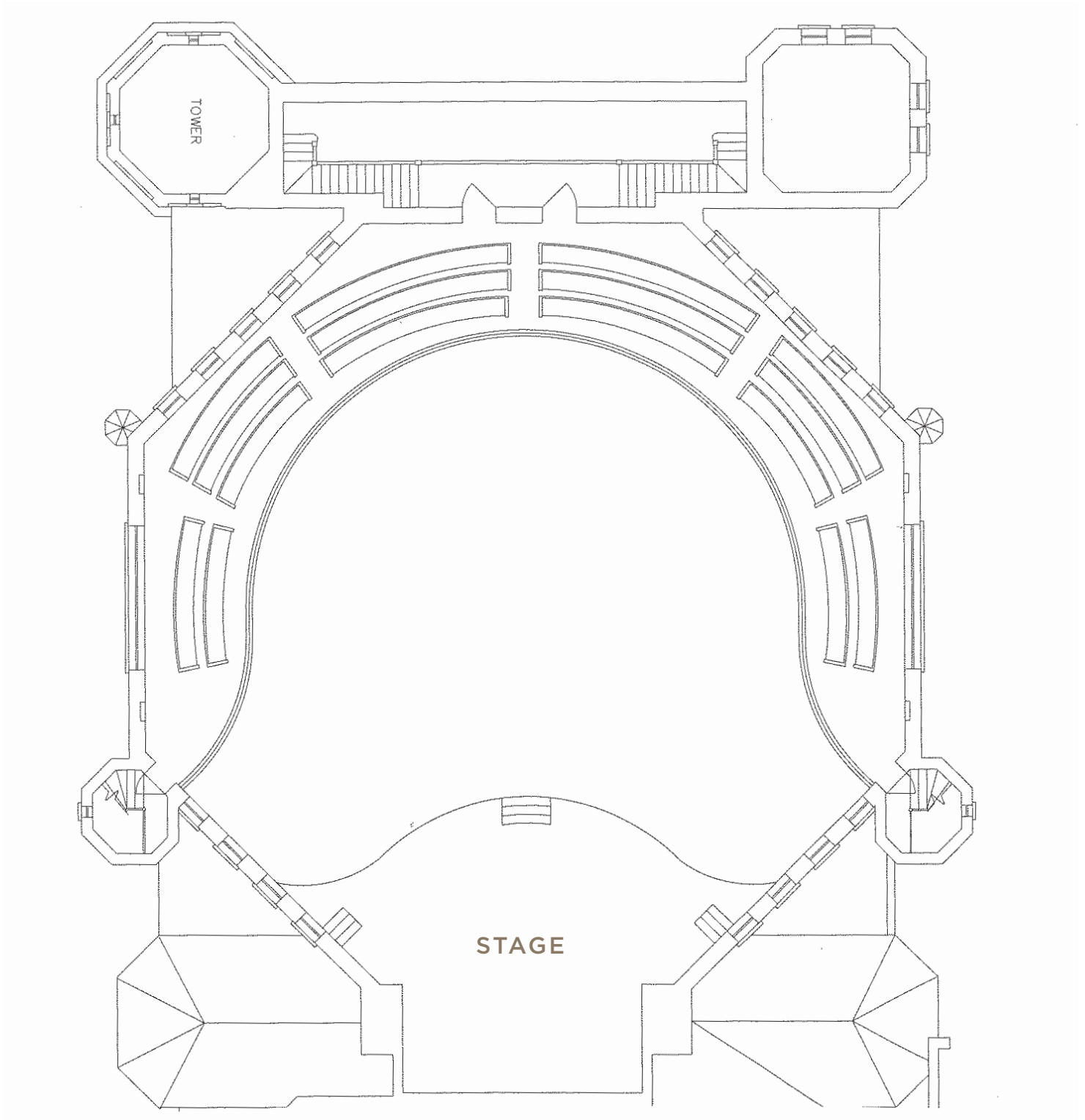
SPECIAL FEATURES

- Restored organ with stenciled & gilded pipes
- Steinway Model D concert grand piano
- Theatrical stage lighting
- Sound amplification system
- Retractable screen and concealed projector
- Multiple colored lighting effects for ceiling, dome & gilded chandelier
- Bride's dressing room
- Groom's waiting room



GRAND HALL

Balcony



COOK THEATER

1st Floor

CAPACITY

Theater (1625 sq. ft.)

- 200 theater seating
- 150 seated dinner
- 300 standing reception
- 100 classroom seating

Theater / adjacent rooms (2685 sq. ft.)

- 225 theater seating
- 250 seated dinner
- 200 seated with dance floor
- 350 standing reception

Theater / adjacent rooms / mezzanine
(4410 sq. ft.)

- 370 seated dinner
- 300 seated with dance floor
- 450 standing reception

SPECIAL FEATURES

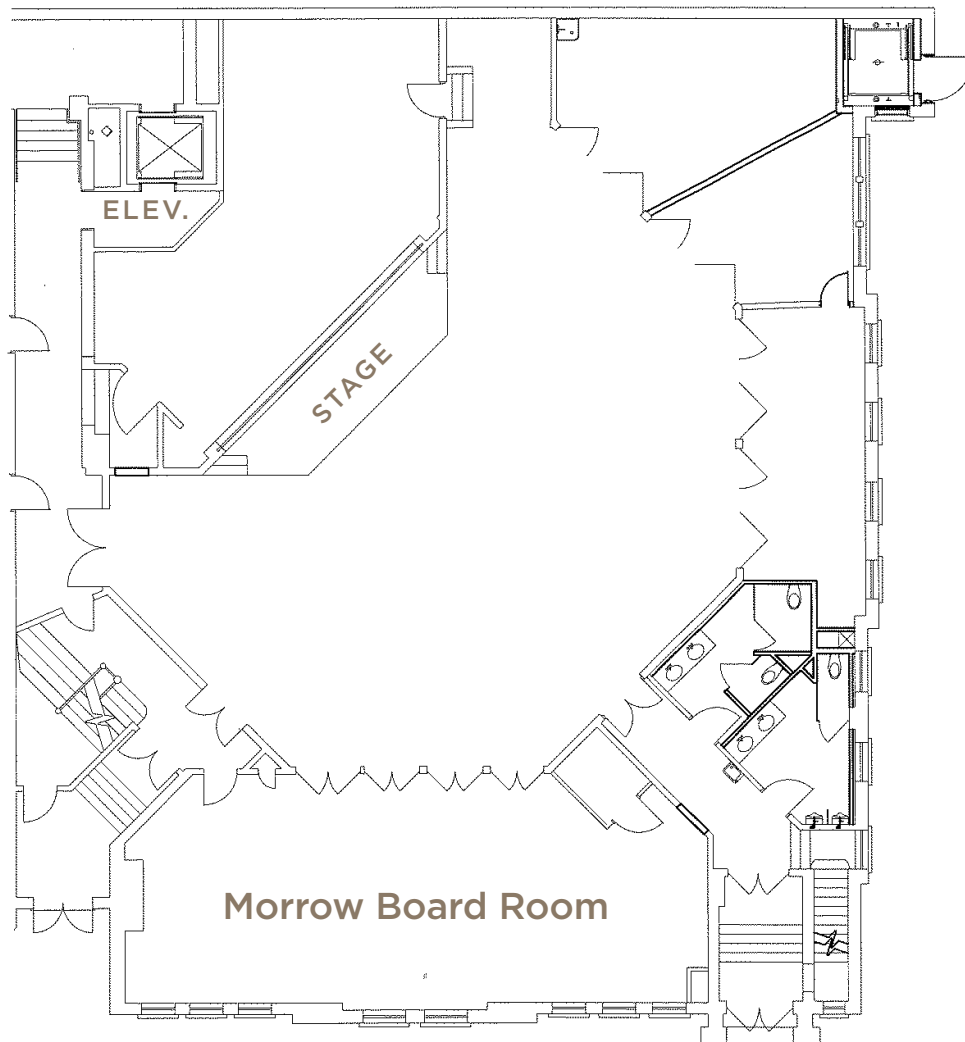
- Theatrical stage lighting
- Sound amplification system
- Retractable screen and concealed projector
- Catering service kitchens on main level & mezzanine
- Automatic shades for clerestory windows
- Original fir walls & ceiling; antique chandelier
- Proscenium stage with sound & lighting systems & curtains
- Yamaha C-3 piano on stage

Morrow Board Room

11' wide x 51' long (561 sq. ft.)

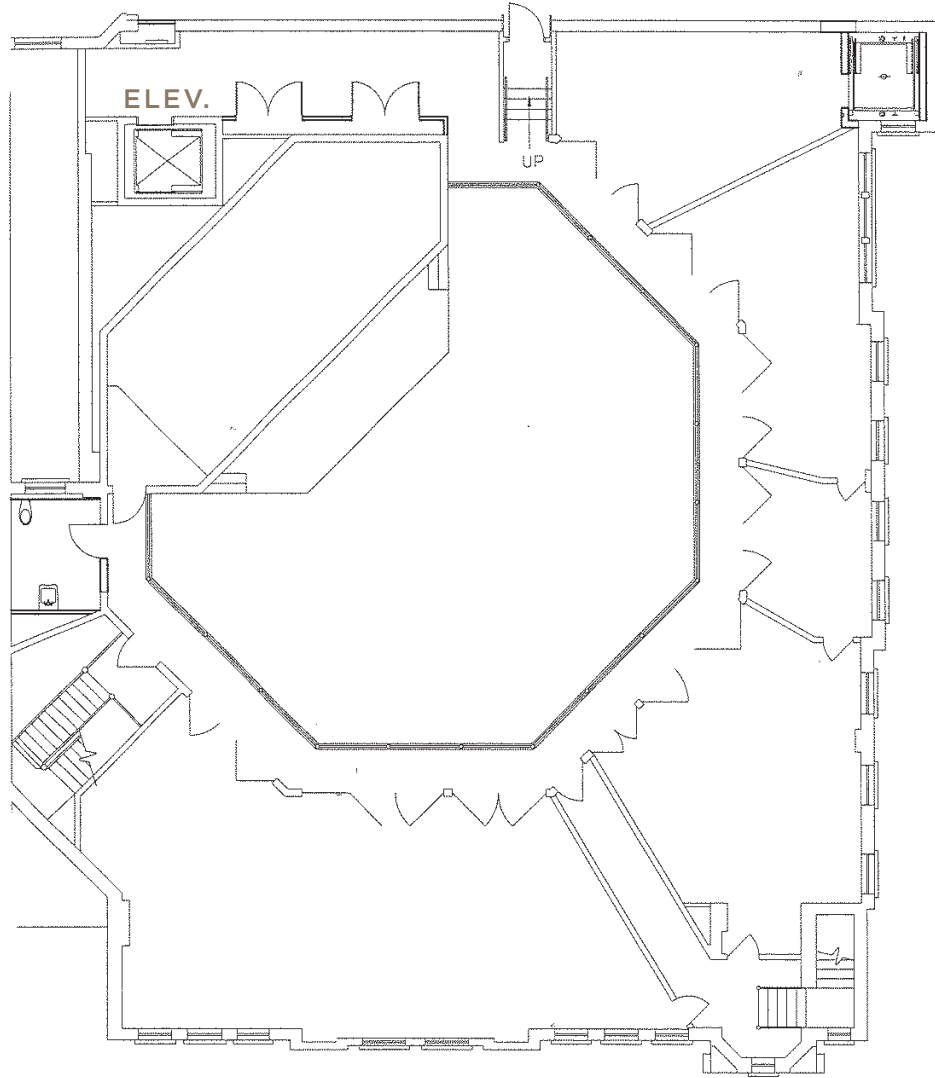
- 38 board room seating
- 60 theater seating
- 60 seated dinner
- 40 classroom seating
- 100 standing reception

- Retractable screen and concealed projector
- Sound system
- Fireplace; antique chandelier



COOK THEATER

Mezzanine



RAPP FAMILY GALLERY

Basement Level

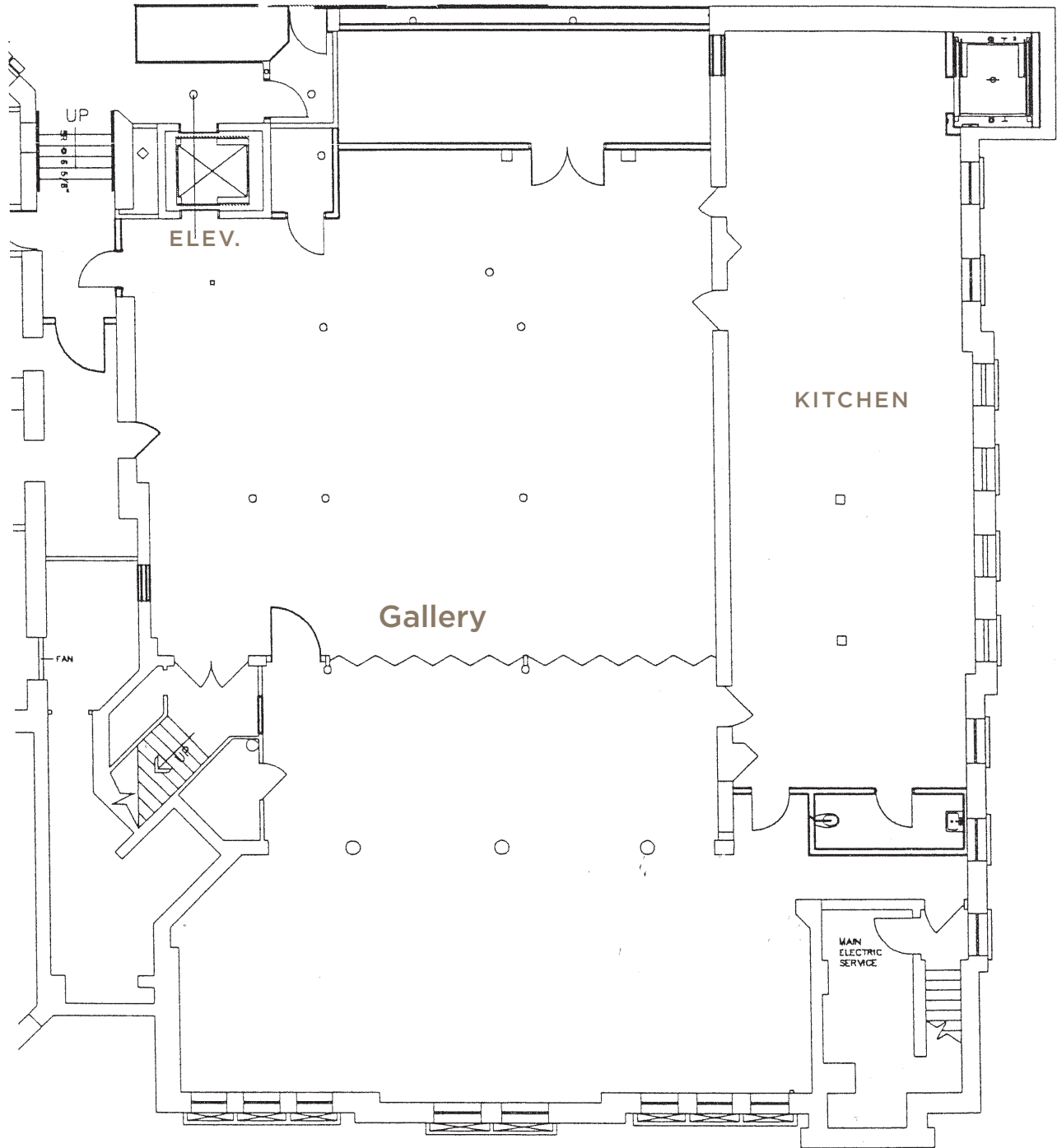
CAPACITY

46' wide x 75' long (3450 sq. ft.)

- 120 seated dinner
- 120 standing reception
- 33 board room seating
- 40 classroom seating
- 75 theater seating

SPECIAL FEATURES

- Gallery lighting and exhibit system
- Drapes; fireplace
- Retractable acoustical dividing wall



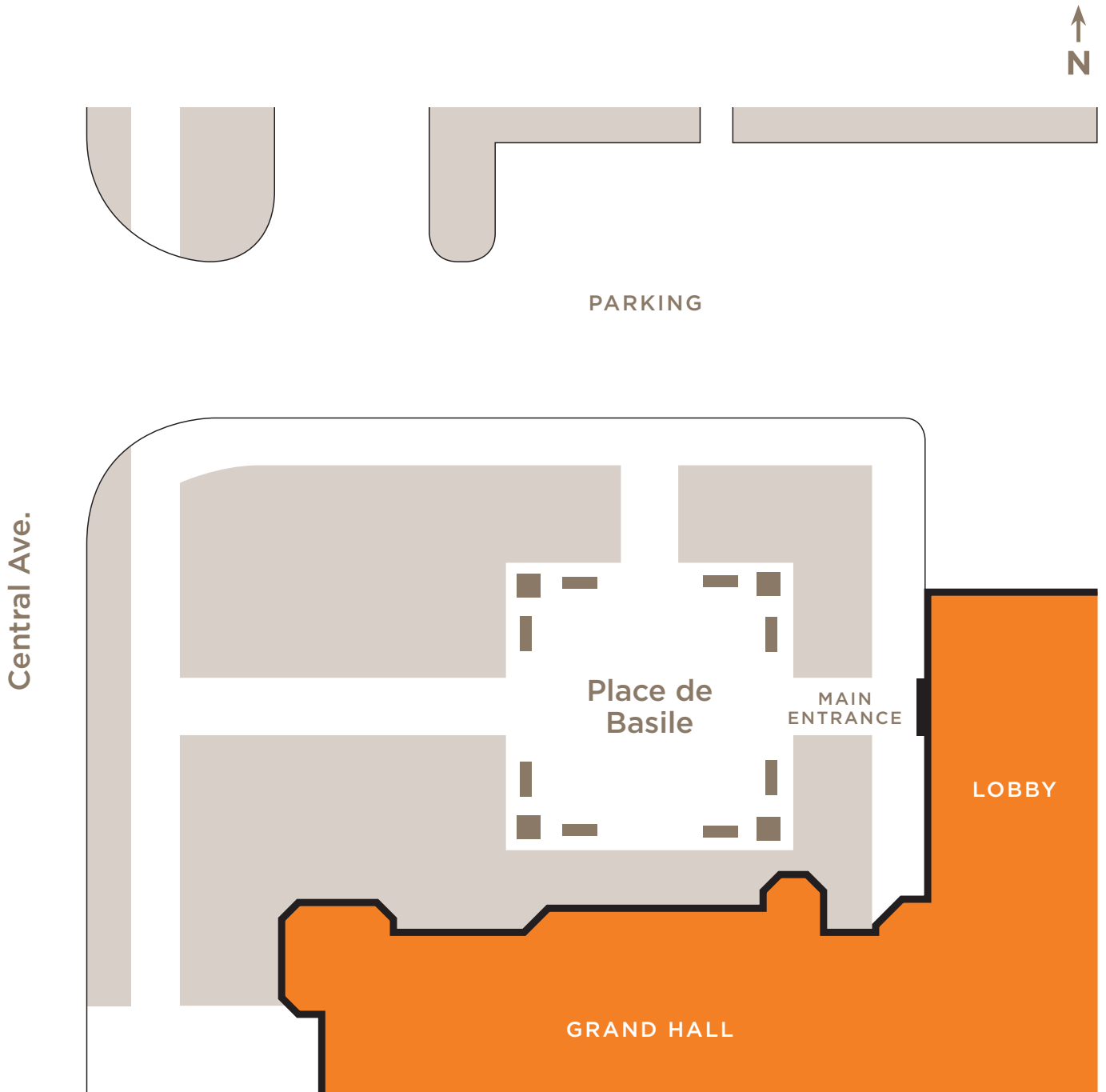
INDIANA LANDMARKS CENTER
**PLACE DE BASILE
COURTYARD**

CAPACITY

- 40' x 40' (1600 sq. ft.)
- 200 standing reception

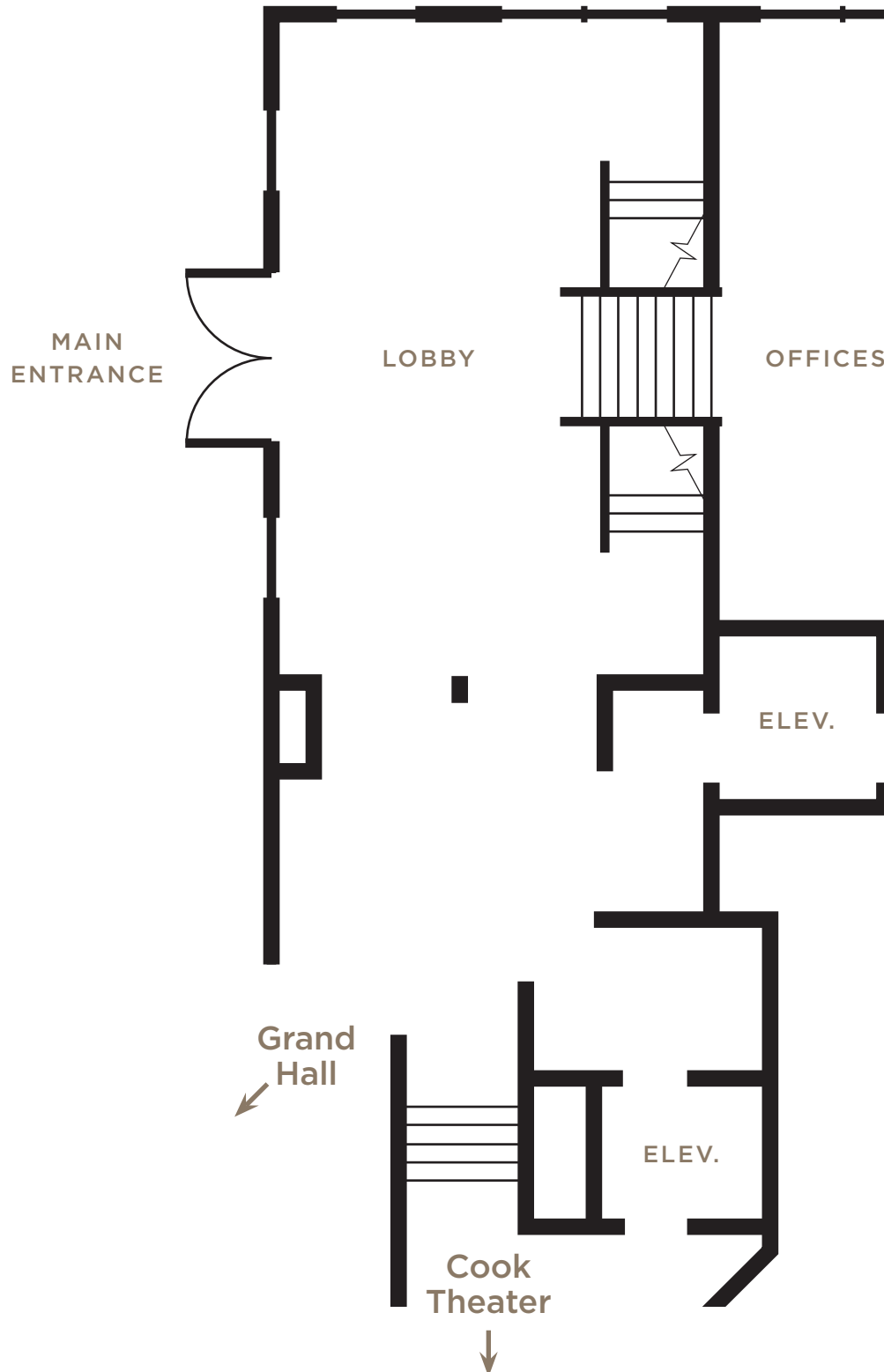
SPECIAL FEATURES

- accommodates 30' x 30' tent



LOBBY

Ground Level



MORRIS-BUTLER HOUSE 1st Floor

CAPACITY

Parlor

Ideal for ceremonies, dinners, luncheons, lectures, meetings, seminars

17' wide x 30' long (510 sq. ft.)

- 40 seated ceremony
- 32 seated dinner
- 40 standing reception

SPECIAL FEATURES

- Victorian gilded & crystal chandelier, gilded mirror, marble fireplace, crown molding
- Decorative plaster detail in ceiling
- Landscape paintings by noted Indiana artist Jacob Cox
- Entry hall with Victorian furniture (can be used as registration/welcome area)

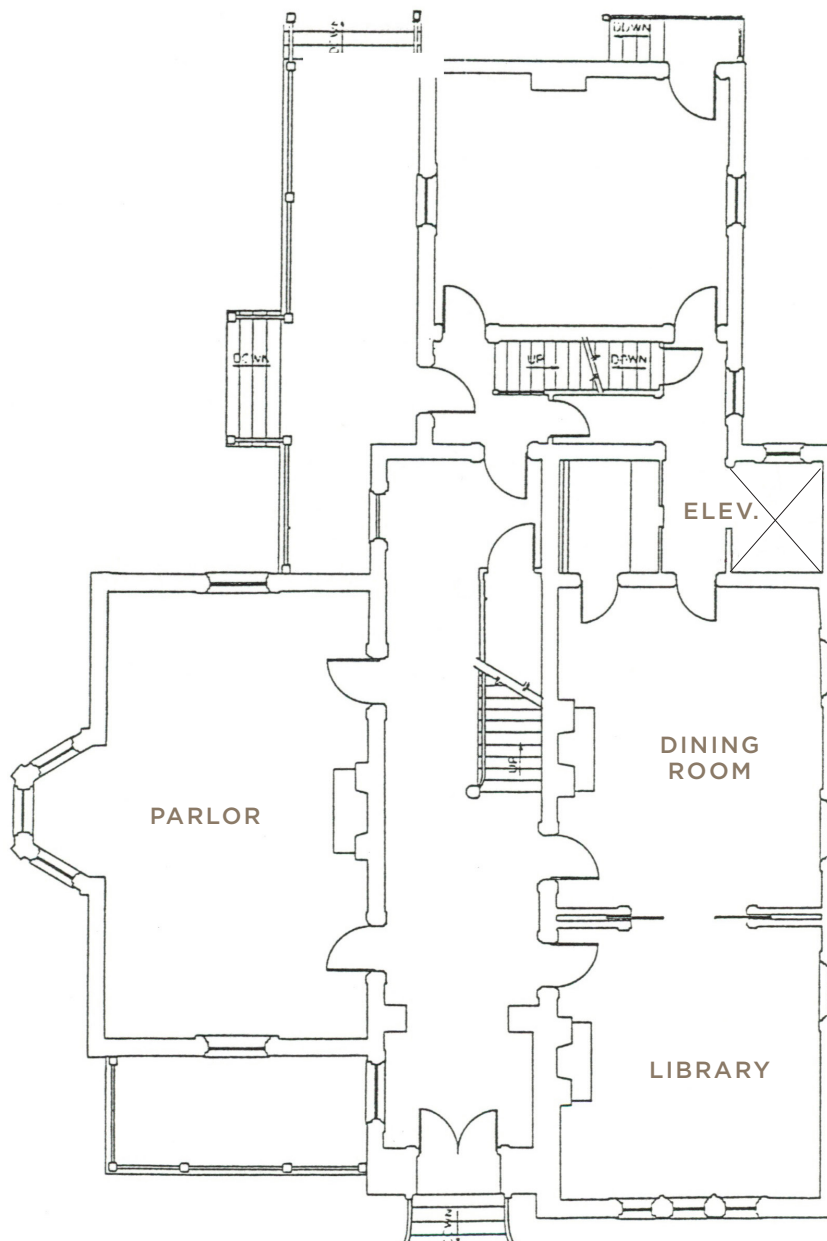
Dining Room & Library

Ideal for dinners, luncheons, teas, lectures, meetings, seminars

15' wide x 36' long (540 sq. ft.)

- 40 seated reception or dinner
- 40 standing reception

- Adjoining rooms with 6.5-ft opening between
- Victorian furnishings
- Fireplace in each room
- Entry hall with Victorian furniture (can be used as registration/welcome area)



MORRIS-BUTLER HOUSE Exterior

CAPACITY

Lawn

Ideal for ceremonies, receptions, picturesque location for wedding party photos

- Accommodates:
 - 40' x 40' tent on southwest lawn
 - 40' x 40' tent on northeast lawn
 - 20' x 40' tent on north lawn
- 125 seated ceremony
- 250 standing reception

SPECIAL FEATURES

- Sizeable lawn on east and south sides of Victorian-era house

