

THE DOWNTOWN GARY TACTICAL URBANISM LABORATORY

Model Improvements for the Broadway Corridor

HIT THE TRAIL:

Art, History & Tactical Urbanism
Along Gary's Fitness Trail

David W. Wright – Gary Public Transportation Corporation
Erin Sherrow-Hayse – Purdue University Extension



THE DOWNTOWN GARY TACTICAL URBANISM LABORATORY

Model Improvements for the Broadway Corridor

HIT THE TRAIL:

Art, History & Tactical Urbanism
Along Gary's Fitness Trail

DISCUSSION OBJECTIVES

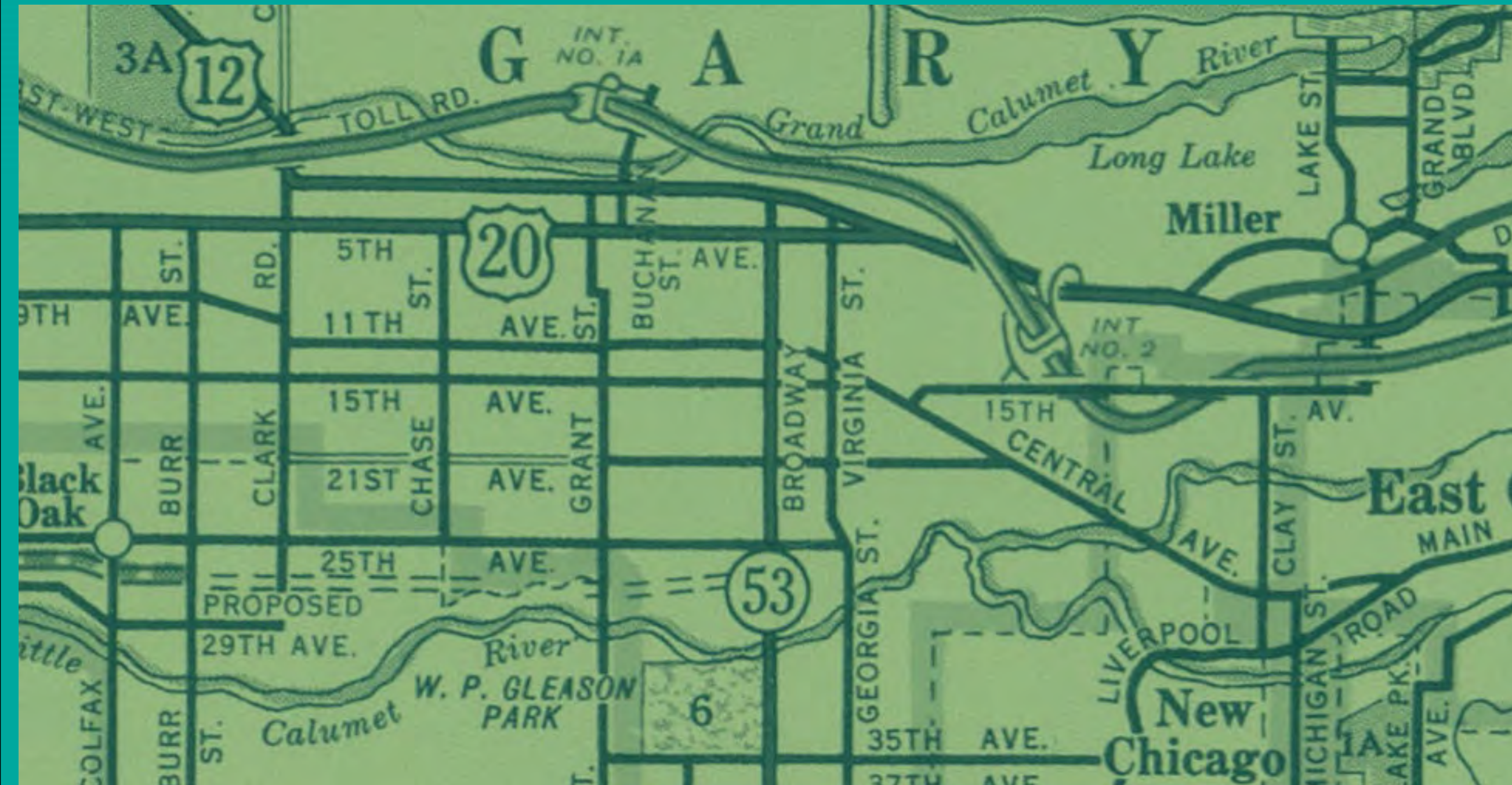
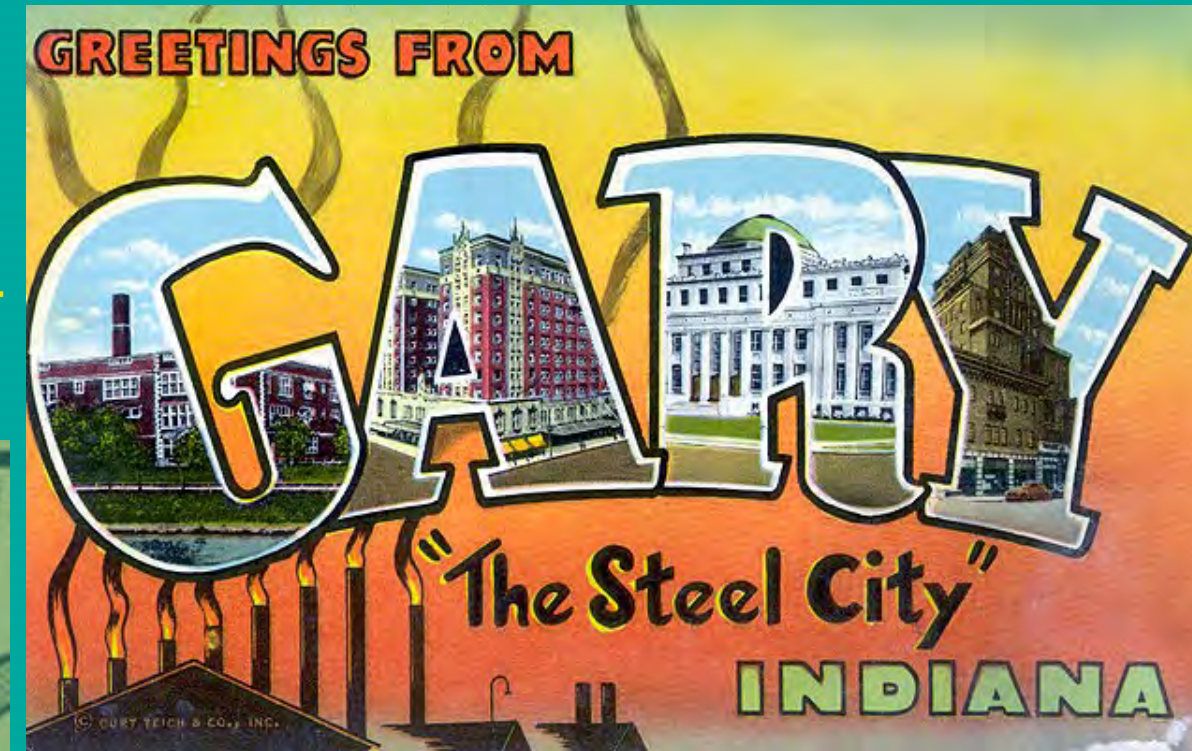
- Project Development: Concept to Scope to Implementation
- Grant-writing: Cobbling Together the Funding
- Outside-the-Diamond (you'll get it in a minute) thinking: Youth Component, Contests, Awareness
- Collaboration-Building



THE DOWNTOWN GARY TACTICAL URBANISM LABORATORY

Model Improvements for the Broadway Corridor

THE DOWNTOWN PLANNING ENVIRONMENT

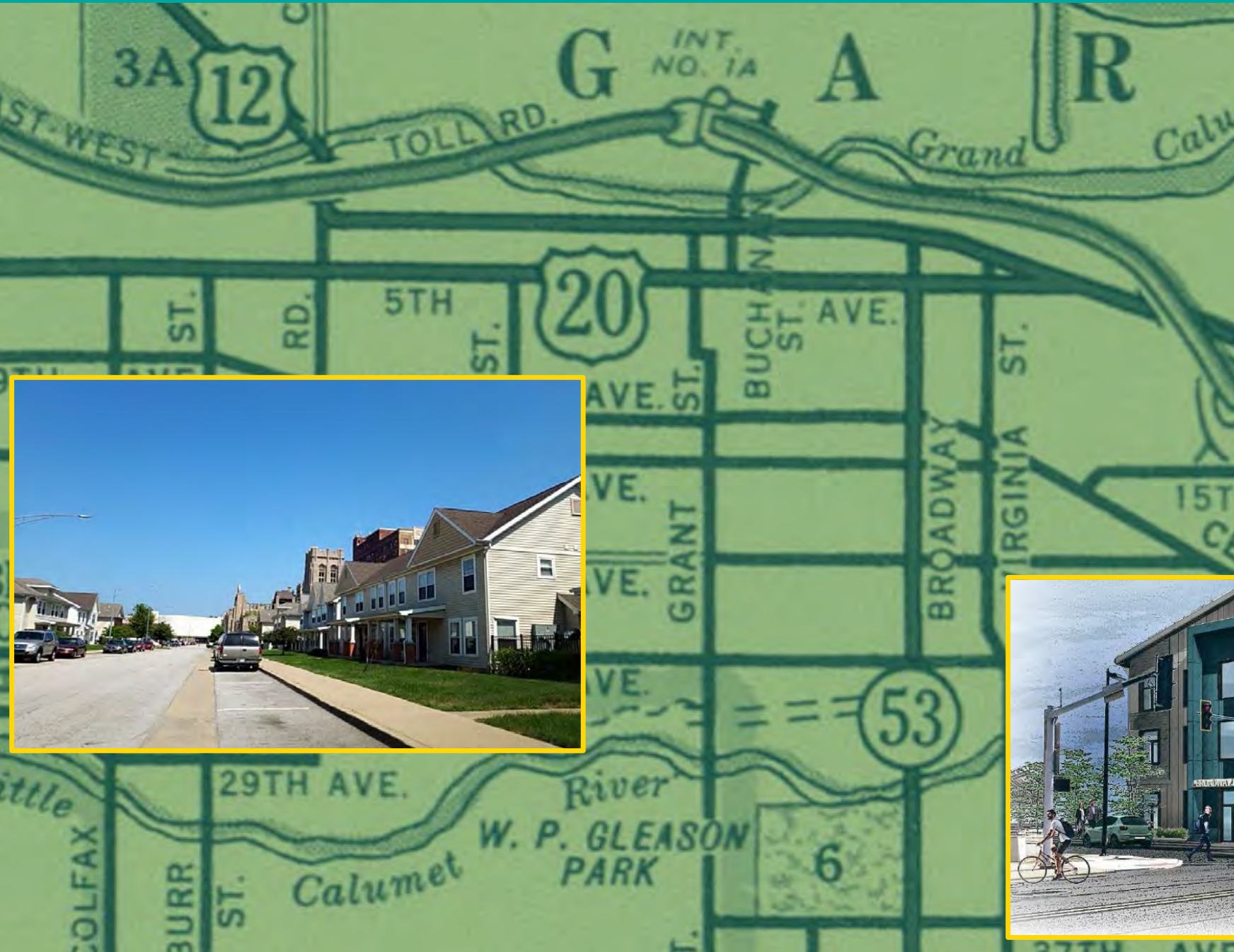
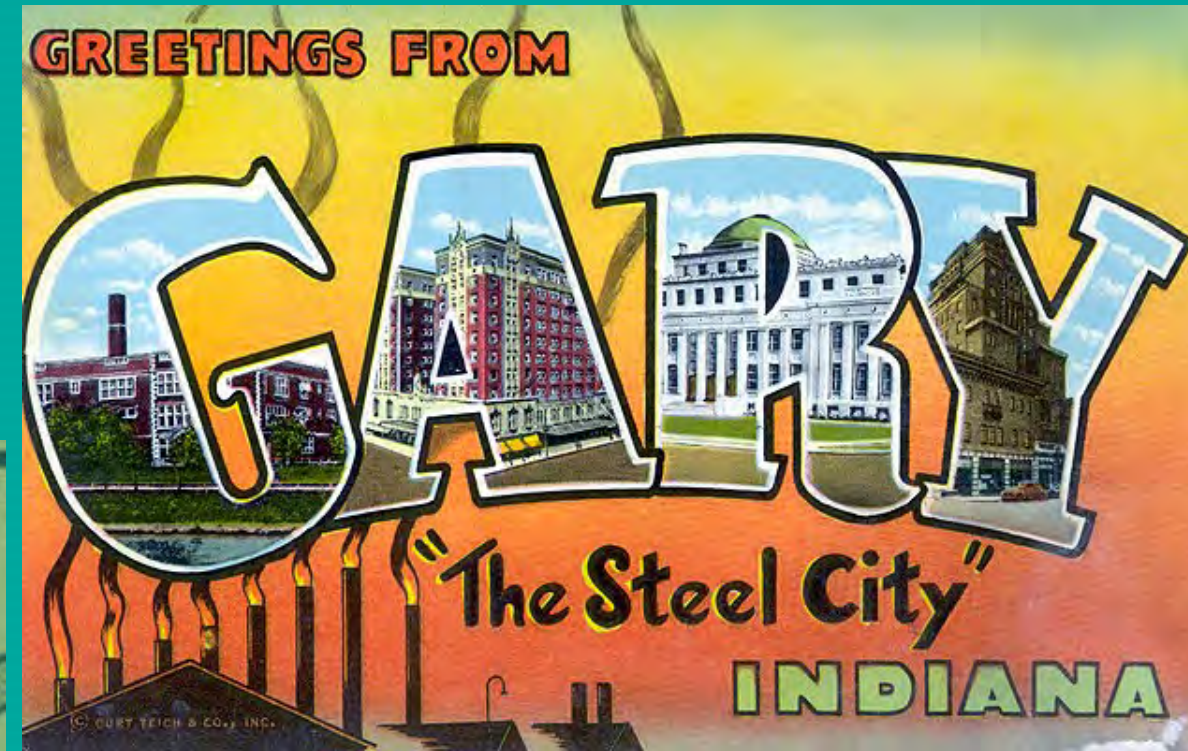


Base map: 1956 map of Hammond, Gary, Michigan City region

THE DOWNTOWN GARY TACTICAL URBANISM LABORATORY

Model Improvements for the Broadway Corridor

THE DOWNTOWN PLANNING ENVIRONMENT RESIDENTIAL

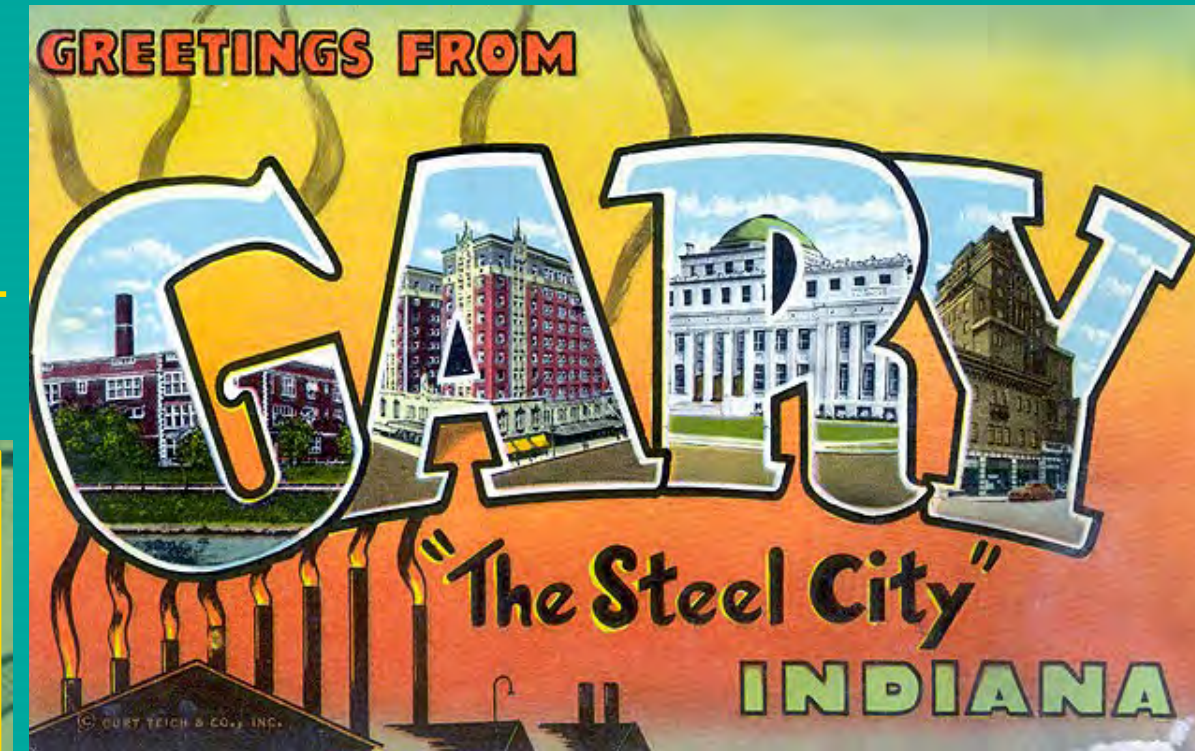
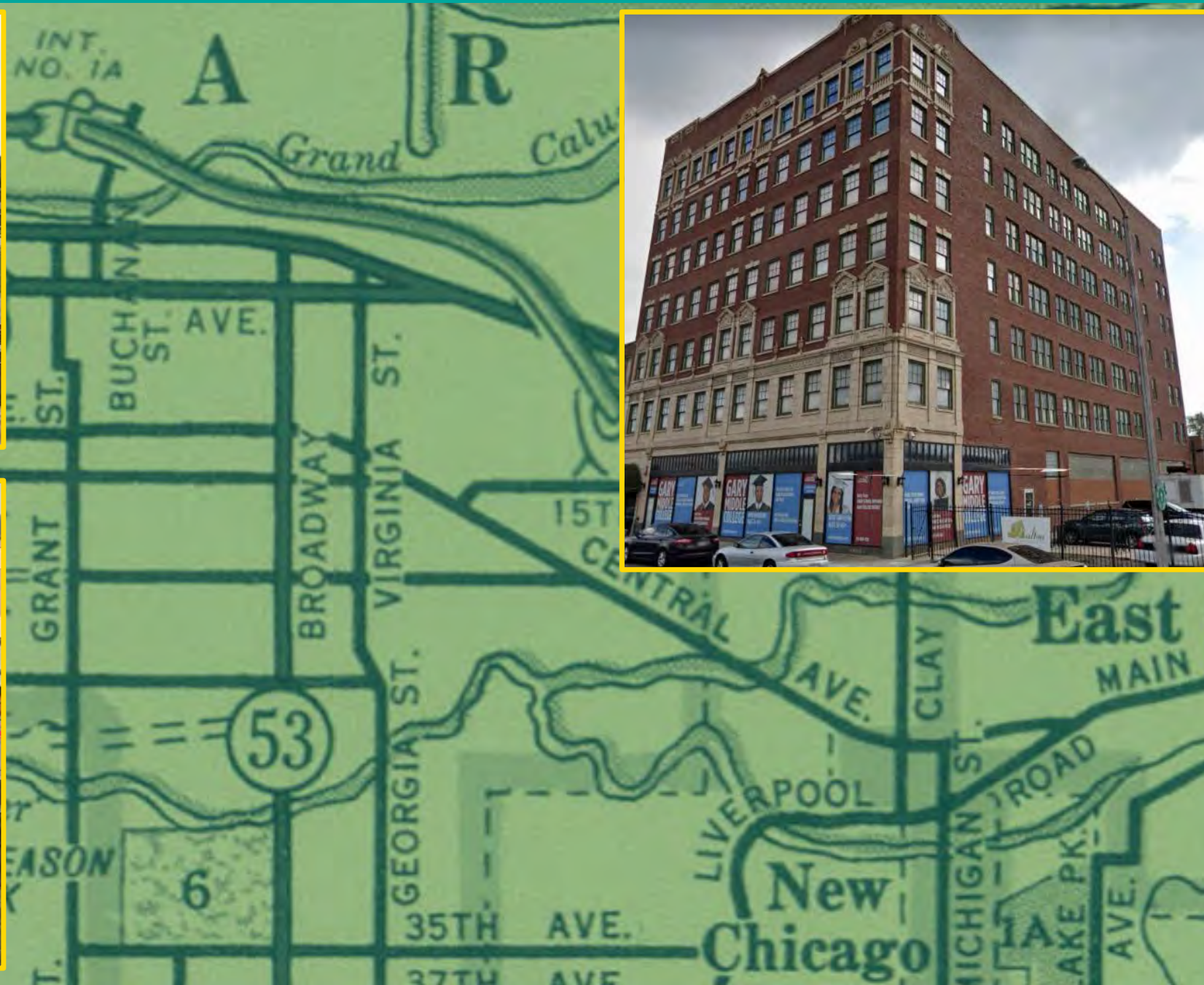


Base map: 1956 map of Hammond, Gary, Michigan City region

THE DOWNTOWN GARY TACTICAL URBANISM LABORATORY

Model Improvements for the Broadway Corridor

THE DOWNTOWN PLANNING ENVIRONMENT EDUCATIONAL

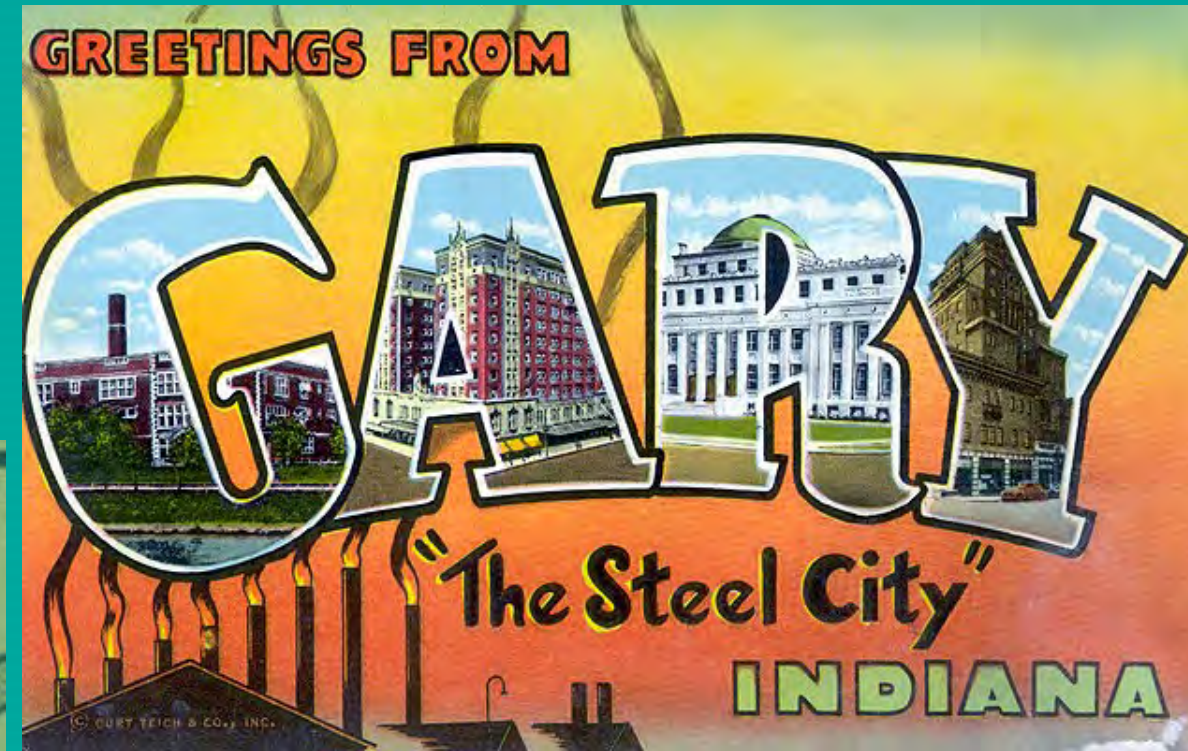


Base map: 1956 map of Hammond, Gary, Michigan City region

THE DOWNTOWN GARY TACTICAL URBANISM LABORATORY

Model Improvements for the Broadway Corridor

THE DOWNTOWN PLANNING ENVIRONMENT ART AND HISTORY



THE DOWNTOWN GARY TACTICAL URBANISM LABORATORY

Model Improvements for the Broadway Corridor

THE DOWNTOWN PLANNING ENVIRONMENT ART AND HISTORY

Connecting the Dots

- Creating a reason for activities in an urban environment
- Centering the positive assets
- Centering transit and transportation
- **PAYING FOR IT**



Base map: 1956 map of Hammond, Gary, Michigan City region

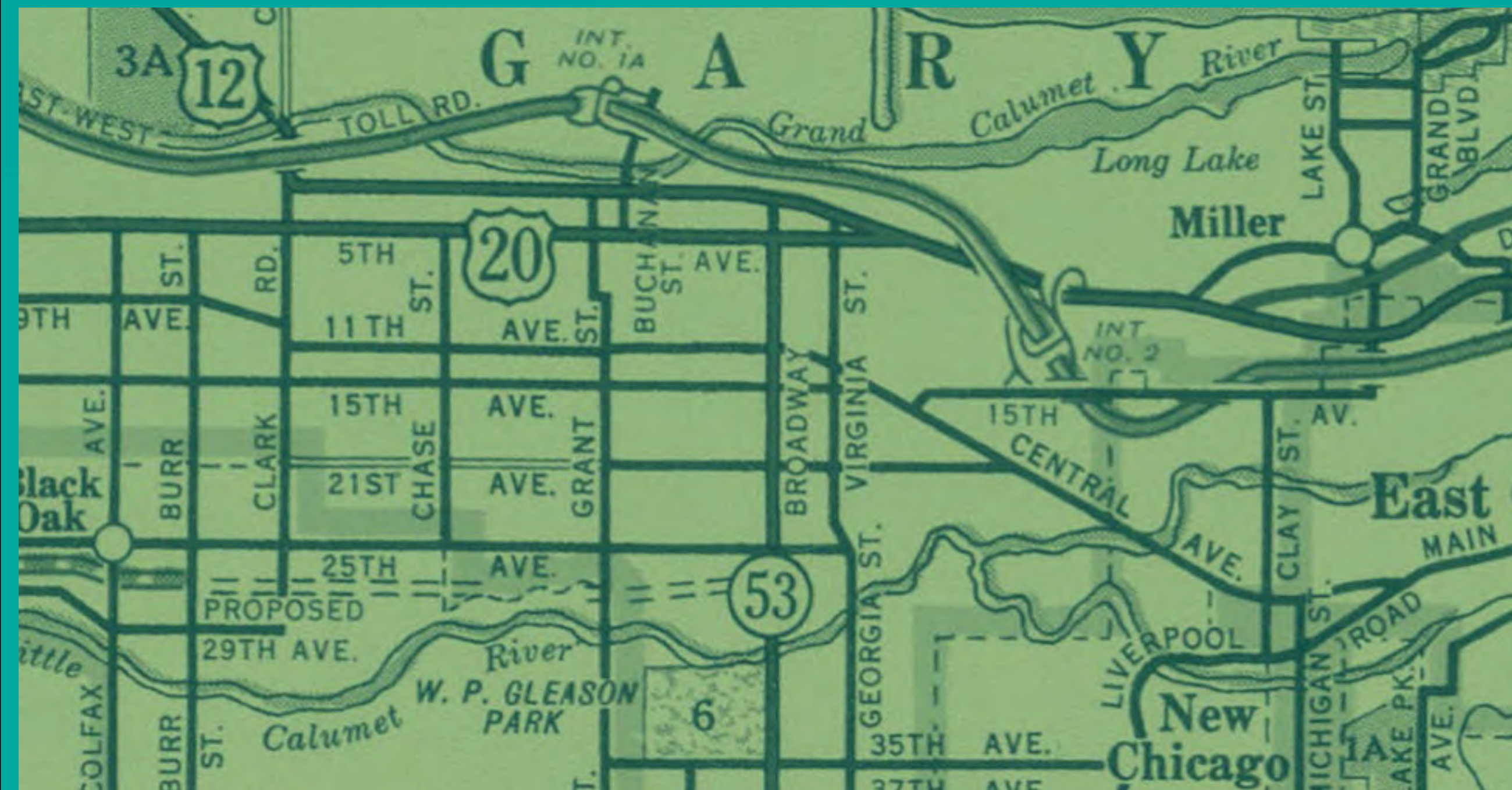
THE DOWNTOWN GARY TACTICAL URBANISM LABORATORY

Model Improvements for the Broadway Corridor

THE DOWNTOWN PLANNING ENVIRONMENT ART AND HISTORY

ART AND HISTORY TO..IMPROVE HEALTH?

- PSE = Policy, Systems and Environmental Change strategy to improve health
- Survey showed high need for places to be physically active in Gary



Base map: 1956 map of Hammond, Gary, Michigan City region

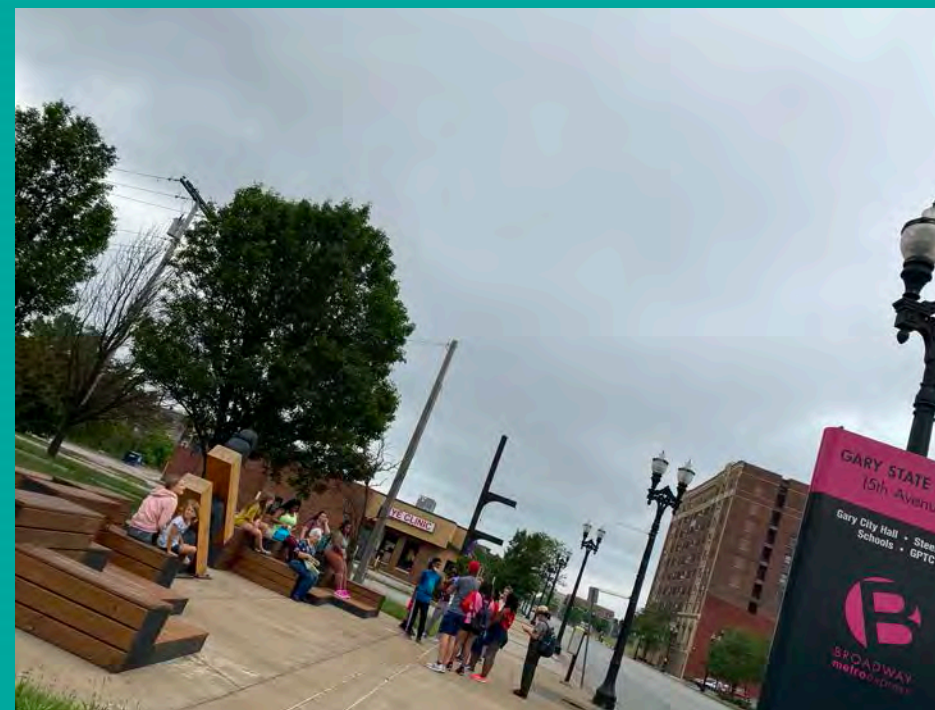
THE DOWNTOWN GARY TACTICAL URBANISM LABORATORY

Model Improvements for the Broadway Corridor

IMPLEMENTATION EFFORTS

PROOF OF CONCEPT

- Urban Hike in downtown Gary, Summer 2021
- Guided tour of most of the route
- Art and historic buildings researched



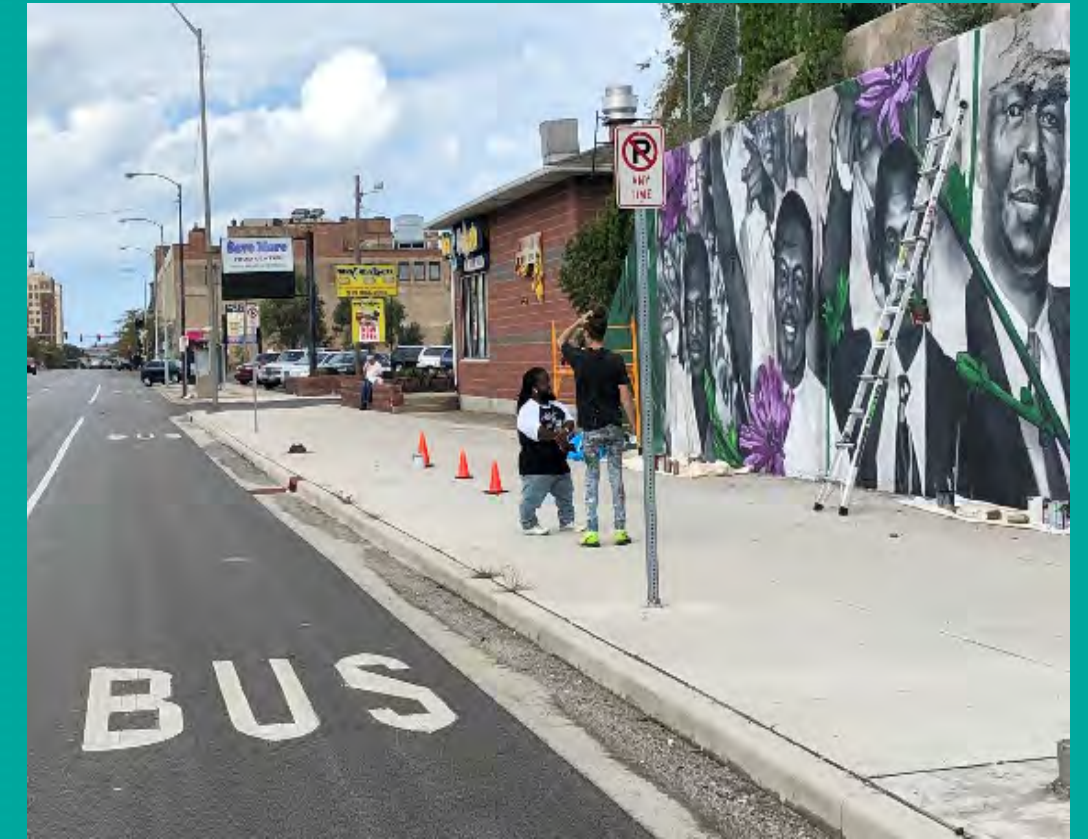
THE DOWNTOWN GARY TACTICAL URBANISM LABORATORY

Model Improvements for the Broadway Corridor

GRANT APPLICATION TO IN. DEPT. OF HEALTH

Project elements

- Crosswalks: installation of pedestrian pathways to demarcate crossing areas for riders/shoppers while alerting drivers
- Improved pedestrian environment in adjacent businesses
- Activity trail to promote transit use, connectivity to/between activity centers, art installations, bike trails and transit nodes

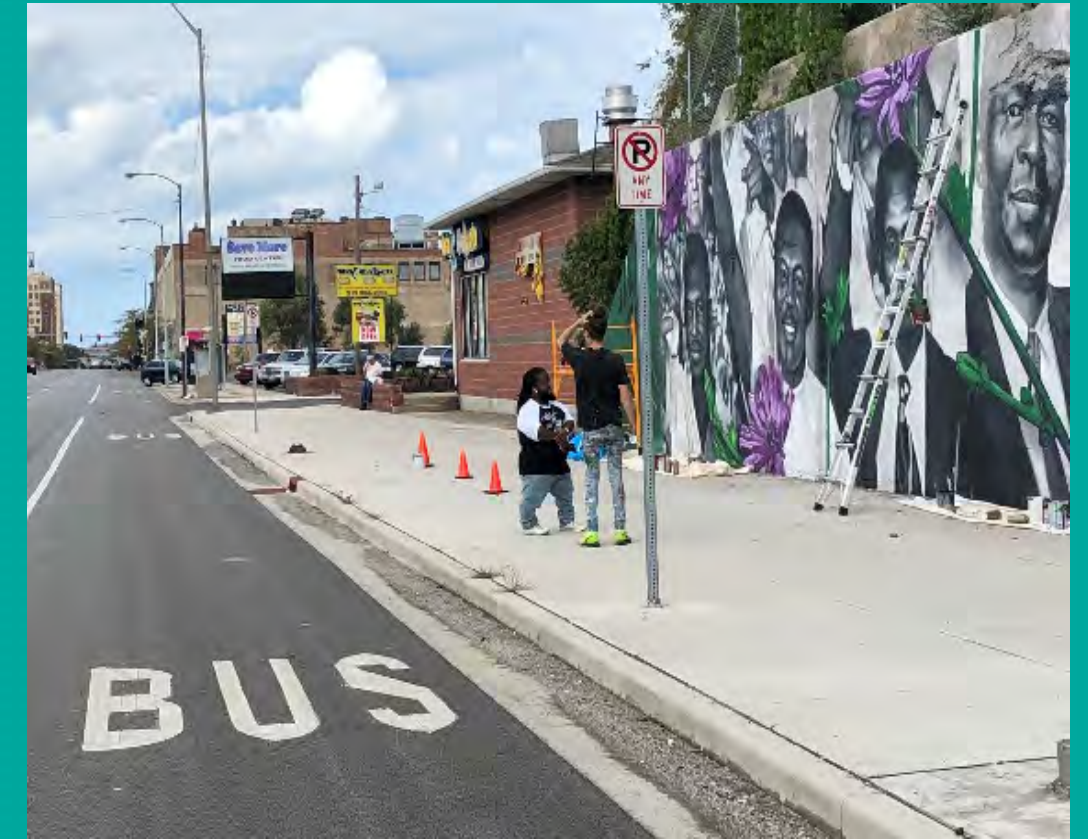


THE DOWNTOWN GARY TACTICAL URBANISM LABORATORY

Model Improvements for the Broadway Corridor

GRANT APPLICATION TO IN. DEPT. OF HEALTH

- Federal Transit Administration (FTA) funds would be combined with ISDH funds
- Existing GPTC marketing vendors would do design work, create website
- ISDH funded for two award cycles
- Additional America Walks grant funded street art within the Art and History Fitness Trail limits



THE DOWNTOWN GARY TACTICAL URBANISM LABORATORY

Model Improvements for the Broadway Corridor

IMPLEMENTATION EFFORTS

Public Input

- Polling on social media for priorities and scope
- Transit to Trails Program and the “Urban Hike” showcasing art and transit connections
- GPTC Fall Summit in November 2021





GPTC created a poll.
Published by David Wright · May 12 ·

The Gary Public Transportation Corporation has grant funding to make bus stops downtown safer for pedestrians using tactical urbanism - low-cost improvements with high impact. We need your input over the next few weeks. Please answer the first of several questions to help us make decisions:

In your opinion, which location below is most in need of vibrant, artistic crosswalk improvements?

1. 9th & Broadway. This location has no crosswalks directing pedestrians across Broadway between restaurants/grocery stores and bus stops.
2. Metro/Gateway. This location has no marked street-level crosswalk from the Metro Center, and other locations need more visibility due to high traffic speeds.

If you have other ideas, please share in the comments. Thank you for your input!

 54% Broadway at 9th Avenue	 46% Gateway Park/Metro Center
---	---

This poll has ended. 57 Votes

GPTC created a poll.
Published by David Wright · May 19 ·

Thank you for participating in our first Tactical Urbanism poll! Our next question concerns additional features that will make downtown Gary more “livable”.

In your opinion, which of these art/history features would have most impact in downtown Gary:

1. a “history garden” in Gateway Park, with artifacts from lost historic buildings? Or
2. Signage and pavement decals directing people to downtown art installations

If you have other ideas (sculpture, artistic lighting installations, etc), please share in the comments! Thank you for your input!

 71% History Garden	 29% Signage/Pavement Info
---	---

This poll has ended. 24 Votes

THE DOWNTOWN GARY TACTICAL URBANISM LABORATORY

Model Improvements for the Broadway Corridor

IMPLEMENTATION EFFORTS

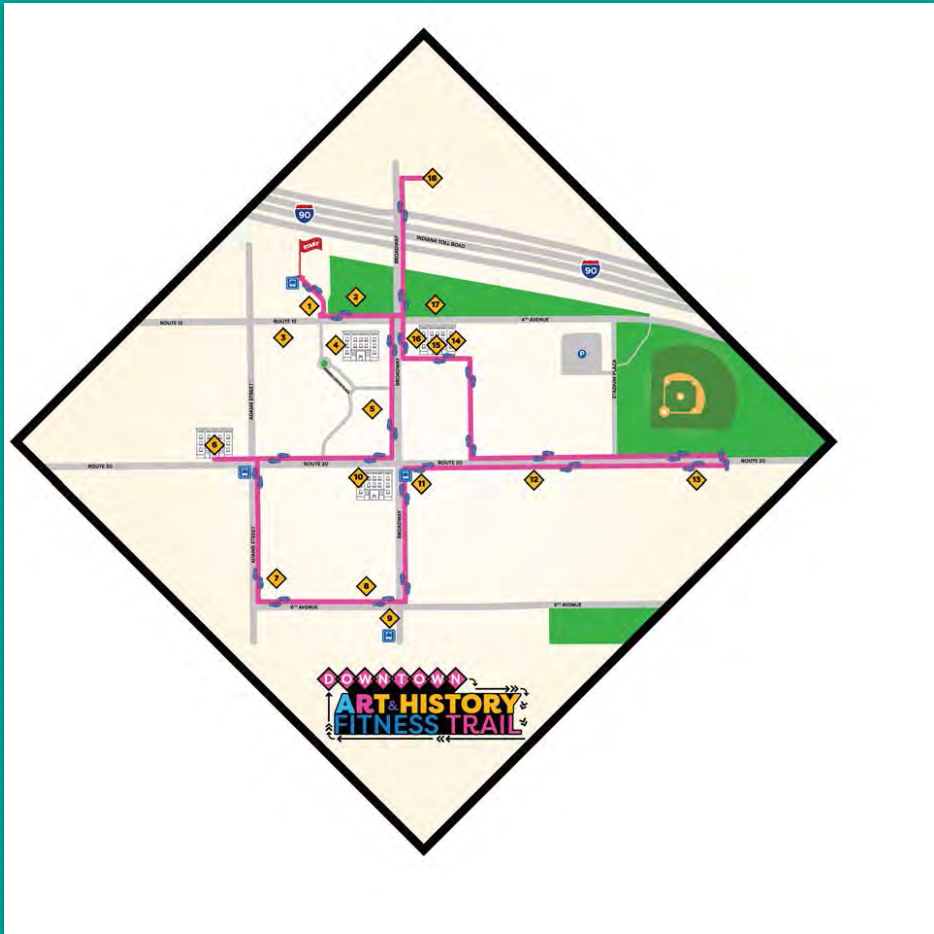
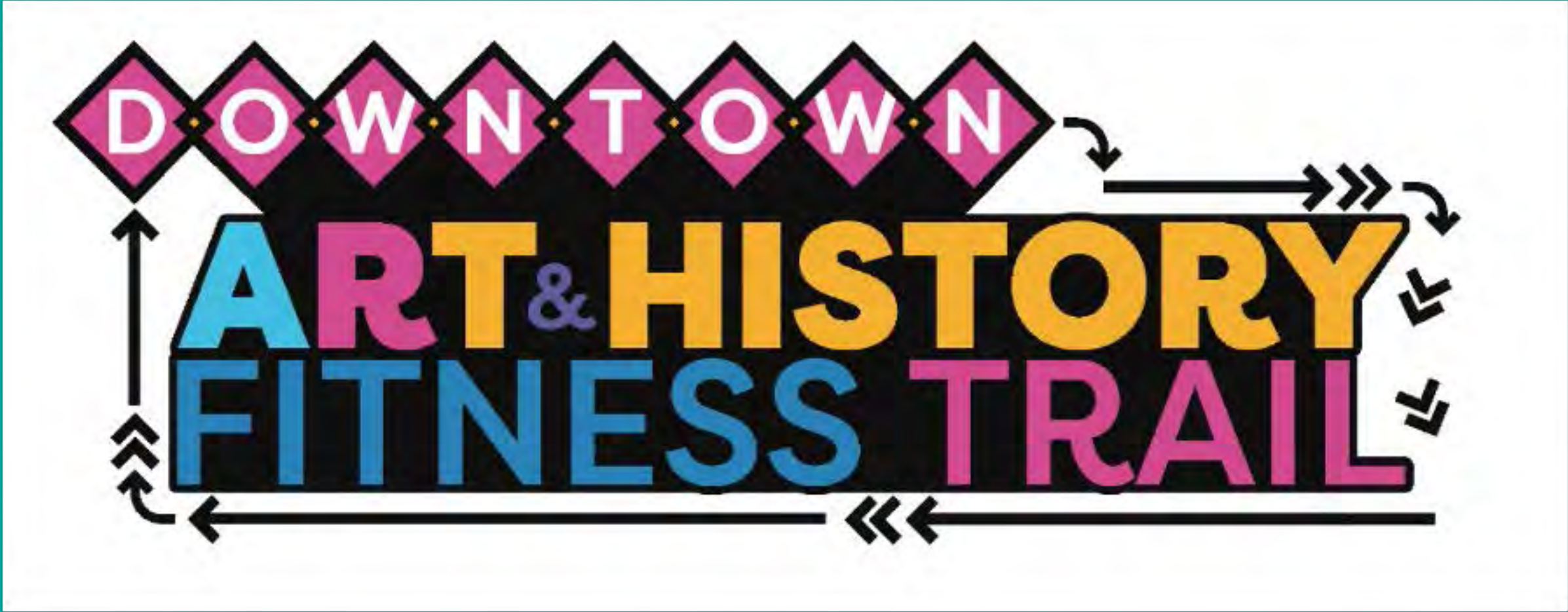
Public Input, Community Partners

- Local health centers
- Gary elementary, middle and high schools
- Gary Public Library
- Decay Devils (urban exploration and preservation)
- City of Gary Youth Employment Initiative
- Purdue Northwest School of Nursing, senior capstone project



THE DOWNTOWN GARY TACTICAL URBANISM LABORATORY

Model Improvements for the Broadway Corridor

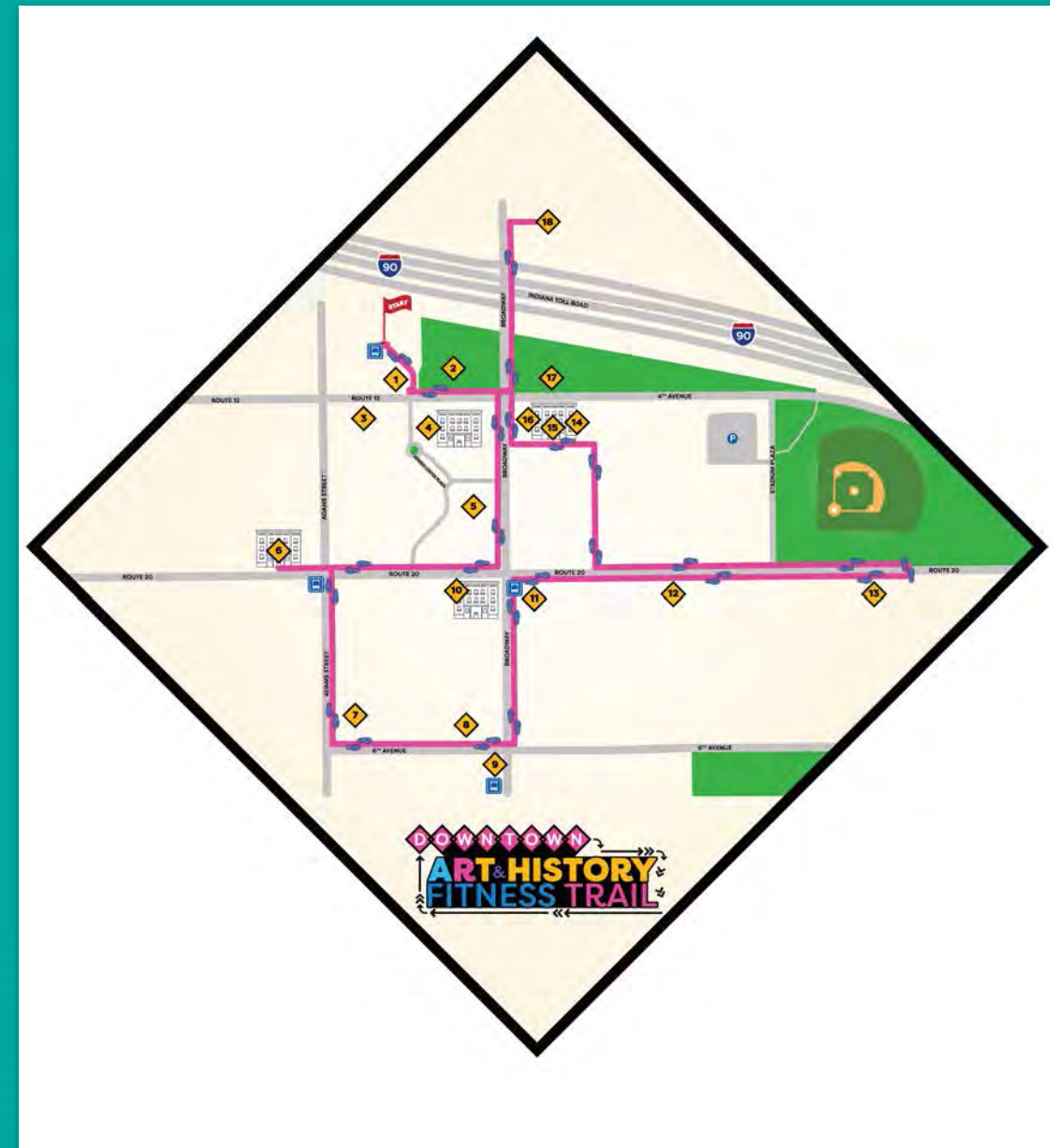


THE DOWNTOWN GARY TACTICAL URBANISM LABORATORY

Model Improvements for the Broadway Corridor

TRAIL FACTS

- 1.6 miles, but can easily access it from any point
- Includes murals, sculpture and historic sites. This allowed for more potential partners in project



LEGEND

- | | |
|--|---|
| 1-4: View Richard Hunt Sculptures inside and outside of the building, parking garage murals and Lake County Courthouse architecture | 12: Dalton Arms architecture |
| 5: The Fusion in Genesis Plaza | 13: <i>Light Lab</i> art installation on Arthouse: A Social Kitchen Building |
| 6: Gary Public Library interior art | 14: Mayor Richard G. Hatcher statue |
| 7: Christ Episcopal Church architecture | 15: Gary City Hall Building architecture |
| 8: City Methodist Church architecture | 16: Elbert H. Gary statue |
| 9: Genesis Towers architecture | 17: Gateway Park for Historic Landmark Gary Land Company Building |
| 10: Gary State Bank architecture | 18: Union Station |
| 11: <i>Lake Wind Sand Composition</i> | |



GPTCBUS.COM/ARTHISTORYFITNESSTRAIL/

THE DOWNTOWN GARY TACTICAL URBANISM LABORATORY

Model Improvements for the Broadway Corridor

TRAIL FACTS

- Signage at each site has QR code to website with more info and to track usage
- Project is ongoing – new partners and new opportunities for promotion abound, and sites are being improved along trail



THE DOWNTOWN GARY TACTICAL URBANISM LABORATORY

Model Improvements for the Broadway Corridor

IMPACTS AND LEGACY

- Part of investment in active living in downtown Gary:
- Crosswalk and street art across town
- New investment
- Bikeshare
- New phases?



THE DOWNTOWN GARY TACTICAL URBANISM LABORATORY

Model Improvements for the Broadway Corridor

YOUTH SERVICES SITE VISIT

Students, volunteers and staff were given an overview of the sites along the Trail that would be seen. Students were moderately interested, but once on the Trail and being able to take in the sites, using all of their senses, true excitement and enthusiasm! Along with a desire to learn more.



**THE DOWNTOWN GARY
TACTICAL URBANISM
LABORATORY**
Model Improvements for the Broadway Corridor

www.GaryTransit.com

David Wright: planningmanager@gptcbus.com

Erin Sherrow-Hayse: esherrow@purdue.edu