

INDIANA PRESERVATION

JANUARY/FEBRUARY 2026



INDIANA LANDMARKS

*Thank you
for your
support!*

Annual Report

Building on Success

THIS PAST YEAR, INDIANA LANDMARKS celebrated 65 years of doing what we love, and we are just getting started. We awarded \$3.3 million in grants across Indiana, helping communities restore the buildings that define their towns, plan for their futures, and tell the stories that make their places unique. Our staff hit the road, visiting hundreds of towns and cities around the state, offering hands-on expertise to save landmarks and reimagine their possibilities.

As we look toward 2026, we are excited to build on these successes and to push the boundaries for what preservation can mean. We are embracing placemaking as a tool to help local leaders harness the power of historic places to address community needs. We are investing in the people who do this work, from do-it-yourself enthusiasts learning essential crafts to the next generation of skilled tradespeople. We will champion federal, state, and local-level advocacy to push for policies, programs, and funding that make preservation and smart growth possible.

We know our work isn't defined solely by the saves or losses of buildings, by the intangibles of recording our heritage, or even by the revitalization of a community. Our legacy rests on building a lasting culture that values and protects these places for generations to come. This is our most critical responsibility—to carry it forward. To take what has been entrusted to us and pass it on in better shape than we found it.

Consider this a call to action and ask yourself, what part will I play in the future of this organization? You are essential to our success.

—Brad Ward, President & Hilary Barnes, Board Chair



On the Cover

Erin and Matt Uber have been rehabilitating the pre-Civil War Wilkinson-Hull House in Carmel since buying it from Indiana Landmarks in 2024. In 2025, they worked with us and the Carmel Historic Preservation Commission to protect the property by designating it a local historic landmark. IBJ PHOTO/CHAD WILLIAMS



BOARD OF DIRECTORS

OFFICERS

- Hon. Randall T. Shepard
Honorary Chair

Hilary Barnes
Chair

Gregory S. Fehribach
Past Chair

Doris Anne Sadler
Past Chair

Emily J. Harrison
Vice Chair

Brad Ward
President
- Brett D. McKamey
Treasurer

Cheri Dick
Secretary

Thomas H. Engle
Assistant Secretary

Marsh Davis
President Emeritus

Judy A. O'Bannon
Secretary Emerita

DIRECTORS

- Tyrell Anderson
Gary

Sarah Evans Barker
Morgantown

The Rt. Rev. Jennifer Baskerville-Burrows
Indianapolis

Bruce W. Buchanan
Indianapolis

A'Lelia Bundles
Washington, D.C.

Joshua A. Claybourn
Evansville

Mike Corbett
Noblesville

Ellen Swisher Crabb
Indianapolis

Noah Davey
Mishawaka

Olon F. Dotson
Muncie

Regina L. Emberton
South Bend

Tracy Haddad
Columbus

Abigail Hohmann
Indianapolis
- Jim King
Cambridge City

Susan Mendenhall
Fort Wayne

Shelby Moravec
LaPorte

Ralph Nowak
Indianapolis

Ray Ontko
Richmond

David A. Resnick, CPA
Carmel

Charles T. Richardson
Indianapolis

Bruce Rippe
Batesville

Peter J. Sacopulos
Terre Haute

Charlie Shook
Lafayette

Kert Toler
Indianapolis

Charlitta Winston
Indianapolis

Beau F. Zoeller
Henryville

OFFICES & HISTORIC SITES

- Headquarters**
Indiana Landmarks Center
1201 Central Avenue
Indianapolis, IN 46202
info@indianalandmarks.org
(317) 639-4534
(800) 450-4534

Morris-Butler House
Indianapolis
(317) 639-4534

Veraestau
Aurora
(812) 926-0983

French Lick & West Baden Springs tours
(812) 936-5870

Central Regional Office
Indianapolis
(317) 639-4534

Eastern Regional Office
Richmond
(765) 478-3172
- Northern Regional Office**
South Bend
(574) 232-4534

Northeast Field Office
Wabash
(800) 450-4534

Northwest Field Office
Valparaiso
(219) 947-2657

Southern Regional Office
New Albany
(812) 284-4534

Southeast Field Office
Aurora
(812) 926-0983

Southwest Field Office
Evansville
(812) 423-2988

Western Regional Office
Terre Haute
(812) 232-4534

©2026, Indiana Landmarks; ISSN#: 0737-8602
Indiana Landmarks publishes *Indiana Preservation* bimonthly for members. To join and learn other membership benefits, visit indianalandmarks.org or contact memberships@indianalandmarks.org, 317-639-4534 or 800-450-4534. To offer suggestions for *Indiana Preservation*, contact editor@indianalandmarks.org.

STARTERS

First Glass

IN NOVEMBER, workers installed windows in the House of Tomorrow in Indiana Dunes National Park, marking the first time since 1935 that “America’s First Glass House” reclaimed the signature feature that captivated the public when the house debuted at Chicago’s Century of Progress World’s Fair in 1933. With exterior restoration expected to wrap up in 2026, we’re planning a celebration of the iconic home’s comeback at this year’s Rescue Party on April 25 in Indianapolis. Watch for more details in future issues of *Indiana Preservation* and on our website indianalandmarks.org.

AMAZING SPACE

In 2025, the exterior of the 1880 Lebanon AME Church underwent an amazing transformation as owners Kevin and Missy Krulik continued work at one of Boone County’s oldest surviving Black landmarks. After the site ceased operating as the local AME church in the 1960s, subsequent owners incorporated vinyl siding and a mobile home addition, alterations that obscured the building’s historic significance.

The Kruliks have been rehabilitating the former AME church since May 2024 using an 1898 photo to guide the exterior back to its historic appearance. With more work planned inside, the project will help ensure the former church remains to tell the story of Boone County’s African American history. The project received a 2025 grant from the Standiford H. Cox Fund administered by the Central Indiana Community Foundation and Indiana Landmarks.

Since 2020, the Standiford H. Cox Fund has helped support more than 74 projects across Indiana, awarding over \$1 million to preserve significant African American historic sites, showcasing the broad impact of visionary philanthropy and dedication of local partners.



PHOTOS BY M. KRULIK



Stepping in to Make the Save

IN OUR WORK TO SAFEGUARD INDIANA'S heritage, Indiana Landmarks sometimes acquires historic properties, through purchase or donation, stepping in at a critical moment to save threatened buildings and make necessary repairs before selling them to owners who can complete the restoration.

In Terre Haute, former Fire Station No. 9 on South 8th Street served as a fire museum in recent years, but deferred maintenance left it in perilous condition. When the building's upper façade collapsed in November 2024, Indiana Landmarks was able to immediately mobilize stabilization efforts thanks to a donation agreement already in place with the City of Terre Haute. With financial support from the City, we've completed repair and reconstruction of the upper façade, with plans to offer the station for sale when work is complete.

New Albany's 1888 William and Ellen Brewer House had been vacant for over two decades when we acquired it in 2021. Seeing potential beneath the shabby exterior, we removed asbestos siding to reveal original details, repaired wood trim and siding, and applied a new exterior paint scheme to bring back the house's Queen Anne charm. This year, we found the perfect buyer in local contractor Chad Steel, who previously worked with us to rehabilitate another Indiana Landmarks project—the Wilkins House in Campbellsburg, which is currently for sale for \$300,000.

When Terre Haute's former Fire Station No. 9 (above) was in jeopardy, the City asked Indiana Landmarks to help save the historic building. We recently completed repair and reconstruction of the upper façade and will soon offer the building for sale. We made similar timely interventions in New Albany and South Bend, where we saved historic houses before putting them in the hands of preservation-minded buyers.

PHOTOS BY TOMMY KLECKNER

In 2025, Indiana Landmarks sold South Bend's 1929 May House to Donald and Andrea Doan and their family, marking the end of a decade-long journey to save the property. Located in a corner of a hospital parking lot, the house was the last one standing in a former residential area. Indiana Landmarks initiated discussions with owner Beacon Health System about the property's future. Beacon Health donated the building to Indiana Landmarks and helped pay to move it to a site we secured in the Chapin Park Historic District, an event that drew cheering crowds along city sidewalks. We stabilized the home and set it on a new foundation before offering it for sale.

Last year, Indiana Landmarks also sold two historic properties in Wabash, attaching our covenants to ensure their long-term preservation. You can find current properties for sale at indianalandmarks.org/properties-for-sale.

Partnering to Protect

For people who spend money, time, and labor rehabilitating a historic property, preservation easements are a way to protect their effort and investment. In 2025, Indiana Landmarks received easements to protect a rural church in Angola and a grand house in Indianapolis.

Walking through the door of the Powers Church in northeast Indiana feels like stepping back in time, as the building's simple white frame exterior gives way to a remarkably preserved interior with aged wooden pews, gas lights, and wood-burning stoves. Without modern electrical, heating, or cooling systems, the church remains as it was built in 1876 by the Powers family as a place to hold funerals before burials in the adjoining family cemetery. Descendant Dewey Powers and his wife, Marcia, became more involved in maintaining the site in the 1970s. The couple formed a nonprofit organization to raise money for the church's preservation, securing grants and donations to restore the steeple and bell tower, shore up the foundation, fix sagging floor joists, and restore the original wallpaper.

To protect their labor of love, the Powers donated an easement on the



Indiana Landmarks received easements on two historic properties in 2025: Indianapolis's 1920 Thompson House (above) and Angola's Powers Church (below). In both cases, the owners wanted to protect the landmarks' outstanding architectural features, inside and out, including Rookwood tile in the house, which previously served as the Indiana governor's mansion, and historic pews, gas lights, and stoves in the church.

PHOTOS BY MARK DOLLASE AND TODD ZEIGER

property to Indiana Landmarks. "We know our time to be caretakers for the church is limited," says Dewey. "We wanted to ensure going forward that all the work we had done would not be in vain."

In Indianapolis, Dr. John and Elaine Klein donated an easement on their family home on Meridian Street. Built for Stutz Motor Car Company President William Thompson in 1920, the Georgian Revival-style landmark served as the Indiana governor's mansion from 1945 to 1970. The Kleins purchased it in 1978 and since then have invested in restoring the house's original character. Their easement protects the notable exterior and outstanding interior fixtures, including four jaw-dropping bathrooms with original Rookwood tile. "Having served on the Meridian Street Preservation Commission, I've seen too many times where people moved into these homes and destroyed their wonderful architectural features, and I wanted to prevent that from happening here," says Dr. John Klein. Look for more on the Kleins' restoration journey in an upcoming issue of *Indiana Preservation*.



Shining a Spotlight

TO IDENTIFY, SAVE, AND celebrate historic African American places around the state, Indiana Landmarks Black Heritage Preservation Program employs a variety of tools, including supporting preservation of still-standing sites through grants, advocacy, and technical advice; raising the profile of Black history through talks and tours; and awarding scholarships and internships to educate future leaders in the preservation field.

In the fiscal year ending August 31, 2025, Indiana Landmarks Black Heritage Preservation program awarded grants totaling \$300,682 to help explore adaptive reuses, aid repairs, prepare National Register nominations, and create educational resources for historic African American places.

The program furthered advocacy for Gary's vacant Theodore Roosevelt



Indiana Landmarks Black Heritage Preservation Program awards grants to fuel restoration of African American historic sites and aids research and programming that highlights Black history, including an annual Juneteenth event (below). In 2025, the program supported installation of a historical marker spotlighting Gary's St. Augustine Episcopal Church.

PHOTOS BY TYRELL ANDERSON, DECAY DEVILS AND WILDSTYLE DAPRODUCER

High School, partnering with the school's alumni association to sponsor a public session drawing a crowd of approximately 100 people to discuss how best to repurpose the vacant building. Indiana Landmarks Black Heritage Preservation Program also coordinated two clean-outs at the school, removing debris and collecting archival materials from the 1930 landmark, one of only three high schools in Indiana constructed exclusively for Black students.

In 2025, the program used grants and public information sessions to support nomination efforts for significant Black heritage sites to the National Register of Historic Places, including Indianapolis's Martindale neighborhood, a historic Black neighborhood dating to the 1870s; Indianapolis's 1916 St. John Missionary Baptist Church; and the Lost Creek Rural Historic District in Vigo County, which includes landmarks tied to one of the state's earliest settlements of free people of color. If approved, the designations will make the communities eligible for tax incentives and grants for preservation.

The Black Heritage Preservation Program also continued its work collecting historical records and stories at oral history events statewide, recording interviews with Black elders whose memories will be shared through a new oral history collection in the Indiana Memory database operated by the Indiana State Library. In 2026, the program will launch two new public walking tours spotlighting existing landmarks and lost heritage in South Bend and along Indianapolis's Indiana Avenue. It will also host an event in honor of Juneteenth and continue partnering with Freetown Village on talks spotlighting Black heritage.

"We continue to work to preserve Indiana's Black history and raise awareness of places integral to our story," says Eunice Trotter, director of Indiana Landmarks Black Heritage Preservation Program.



Answering the Call

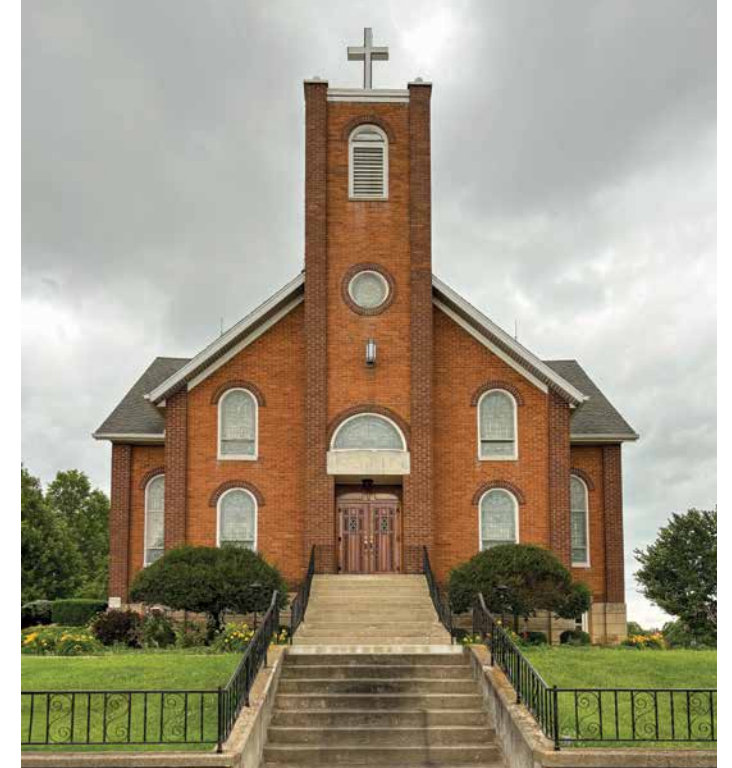
HISTORIC CHURCHES CARRY generations of community goodwill as sites of artistic inspiration and social support. But they can also present a challenge to the congregations that steward them, who face unique building maintenance needs, rising construction costs, and a shrinking number of skilled tradespeople to undertake repairs. Indiana Landmarks' Sacred Places Indiana program provides essential help to such congregations through education, fundraising training, advocacy, and financial support. Since the program's launch in collaboration with Lilly Endowment Inc. in 2015, Sacred Places Indiana has served 110 congregations representing 26 denominations across 45 counties.

Sacred Places' *New Dollars/New Partners* program provides a starting point by offering congregations technical expertise, training, and grants to support them as they raise money and prioritize repairs. In 2025, St. Paul Lutheran Church in Olean used lessons from the training program and a \$21,267 planning grant to identify needed repairs at the congregation's 1921 Romanesque Revival-style church building. The experience laid the groundwork for the church to later receive a \$100,000 capital grant from Indiana Landmarks' Sacred Places Indiana Fund for masonry and bell tower repairs. The critical funding will help the historic building continue to serve its rural community in southeast Indiana, where it provides 24-hour community access as a storm shelter and a centralized distribution point for Ripley County emergency services.

In Mishawaka, St. Joseph Catholic Parish built in 1891 remains the tallest

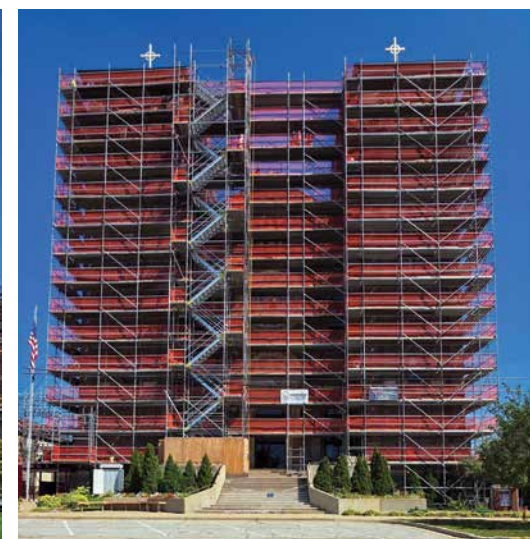
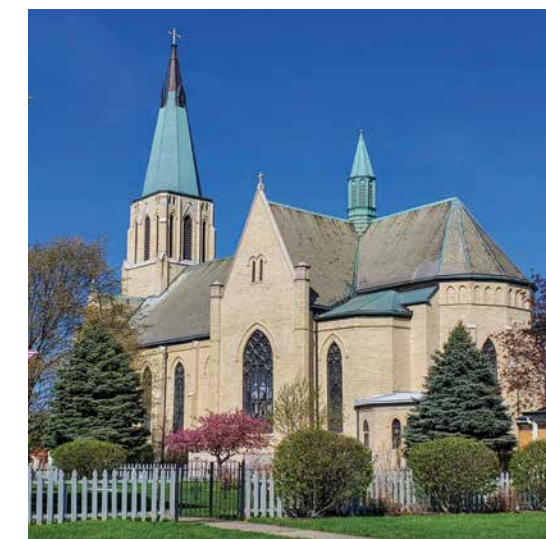
Sacred Places Indiana serves as an invaluable resource to congregations with historic houses of worship by providing training, advocacy, and grants to help them steward their landmark buildings. Grants from the program are helping with masonry and tower repairs at the 1921 St. Paul Lutheran Church in Olean (above) and replacing the original slate roof at St. Joseph Catholic Parish in Mishawaka (below).

PHOTOS BY MITCHELL KNIGGA, DAVID FREDERICK, AND TODD ZEIGER



building in downtown, where the Gothic Revival-style church occupies an entire city block. Home to a thriving congregation, the church hosts nearly 1,200 people weekly for Mass and supports a variety of community outreach programs, including offering food assistance, utility and rent help, and services for unhoused people through its chapter of the St. Vincent de Paul Society. The congregation used a \$25,000 planning grant for a fundraising feasibility study and a \$400,000 capital grant from the Sacred Places Indiana Fund to replace the building's nearly 130 year-old original slate roof.

In the fiscal year ending August 31, 2025, Indiana Landmarks' Sacred Places Indiana program awarded \$2.9 million in planning and capital grants to 31 congregations statewide to address needs at their historic houses of worship. To learn more about the Sacred Places Indiana program, visit indianalandmarks.org/sacred-places-indiana.





Annual Support

Gifts from Indiana Landmarks’ members and supporters fuel our work to leverage preservation as a catalyst for revitalization and enable us to act quickly when historic places are threatened. The following list reflects contributions above the level of individual and dual membership given between September 1, 2024, and August 31, 2025, but please know we are grateful for the support of each and every member. Want to join our list of donors? Contact Indiana Landmarks’ Development Department, development@indianalandmarks.org.

Indiana Landmarks maintains Veraestau (above), a historic estate on the Ohio River, to serve as a base of operations for our preservation work in the region and as a venue for weddings, talks, and other events. In 2025, the property proved a picturesque point to observe the northern lights.
PHOTO BY KAYLA KNIGGA

INDIVIDUALS

\$50,000+

Mrs. Judy A. O’Bannon
Dr. George F. Rapp*
Sallie W. Rowland*
Mr. and Mrs. Turner Woodard

\$25,000-\$49,000

Mrs. Jane H. Houck
The McGuire Family
Jane T. Walker

\$10,000-\$24,999

Anonymous
Elaine and Eric Bedel
Randy and Janet Belden
Mr. Tag Birge
Mr. and Mrs. Charles H. Boxman
Cheri and Rollie Dick
Mr. and Mrs. Daniel H. Ford
Mrs. Barbara J. Goddard
Tracy L. Haddad
Rick L. and Vicki L. James
Dr. and Mrs. John C. Klein
Dr. and Mrs. John C. Lechleiter
Thomas R. Mote, M.D.
Mr. Ralph G. Nowak
Mr. Kenneth Remenschneider and Dr. Sharon Hoog
Mrs. Jean Richcreek*
L. Gene Tanner

\$5,000-\$9,999

Trudy Banta
Hilary and Travis Barnes
Mrs. Linnea Bartling and Mr. George Bartling*
Jan M. Carroll and John Daniel Tinder
Ms. Karen Christensen
Ms. Sara Edgerton
Edward Frazier
Col. Phillip J. Gick and Mrs. Susan C. Gick
Melissa and Scott Glaze
Dave and Sandy Haist
Mr. and Mrs. Carl Harcourt
Ms. Donna S. Johnson

Kim McNair Lawless and Timothy Lawless
Bill and Cynthia Longest
Ms. Nancy McMillan
Mr. Claude Powers
Martin and Maribeth Rahe
Charles T. Richardson
Mr. and Mrs. Eric Rowland
Mr. and Mrs. Robert Sewall
Tim and Meg Shelly
Dr. Lucia Spears and Mr. Jay M. Smith

\$2,500-\$4,999

Jean A. Allan
Elizabeth Ann Beck
Bruce and Julie Buchanan
Linda Christian Davis*
Timothy DeBruicker and Cheri Jones DeBruicker
Greg and Mary Beth Fehribach
Mark and Amy Ford
Steve and Lisa Ford
Marcia Hughes
Paul and Barbara Jablonski
Kurt Janowsky and Jory Fitzgerald
Mr. and Mrs. Duane Johnson
Mr. Larry Landis and Mrs. Carol Landis*
Ellen W. Lee and Stephen J. Dutton
Jim and Sara Lootens
Ruth Ann and Bob Loser
Constance and Terry Marbach
Brett D. and Judi L. McKamey
Ms. Dian Moore
John and Marian Oberholtzer
Mr. Alan R. Pyle
David and Miriam Resnick
Mrs. Betty Richardson and Mr. Kent Richardson
Mr. and Mrs. Richard O. Ristine, Jr.
Mrs. Anne E. Scheele
The Hon. Randall T. Shepard and Ms. Amy W. MacDonell
Mr. and Mrs. Bradley J. Warnecke
Charlitta and Robin Winston

\$1,000-\$2,499

Tyrell and Candice Anderson
Anonymous
Andrew Appel
Eleanor Arnold
Louise Bakker and Gary Denney
Dr. Ronald A. Barker
The Hon. Sarah Evans Barker and Mr. Kenneth R. Barker
John and Susan Barnard
Mr. John Barry
Frank and Katrina Basile
Rt. Rev. Jennifer Baskerville-Burrows and Mr. Harrison Burrows
William C. and Lisa Kmak Beatty
Tom and Dawn Bennett
Dr. and Mrs. Stewart Bick
Mr. and Mrs. Greg L. Blum
Mr. and Mrs. Drew Boggs
Tiffany Benedict Browne and William Browne, Jr.
Ms. A’Lelia Bundles
Michael and Mary Burger
Cheryl K. Clark
The Hon. and Mrs. Edward D. Clere
The Hon. J. Terrence Cody and Mrs. Peggy Cody-Cody Family LLC
Ms. Tina Connor
Dexter and Rosemary Cooley
Mrs. Ellen Swisher Crabb and Dr. David W. Crabb
Marsh and Grace Davis
Kerry Dinneen and Sam B. Sutphin
Mr. Mark A. Dollase
Dr. Olon F. Dotson and Dr. Susan L. Hall Dotson
Mr. and Mrs. Thomas J. Eggers
Mrs. Becky Engle
Mr. and Mrs. Ronald A. Fritz
Ms. Sharon L. Gamble
M. Ross Gambriel
James A. Glass, Ph.D.
Greg and Pamela Greene
Dr. Tom Greist and Dr. Anne Greist
Ms. Mary S. Harris
Emily and Robert Harrison
Ms. Anita Harvey

Thomas L. and Mary C. Heyob
Abigail Hohmann
Ms. Carrie Houchin
Russell L. Irving and Christopher Conner
Robert W. Jacobi and Freddi Stevens-Jacobi
Chad Kammerling
Ms. Phyllis Karrh
Prof. Dave Kelso
Mr. Thomas Kent and Ms. Mary Caccavo
Marjorie Kienle
Ms. Joy Kleinmaier
Mr. Kevin Krulewitch and Ms. Rosanne Ammirati
Rose Kuntz
Mark Kurth and Shelby Moravec
Donald and Dorothy Kurtz
Paul and Pat Lingle
Carol and John Longfellow
Mr. David B. Lupke
Mr. Harold F. Mailand
Ms. Sally Marker
Todd and Lisa Mattingly
Dr. Doug Maxwell and Mrs. Barbara Maxwell
Matthew and Karissa Mayol
Dr. Sandra McCabe and Mr. David McCabe
Dennis and Anne McCafferty
Mr. Richard E. McKnight
Prof. William L. McNiece
Greg and Sally Micheel
Mr. Clay Miller
Kathryn Miller
Mr. Timothy S. Needler
Sharon and Ray Ontko
Susan R. Porter
Steve and Sharon Reiff
N. Clay and Amy Robbins
Melony and Pete Sacopulos
Mr. and Mrs. Thomas Sands
Eric and Marcia Servaas
Mr. and Mrs. Ralph C. Shive
Mr. Charlie Shook
Rick and Cindy Small
Mr. and Mrs. Steven Snell
Ann M. Stack
Mrs. Nancy M. Steele
Matt and Jennie Stegall
Judith C. Stewart
Jim and Cheryl Strain

Michael and Maureen Surak
Bill and Janet Taylor
Ms. Diane Thompson and Mr. Donald Knebel
Mr. and Mrs. Kert Toler
Mike and Pam Umbaugh
Martha and Santi Vibul
Chris and Madonna Wagner
Ron and Wendy Walker
Brad and Cara Ward
Mr. Michael Wassel
Brian and Karen Weber
Sammi and Joel Weyrauch
Mary Whalin*
Mr. David W. Willkie
Dr. Dawn Zimmer and Mr. William Adams

\$500-\$999

John and Sandy Anderson
Ms. Sherry L. Anderson
Mr. Don Arbogast and Ms. Terri Gill
Dr. Mary Anne Bain and Dr. Jim Bain
Mr. and Mrs. James W. Baker
Mr. and Mrs. Craig Barker
Mr. and Mrs. William Baron
Eric and Margo Black
John and Joan Blew
Bill and Nancy Brandenburg
Mr. and Mrs. Paul Brandenburg
Leslie J. Choitz
Mr. Douglas Church
Rodney and Lynn Clark
Joshua Claybourn and Melissa Cooney-Mudd
Ms. Amanda Cooper and Mr. John Abbott
Donald and Dolly Craft
Larry and Valecia Crisafulli
Mr. and Mrs. Terry Curran
Mr. Jerry Debrosse and Ms. Mary Mader
Debra Denslaw
Mrs. Mary O. DeVoe
Ms. Rosemary Dorsa
Jeremy D. Efroymson
Ms. Lois Einsteadig
Dr. and Mrs. James P. Fadely
Drs. Richard and Rebecca Feldman
Bruce and Marcia Gascho
Debbie and Bob Goldman
Brent and Marti Gutwein
Dr. Susan Haney

Susan and Steve Harris
Kenneth and Carla Rae Haselby
Richard J. Hertel
Mr. Eugene Hintz
Ms. Nancy Hokanson
Mr. Tom Charles Huston
Ms. Jeanine Isham
Mr. Erik Johnson and Ms. Kristie Hill
Kandy Kendall
Mr. and Mrs. Paul K. Knapp
Donald Knebel
Kathryn M. Kunz
Ronald and Cynthia Land
Mrs. Alma T. Lathrop
Mrs. Joan B. Lauer
Ms. Amy M. Levander
Prof. Steve Mannheimer
Mr. Eric A. Manterfield
Ms. Melinda J. Mears
Mr. and Mrs. Matthew M. Melfi
Mr. and Mrs. Derek Merida
Marie and Jeffrey Mooney
Mr. Charles J. Mullen
Mr. and Mrs. John M. Mutz
Cheri and Mark Nichols
Ms. Joanna Nixon
Ed Norman and Tim Parnell
Julie Overbeck
Dr. and Dr. William Penland
Mr. Gary Perkins and Ms. Ginny Dewar
Joy Peters
Sharon Pfister
Philip Pierce and Anthony Schreiber
Tom Quinn
Alan and Deborah Rasper
David and Donna Reinhardt
Dr. James and Rev. Lynn Renne
Mrs. Mary Jane Rice and Mr. Gordon Weinstein
David L. Rimstidt and Susan Williams
Byron and Marsha Robinson
Nancy Ray Ross
Mr. and Mrs. J. Gregory Rust
Mr. Richard Ruwe
Doris Anne and Tim Sadler
Ms. Rita J. Schroll
Ms. Nanette E. Schulte and Mr. Matthew W. Russell
Mr. and Mrs. Jason Shelley
Dr. Ron Small
Mr. Daniel Smith

Mrs. Gretel Smith
Carolyn S. Spitler
Helen Thoele Stalder
Bob and Suzanne Stanis
Rich and Evalyn Steininger
Rosemary Steinmetz, Ph.D.
Carla Striegel-Winner and Jamie Winner
Janet and Jeffrey Stroebel
Diane Thompson
Eunice Trotter
Joe and Diane Vande Bosche
Garnet Vaughan and David Payne
Mr. and Mrs. Scott Weghorst
Dr. and Ms. Joe Wernicke
Debbie and Bob Whitman
MaDonna and Andy Wolf
Dr. Christian Wolf and Ms. Elaine Holden-Wolf
Ms. Janet Wright
John and Cecilia Wyand
Diana and Dan Yates
Ms. Laura S. Yeo
Beau and Melanie Zoeller

\$250-\$499

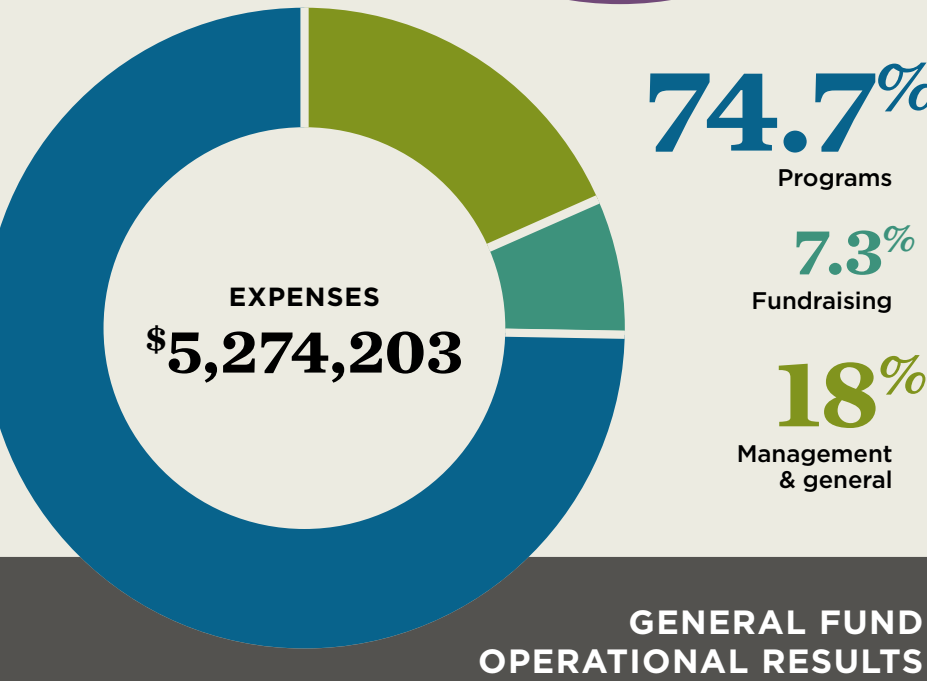
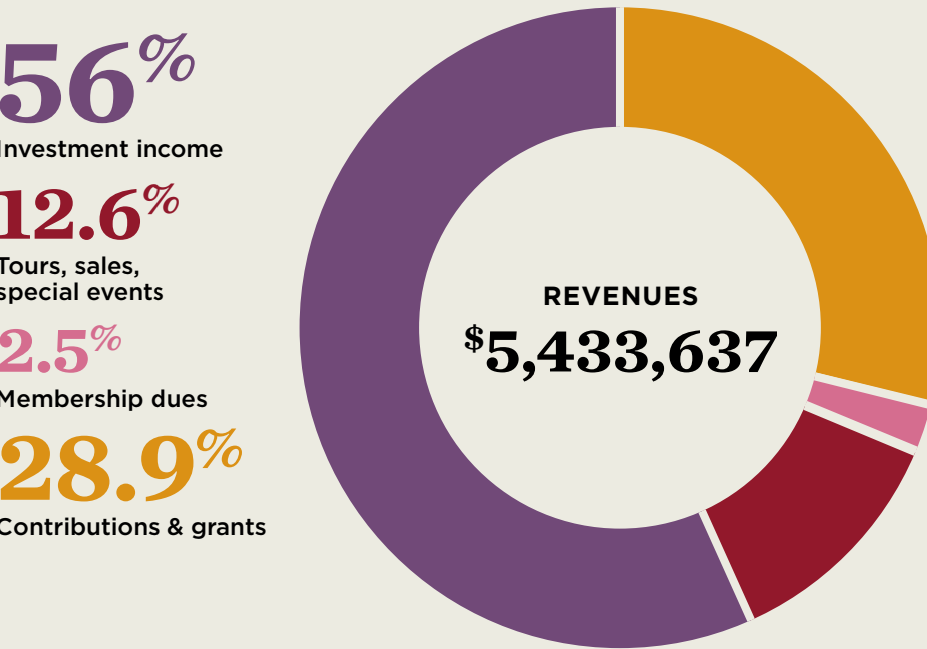
Mr. Mark Ahlemann and Ms. Elizabeth Bottorff Ahlemann
David and Mary Allen
Denise F. Anderson
Scarlet Andrzejczak and Sam Burgess
Mr. and Mrs. Bruce E. Ayers, Jr.
Eleanor Bachmann and Phil Wilmore
Dick and Kathi Badertscher
Mrs. Judy Birge
Dr. Larry C. Blaszczak
Ms. Anne Bowker and Mr. Kurt Diefenbach
Walter and Cynthia Breitinger
Ms. Inga Brissman and Dr. E. Matthew Ritter
Mr. and Mrs. David Butler
Ms. Diane Byrd
Dr. and Mrs. Robert R. Canida
Dale and Jill Coffey
Joe S. and Eleanor Columbe
Dr. Clifford Crawford and Dr. Donna Crawford
Drs. Kelly and Cornelis de Waal
Edward and Judy Deiwert
Mrs. Ann E. Dever
Miss Susan Dickey

2025 Financial Report

In the fiscal year ending August 31, 2025, Indiana Landmarks’ finances continued to strengthen, with our net asset balance increasing from \$132.3 million to \$135.7 million, supported by positive returns on invested endowment assets.

Indiana Landmarks’ staff and board-level finance and investment committees continue to carefully manage the organization’s resources. We limited operational spending for the fiscal year to remain within our budgeted endowment draw and also saw strong philanthropic support. The graphs identify the sources of operational revenue and our use of those funds.

For complete audited financial statements, visit Indiana Landmarks’ website, **indianalandmarks.org**, or contact CFO Madonna Wagner at 800-450-4534.

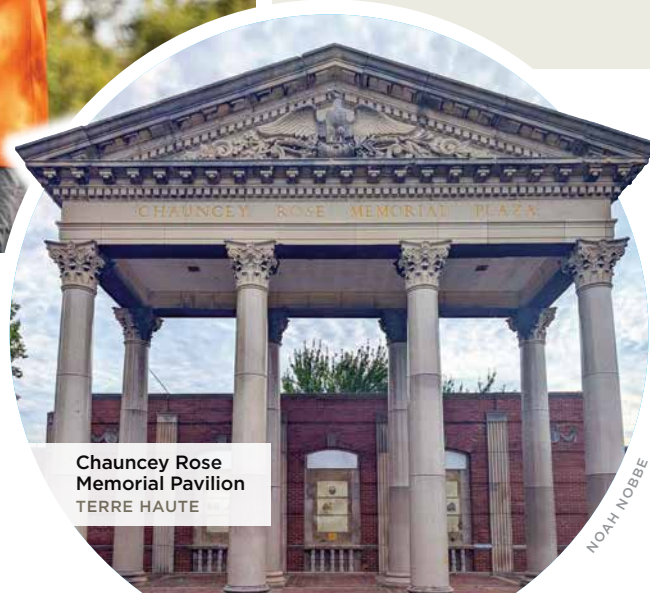


By the Numbers

12,200+
people took tours guided
by Indiana Landmarks

WRSP DEVELOPMENT COMMISSION, ALEC GRAY

65
educational programs drew
7,700
attendees



Chauncey Rose
Memorial Pavilion
TERRE HAUTE

\$3,369,960

awarded in grants by Indiana Landmarks for architectural and structural assessments, reuse studies, building repairs, fundraising planning, educational projects, and other preservation efforts

120+
trades workshop
attendees

6,840

hours contributed by volunteers
leading tours, assisting at
events, gardening, researching,
and providing other essential
assistance to Indiana Landmarks

19

communities contracted with
Indiana Landmarks to manage their
preservation commissions, lending
preservation expertise, developing
design guidelines, and evaluating
renovation plans



202 E. Jefferson
TIPTON

\$475,000

awarded in loans to fuel rehabilitation
of historic buildings in Tipton,
Richmond, and Crawfordsville

21

properties undergoing rehabilitation by Indiana
Landmarks through our Efroymsen Endangered
Places Real Estate Program

4

historic properties
sold to preservation-
minded buyers



Brewer House
NEW ALBANY



GREG SEKULA

63 local preservation affiliates
partnered with Indiana
Landmarks around the state
to help save meaningful places and raise
the alarm when buildings are threatened



NOAH NOBBE



Greencastle's Vandalia-Pennsylvania
Railway Depot move spearheaded
by Heritage Preservation Society of
Putnam County



Guiding the Way

WHEN PEOPLE NEED

guidance on preservation, Indiana Landmarks’ staff are ready to help, offering expertise, collaborating on strategies to protect and save local landmarks, spur community revitalization, and find funds for the work.

Last year, we formally partnered with 19 communities through our Commission Assistance Program to provide professional preservation support, helping craft architectural design guidelines, review grant applications for façade improvements, and aid in creating local historic districts.

In 2025 Indiana Landmarks staff worked with the Carmel Historic Preservation Commission to develop

In 2025, Indiana Landmarks provided professional preservation support to 19 communities through our Commission Assistance Program, offering expertise on design guidelines and downtown revitalization. Through the state’s PreservINg Main Street program, we’ve helped establish preservation commissions in Kendallville (above) and Brookville (below), where matching grants have spurred millions in investment in downtown buildings and inspired others to make additional improvements.
PHOTOS BY TODD ZEIGER AND MITCHELL KNIGGA

preservation plans for two properties designated as local historic sites: the 1913 Klingensmith-Pettiner House and the c.1824/1853/1909 Wilkinson-Hull House (on cover), currently under restoration by the Uber family. A member of Carmel’s preservation commission, Matt Uber supported the local historic district designation for the pre-Civil War home and has coordinated with Indiana Landmarks for advice on its rehabilitation. “I’m proud we’ve designated that in city ordinance,” says Uber, “and not just left it to ‘you can’t destroy it,’ but ‘you’re going to take care of her.’”

As part of our work with the Indiana Office of Community and Rural Affairs’ PreservINg Main Street program, Indiana Landmarks staff advises newly established preservation commissions in Kendallville, Brookville, New Castle, and North Vernon—all participants selected for the state program, which aims to spur revitalization in each community through a three-year, \$2 million matching grant for historic buildings in downtown districts.

Local leaders in PreservINg Main Street’s inaugural communities of Kendallville and Brookville are already seeing the visual and economic ripple effects of the program. In Kendallville, PreservINg Main Street funded eight façade rehabilitations, inspiring an additional 35 property owners to undertake improvements. The City supported the effort with over \$1 million in redevelopment grants paired with \$107,504 in private investment. In Brookville, an initial seven buildings rehabbed with programs funds prompted 11 more building owners to improve their properties and inspired creation of second and third floor apartments.

“Those seven buildings revamped through PreservINg Main Street kickstarted civic pride back into gear,” says Christine Craig, executive director of Main Street Brookville. “Creating pride of place has improved locals’ morale, which in turn makes it a more welcoming place for visitors.”



Dinah C. and David B. Duvall
Quentin and Jessica Emerson
Mr. Ted Ferguson
Mrs. Joan FitzGibbon
David B. Frederick
Dr. and Mrs. George W. Geib
Joe and Diane Giacoletti
Mr. and Mrs. David Gorden
Ms. Portia Graves
Adam and Jennifer Green
Ms. Carol Grimm
Dr. and Mrs. Paul J. Guentert
John and Pam Guthrie
Mr. and Mrs. Phil Gutwein
Chandler and Jingle Igleheart Hagey
Evan and Kathy Hale
Todd and Lori Harris
Marsha Harwell-Gunyon and Randal Gunyon
Jeff and Amy Hayden
Laura Hayden
Barbara Hellyer
Mr. Walt Henry
Dr. Stephen and Susan Henson
Jim and Marsha Hicks
Dr. and Mrs. Joseph N. Hingtgen
Mr. Neil Hottle and Ms. Julie Musgrave
Mr. and Mrs. Richard S. Irish
Mr. Daniel Jares
Larry and Susan Jordan
Mr. Darrell C. Jutte
Mr. and Mrs. J. Scott Keller
Mr. James Kincannon and Mr. Charles Goad
Mr. Tommy Kleckner
Joe and Emily Kniesly
Sherrie and John Knighton
John Krauss and Marnie Maxwell
J. Fritz Kreutzinger and Sharon Brennan
James and Jane Link
Carol and Fred Logan
Mr. Reed Maidenbergl
Greg Malone and Kathryn Kelley
David and Barbara Malson
Mr. and Mrs. J. Richard Marshall
Laurie and Alex Martin
David and Patty Mattingly
Tom and Sarah Maxwell
Frank and Marcia McCracken
Constance and Martin Merkel
Bonnie Dee Merritt

John and Sharon Moe
Bonnie H. Muir
Kevin Murray
Miss Donna Jeanne Myer
Jerry and Joanne Myers
Mr. and Mrs. Fred J. Nation
Ms. Andrea Neal
Theresa M. Neumann
Jackie Nytes
Dr. Mary Ellen O’Connell and Mr. Peter Bauer
Philip and Cynthia Ohlrogge
Ms. Penny Ortega
Mr. and Mrs. Milton Otto
Mrs. Jean Patton and Mr. Ray Gotshall
Mr. and Mrs. Gregory Pemberton
Andrew Potts and Steve Clark
Mr. Robert L. Ralston
Judy Rechberger
Mrs. Stephanie Richard
Mr. Timothy Riffle
Tim and Linda Robb
Mr. David Rodgers
Mr. and Mrs. Gregory A. Roe
Ms. Sherri Roizen
Mr. and Mrs. Phil Rush
Dr. Larry Ryan and Ms. Janice Jordan
Karl and Mary Scharnberg
John Scherschel and Catherine Meeker Scherschel
Warren and Jill Schimpff
Dr. Thomas Schmitz and Dr. Norma Schmitz
Mrs. Linda Schooler
Mr. Robert E. Schweitzer
Mr. John A. Seest
Elizabeth and Philip Smith
James D. Smith and Sherry Nagel-Smith
Lee Ann Smith and Mark C. Webb
William and Margaret Smith
Wendy Stanton-Haines and David Haines
Peter Steele
Martha and Timothy Sullivan
Michele and Nathan Sulwer
Dr. Marcia Suvelza and Mr. Roger Borkowski
Mr. John (Daveed) Thomas
Kerby and Sabine Thomas
Mr. and Mrs. Dwight Thompson
Miss Tiffany Tolbert
Mr. and Mrs. Michael Townsley

Ella Tunnell and Ralph Brandt
Mr. and Mrs. Lawrence VanArendonk
Richard and Lynda Vance
Lorraine and Rick Vavul
Mr. Alan Vieck and Mrs. Jean Vieck
Ms. Susan Vinicor
Jim and Joan Voyles
Tom O. Vujovich and Christine M. Vujovich
Mr. Scott Franzen and Mrs. Ellen Waite-Franzen
Ms. Babs Waldrop
Mr. Douglas Walker
Mr. and Mrs. James Walker
Paige Wassel
Christopher Watts and Mary Hampo
Mr. C. Mark Wetzel
Drew White and Patty Clark
Dr. and Mrs. James M. Williams
Mick and Jenny Wilz
Ms. Mindi Woolman and Mr. Andre Madar
Mr. Frank Wright
Mr. and Mrs. Warner A. Young
Todd and Terry Zeiger
Paul L. and Marilyn W. Ziemer
Daryl and Gretchen Zimmer
Dominic and Kasey Zronek

UP TO \$249

Thomas Abeel and Linda Gilkerson
Mr. Scott Alber and Ms. Barbara Hatton
Steve and Jennifer Albrecht
Eric and Catherine Allen
Cris and Craig Anderson
Mr. and Mrs. Robert T. Anger, Jr.
Ms. Susan Armeny
Ms. Judith C. Arnold
Alan Ash
Mr. Tim Ashley
Ken and Kim Ausenbaugh
Sandra and Terry Ave
Mr. Daniel Axler
Donna S. Ayer
Mrs. Danielle Bachant-Bell and Mr. Michael Bell
Mr. Aaron Bailey
Mr. David Baker and Ms. Elizabeth Riley-Baker
Tony and Teresa Baker
Mr. and Mrs. Kenneth Bandy
Ms. Nicole Barker

Mr. and Mrs. David C. Barksdale
Mr. and Mrs. Robert L. Barlow, II
Mr. Heath Barmes
Mr. and Mrs. D. Wayne Barnett
Dr. Ramon L. and Mrs. Dountonia S. Batts
Mr. Stephen A. Batzka
Mr. Joseph P. Bauer
Jeff and Melissa Baxter
Virginia and Dalton Baysden
Joe Tesoriero and Hilary Beall
Ms. Gail Beck
Lynette Beckham
Mr. Marvin Beeker
Bryan and Linda Beeler
Mr. Jeff Been and Mr. Eric Graninger
Shirley and Andrew Beetz
Suzanne Bellamy
Ms. Ann G. Benthin
Theresa and Dave Berghoff
Kathleen Berry Graham
Virgil and Diane Billiard

Mrs. Janet Bischoff
Ms. Carla S. Black
Mrs. and Mr. Lisa Black
Mr. and Mrs. Jeffrey Blair
Ms. Sidney A. Blanchet
Paul and Lora Blaylock
Mr. Scott G. Bocock
Mr. Donald P. Bogard
Bruce BonDurant
Ms. Mary Bookwalter and Mr. Jeffrey Stant
Maxine Bough
Mr. James Bourne
Ms. Becky Bowman
Mrs. Patricia Kay Bradshaw
Les Brandt
Susan and George Brattain
Mr. Lon R. Braun and Mr. Gary L. King
Mrs. Merna Brenner
Mr. Brent D. Brinkley
Mr. Larry Bristow
Mr. Alex Brooks
Mary Ann Brookshire and Linda Zeigler
Kate Doyle Brown
Mr. Norman K. Brown
Ms. Patricia Ann Brown
Melissa Browning
Mr. David Buchanan
Dr. and Mrs. John E. Buhler, Jr.
Mr. Robert Burns



In June 2025, a crowd celebrated rededication of the 1854 Cades Mill Covered Bridge in Fountain County, a prior entry on Indiana Landmarks’ 10 Most Endangered list. Members of the Fountain County Art Council worked tirelessly to save and rehabilitate the span, including raising \$575,000 over five years, an impressive feat that won Indiana Landmarks’ Sandi Servaas Memorial Award. PHOTO BY TOMMY KLECKNER

Mr. Richard Butler and Dr. Jamie Street
Mr. and Mrs. Robert Butler
Mr. and Mrs. Malcolm Cairns
Barrett and Victoria Calhoon
Mr. and Mrs. Max Califar
Duncan Campbell and Cathy Spiaggia
Jeana L. Campbell
Mrs. Johneva Campbell
Ms. Wanda Campbell
Mary Jean Cannell
Robert and Diana Carithers
Ms. LaChelle Carter
Sandra Carter
Mr. Thomas E. Castaldi
Mrs. Joyce E. Chambers
John and Kathryn Chandler
Ms. Amber Chellis-Omedo
Erica J. Christianson
Mr. Chan Chua
Mr. Curt Churchman
Mrs. Deborah Clark
Mrs. Patricia A. Clements
Mrs. Katherine Clevenger
Mr. and Mrs. John R. Colby, II
Bill and Judy Coleman
Franklin Conaway
Margaret and William Connolly
David and Julie Cook

Dave and Carrie Copenhaver
Mr. and Mrs. Mike Corbett
Charles Corbin and Mary Kummings
Terry and Brenda Cornwell
Matthew and Anne Costello
Norma and Carl Crabiel
Stephen M. Cranfill and Andrea Farmer
Tom and Diana Creasser
Betsy and Casey Cronin
James Crouse and Jane Porter Gresham
Ms. Julie Crow
The Hon. and Mrs. W. Timothy Crowley
Mr. Stan Cuppy
Mrs. Carolyn Curry and Mr. James Curry
Ms. Louise Dallenbach
Mr. Ronald Darrah and Ms. Wanda Hartley
Dr. James Daubs
Ms. Laura A. Day and Mr. Richard Marshall
Ray Day
Martin De Julia
Martin and Myrna DeAgostino
Natalie and Anthony Derrickson
Ms. Ann Dettwiler
Mrs. Patricia A. Devlin
Patty and Dennis Dewey
Ms. Cindy Page DiBiase
Dr. and Mrs. William H. Dick

Mrs. Ruth A. Dietel
Gail Dodge and Gregory Fuchs
Mr. and Mrs. Neill R. Doherty
Edward and Vera Dollase
Mayor and Mrs. William Dory, Jr.
David and Wilma Doup
Jill and Andrew Downs
Joan Downs, Ph.D.
Richard and Helen Downton
Mr. and Mrs. Scott Drake
Cecily Dresser
Greg and Hui Lin Dugan
Dr. and Mrs. M. Tim Dunfee
Andrew R. Durkin
Randa Duvick and David Grosnick
Mr. and Mrs. Paul J. Eakin
Sally and Ned Edington
Mrs. Judith Egolf
Dr. and Mrs. Lawrence Einhorn
Ms. Tara Elliott
Mr. and Mrs. Thomas S. Elliott
Drs. Jeffrey and Susan Emmick
Andrew Engel
Ms. Gwendolyn England
Ms. Amanda Engle
Mr. Michael Engledow
Mrs. Alice Ernst
John and Lori Evanich
Ms. Judy Feichter
Glenda Ferguson
Mr. and Mrs. Stephen L. Ferguson
Mr. Adrian Scott Fine
Jerry and Jill Finn
Mr. and Mrs. John D. Foell
Dr. and Mrs. Norman Fogle
Lynn and Thomas Folkers
Mr. and Mrs. David Fox
Judith and Richard Francis
Mr. and Mrs. Michael Frantz
Eric W. and Jan Fredbeck
Drs. Kim and Linda Froberg
Mr. James Gabbert
Ms. Mary Ellen Gadski
Ralph Gaebler and Louise Schlesinger
Dr. and Mrs. Richard Gantz
Dale and Kay Garber
Ms. Elicia Garske
Mr. Michael D. Gaulding
Mrs. Helen K. Geib
Mr. Herbert George
Mrs. Jean Gernand

Ms. Lynn Gibboney
Tracy and Shelly Gilliland
Ms. Sherry Gillis
Ms. Vickie Goens and Mr. Stanley Kiwor
Dr. Gordon Goodwin and Mrs. Zelma Taylor
Judith and William Goodwin
Nancy and Sherman Goodwin
Ms. Barbara Gorney
Brent and Nancy Grafe
Mr. George C. Gray
Sarah G. Gray
Lisa Green and Roger Fisher
Mr. Edwin H. Greenebaum
Jim and Donna Gregar
Ms. Patricia Griffin and Mr. Lance Ratliff
Ronald and Jacqueline Grimes
Ms. Toni Grimes
Janet and Walter Gross
Ms. Rosanne Gross
Bill and Phyllis Groth
Ms. Susan J. Grow
Tom and Susan Hacker
Mrs. Suzanne Hahn
Dr. James and Mrs. Julia Haines
David J. and Jeanne C. Hamernik
Mr. Joseph Hand
Nancy and Randy Hankins
Mrs. Elise A. Hanley
The Hon. John F. Hanley
Ms. Ann Marie Hanlon
Ms. Anita J. Harden
Ms. Mary J. Hardin
Ms. Carol Harris
Ms. Sandra Harris
Toby and Cameron Harris
Jeannine and Gayle Harrold
Ms. Rachel Harrold
Nancy Ann Harter
Mrs. Laura Harting
Leah Hartsock
Louise and Larry Haskett
Mr. and Mrs. Ken Hasselkus
Mr. Richard Guy Hawkins
Dr. Timothy Hawkins and Ms. Margaret Hurdlik
Ms. Nichelle Hayes
The Hon. Randall Head and Ms. Lisa Swaim
Mr. Andrew G. Hein
Mrs. Betty Helton

Ms. Diane Henderson
Toots and Jim Henderson
Jennifer and Skip Hendricks
Dick and Pamela Herman
John and Nancy Herrin
Marc and Rosalie Hetzner
Dr. Robert E. Hickam
Mrs. Mary Hill
Ms. Teresa Elaine Hinshaw
Mr. Jack G. Hittle
Jay and Judy Hodges
Marylynn Hoffmann and Jim Hoffmann
Mr. Patrick Hogensen
Jon and Ledra Holden
Martin F. Hollenbeck
Mr. and Mrs. Keith Holmes
Mrs. Kathy Holsher-Dobbs and Dr. David Dobbs
Mr. and Mrs. Kurt R. Homann
Ms. Helen M. Hopp
Mr. and Mrs. Fred Hostettler
Mr. and Mrs. Larry House
Mr. Doug Hubbs
Mrs. James E. Hughes
Mrs. Lizabeth Hughes
John Hunt and Clarice Stegall
Charles and Samantha Hyde
Monty Hyten
Mr. and Mrs. Max E. Inglert
Bob and Grace Ireland
Lisa Jackson and Tom Laird
Frances E. Jacobs
Mrs. Lucy Jacobs
Alan January
Carlyanna Jay
Dr. Rosemarie Jeffery and Mr. James Jeffery
Mr. Daniel T. Jensen
Patrice Y. Jones
Mrs. Sharon J. Jones
Les and Deb Jordan
Mr. James S. Jovanovic
Pam and Gary Jursik
Mr. Clarke Kahlo
Ms. Beverly A. Kane
Diane M. Kane
Dr. Martin Kaplan and Mrs. Linda Kaplan
Mr. Kenneth Kavanagh
Dr. Gerald T. Keener, Jr.
Molly T. Kehr
Mr. John T. Keith

Mary Elisabeth Keller and Anne Keller
Rick and Brenda Kelley
Dr. Paul D. Kelty
pegg and Mike Kennedy
Ms. Judith Kenninger
Mr. Kevin Kenyon and Ms. Bonnie Haruch
Ms. Leah Ketcham
Mr. J. Bradley King
Kyle W. King, O.D.
Paula King
Mr. and Mrs. Ross J. King
Mr. and Mrs. Peter W. Kinne
David and Linda Klinck
Mr. John Klinkose and Mrs. Jennifer Hawk
Laurie A. Klinger
Mr. and Mrs. Mitchell Knigga
Jackie Knight
Mr. John Kochanczyk
Mr. and Mrs. Ken Koehler
Stephen L. and Beverly A. Koepper
Ms. Rita Kohn
Ms. Mary Korczak Secor
Mrs. Carolyn Kormelink
Mrs. Mary H. Kraft
Ms. Jessica Kramer and Mr. Garrett Honeycutt
Mrs. Louise Krick
Christine Garrott Krok
Mr. David and Lisa Kroll
Chris Kunz and Hassan Saffouri
Christ and Pam Kurtis
Emily and Robbie Kusz
Mr. and Mrs. Charles D. Kysar
Amy Lain and Gary Anteplept
Mr. G. B. Landrigan
Jon Laramore and Janet McCabe
Linda Laski
Dr. Donald L. Layton
Mr. Thomas E. Leahey
Richard and Jane Lengacher
Ms. Stine Levy
Ms. Rose Lewandowski
Mr. Jordan Lewis
Phyllis Lewis and Jonathon Lewis
Robert W. Lewis
Teena and Dave Ligman
Mr. and Mrs. Charles A. Liles
Mrs. Susanna Lilovich
Ms. Laura Lindenbusch
Juanita A. Linn
Mr. Paul Lippert and Dr. Harlan Higgins

Mr. and Mrs. Ken Litteken
Mr. and Mrs. C. David Little
Ms. Karen Livengood
Richard and Lisa Lobdell
Mr. James T. Lockwood, Jr.
Mr. Link Ludington and Mr. Robert Corum
Mr. and Mrs. Michael Luenz
Kristi and Robert Lundquist
Mr. Robert Lynn
Rebecca Magallanes
Mr. and Mrs. Robert F. Manges
Mr. and Mrs. Morton J. Marcus
Ms. Kate Marvel and Mr. Cornelius Martin
Michael Martone
Mr. Steven D. Martz
Mrs. Editha Masters
Mr. Michael A. Matlock
Duane and Beverly Matthews
Alinda and Edward Mattiuz
Claire and Andy Maxson
Mr. Joe Mayfield
Ms. Susan J. McCarrol
Ms. Gale D. McCarty
Elizabeth and Terrence McCloskey
Mr. Paul McClure
Mary Ann McCormick
John McCreery
Don and Paula McDaniel
Elizabeth Thies McDaniel
Brian and Cecelia McDonnell
Dr. Lee McHenry
Mr. and Mrs. Michael R. McKay
Dr. and Mrs. Gordon McLaughlin
Ms. Robyn McMahon
Mr. Patrick McNaughton and Ms. Diane Peline
Laney Meis
Mr. and Mrs. Richard J. Meister
Beverly and Michael Metze
Ms. Stevie Meyer
Richard and Karen Milam
Ms. Beatrice R. Miller
Mr. Curt P. Miller
Mr. David Miller and Mrs. Nancy Mayo-Miller
Mrs. Georgia Miller
Dr. and Mrs. Scott Miller
Mrs. Spiro Mitsos
Mrs. Elaine Moon
Ms. Mandy Moon

Christopher Moore and Mary Ellen Straughn
Mr. James B. Moore
Mr. James Moore and Mrs. Judith Moore
Ms. Melissa Moran
Steve and Lin Morrison
Mr. Robert Mount
Mr. Tom Muchesko
Jim and Mary Kay Muehlbauer
Mr. Michael Mullett and Ms. Patti March
John J. Mulvihill
Ms. Judith Murphy
Glenda and Patrick Murray
Bob and Cheryl Musgrave
Mr. Steven A. Mussett
Fayla and Barry Nanz
Ms. Dianne E. Neilson
Mr. and Mrs. Charles F. Nelson
Mr. and Mrs. Dave Newcomer
Leslee and David Newhouse
Scott and Chris Newlund
Mr. Eric Newman
Mrs. Dorothy A. Nicholson
Mr. and Mrs. Lawrence Nilles
Mr. and Mrs. David Nord
Nancy Norton
Elizabeth Nygaard and Travis Sims
Patrick J. O'Brian
Kevin and Rita O'Donohue
Mr. and Mrs. Mark Oglesby
Ms. Helen W. O'Guinn
Pamela and Peter Oleson
Daniel and Melie Orellana
Susan Orr
Mr. and Mrs. Matthew Orth
Mrs. Julie H. Owen
Cyndi and Scott Paceley
Jon and Andrea Pactor
Kevin and Wendy Page
Sherron Pampalone
David and Debra Parcell
Ms. Robin-Elizabeth Parsley
Mr. David J. Patterson
Mrs. Dorit Paul
Mr. and Mrs. Ben Pauley
Robert A. and Wanda L. Pearson
Deborah Peddie
Mr. and Mrs. James Penick
Mr. Michael Perlich
Mr. and Mrs. Curtis Peters
Mr. and Mrs. Greg Petrowich



Indiana Landmarks' low-interest loans help local groups revitalize historic properties and carry our preservation covenants to ensure future protection. Last year, we gave a \$50,000 loan to Crawfordsville Masonic Temple Foundation to aid repairs at the 1901 lodge the organization operates as an events facility (left), as well as a \$100,000 to Richmond Neighborhood Restoration to support rehabilitation of the 1876 Dulin House (below).
PHOTOS BY NOAH NOBBE AND COURTESY RICHMOND NEIGHBORHOOD RESTORATION

Lending Power

INDIANA LANDMARKS' ENDANGERED PLACES

Loans help boost local preservation efforts by providing critical financial support to local nonprofits for the acquisition and rehabilitation of historic properties. As a condition of the loans, Indiana Landmarks attaches covenants to the deeds to protect each buildings' architectural character and ensure their ongoing preservation. In the last year, we made loans to three groups.

Concerned about underutilized and vacant properties in downtown Tipton, a group of residents formed the nonprofit community land trust Tipton Thrives Trust to acquire, restore, and maintain such buildings. Last spring, Indiana Landmarks gave the group a \$325,000 loan to acquire three historic commercial buildings. Tipton Thrives Trust—one of Indiana Landmarks' newest local affiliates—commissioned structural assessments to prioritize repairs and determine next steps, hoping to return these buildings to active use on the courthouse square, with businesses at street level and housing above. "We want these properties in the hands of locals who have their highest and best use in mind along with the capacity to restore them," says Tipton Thrives Trust board member Mindy Colbert.

In Crawfordsville, Indiana Landmarks gave a \$50,000 loan to Crawfordsville Masonic Temple Foundation, helping bridge a funding gap for repairs at the city's 1901 Neoclassical-style Masonic lodge. Since acquiring the building in 2019, the nonprofit group has worked to rehabilitate the landmark and restore its status as a community hub.

A \$100,000 loan to Richmond Neighborhood Restoration (RNR) is helping the group rehabilitate the 1876 Washington Dulin House in the city's Starr Historic District. The group purchased the property from Indiana Landmarks in 2024, the latest in RNR's serial rehabilitation efforts returning deteriorating houses in the city to residential use.



Mary Caye Pfister
Theodore John Pigott and Shu-Ting Chiu
Ruth Ellen and R. Byron Pipes
Mr. Maurice Plambeck
Mr. Donald Popielarz
Jim and Charlotte Price
Mr. Nelson Price
Mr. Edgar Allen Pruitt
Andrew and Dana Qunell
Dr. Geoffrey Raymer and Mrs. Wendy Raymer
Dr. Robin Reagan and Dr. Frank Messina
Mr. Michael Reddin
Pamela and William Rees
Ms. Julie Reeve
Robert and Paulette Reid
Mrs. Susan Reinhardt
Mr. Ralf Reisinger
Ms. Nancy A. Reiter
Nathan and Sonya Mateer Rempel
Ms. Laura Renwick
Alan and Donna Resetar
Mrs. Helen Reske
Mr. and Mrs. Thomas B. Reynolds
Megan and William Rhodehamel
Larry Wayne Richards
Mr. and Mrs. Todd L. Richards
Ben Richardson
Ms. Susan Ridgely-Cohen
Mrs. Robert Riestler
Ms. Sherry Riggin
Linda Riley
Mr. Stephen Risch
Rebecca Roach
Mr. Joseph G. Roberts
Ms. Judith Robertson
Mr. and Mrs. Barrett Robinson
Jim Robinson and Annette Schlagenhauff
Mrs. Kathy Roemmel
Mr. and Mrs. Garry Rollins
Mr. and Mrs. Raleigh Rolston
Annie Roof
Mr. and Mrs. James Ross
Mrs. Roberta Ross and Mr. David Hoffmann
Mrs. Megan Rubey
Mike Ruff
Mr. Christopher Ruppel
Linda and J.D. Russell

Mark Rzepnicki
Lynette Sue Sage and Lary Sage
Ms. Peggy Sailors
Mr. Joel Samson
Holiday M. Sanders
Mr. and Mrs. James R. Sanders
Mr. and Mrs. Stewart Saunders
Rev. and Mrs. James P. Schafer
Ms. Rebecca Schafer
Robert and Rita Schilling
Mr. Wayne Schimpff
Dr. Mary Schmidt and Mr. Dwight Goldsmith
Mr. and Mrs. Vyron Schmidt
Dr. and Mrs. Charles Scholer
Roy and Mary Schreiber
Ms. Kris Schwickrath
Christina and John Scofield
Andrew R. Seager
Dr. Robert Sedlack and Ms. Catherine Hayek
Shirley Seitz
Greg and Robyn Sekula
Mr. and Mrs. William L. Selm
Mr. Kevin Senninger
Michael P. Sercer
Mrs. Sandy Setlik
Mrs. Carolyn A. Sharp
Mr Gene Shaw
Tim and Beth Sheets
Dr. Stephen J. Shideler
Mrs. Melba G. Shilling
Ms. Jennifer Shirk and Mr. Clinton Price
Mary T. Short
Alan and Deborah Shultz
Mr. John Simmermaker
Steve and Tracey Simmerman
Ms. Anita Sipes
David and Linda Sirugo
Sydley Skolnik
Ms. Susan J. Smale
Bobby and Helen Small
Bill and Susie Smalley
Ms. Joyce Smidley
Mr. Donald N. Smith and Mr. Sid Spear
Mrs. Elizabeth O. Smith
Mr. Gary Smith
Margaret W. Smith and Stephen K. Smith
Ms. Sara Lyn Smith
Stephen R. and Anne S. Smith

James and Elizabeth Solberg
Ms. Libby Somerville
The Sowinski Family
Greg and Carin Spalla
Dean Spenner and Ruth Dwyer
Pauline Spiegel and Peter Grossman
Kathleen and David Sprunger
Ms. Veda Stanfield and Mr. Steve Arnold
Mr. and Mrs. Jim Steckler
Mrs. Rosalyn Stedman
Mr. Glenn Steffen
Ms. Angela Stephens Tarter
George and Monica Stephenson
Ms. Maryann Stevens
Dr. and Mrs. James Stiver
Bill and Sally Stockton
Tom and Kim Stokes
Ms. Dona Stokes-Lucas and Christopher Lucas
Mary Ann Storm
Ms. Della Stott
Roy Streater and Marcie Sherman
Clay and Jo Stuckey
Ms. Mary C. Sturm and Mr. Roy Gabriel
Jennifer Sugarman and Konrad Banaszak
Dr. Arnold L. Sweet
Mr. Blake Swihart and Ms. Laura Krinock
Mr. Michael Tackitt
Chris and Tracy Taelman
Ms. Charlene Talley
Mr. and Mrs. James Taylor
Lawrence and Margaret Taylor
Mr. Richard Tesar
Mr. and Mrs. D. Michael Thompson
Ms. Nancy D. Thompson
Allen and Denyse Thorpe
Mr. and Mrs. George Tikijian, III
Mrs. and Mr. Polly Tilford
Major and Mrs. Emory E. Toops, III
Carol and Stephen Trippel
Helen Tulloch
Ms. Cathy Turner
Dan and Lisa Tychonievich
Mr. Josh Valentine
Dr. and Mrs. Paul R. Valliere
Mr. and Mrs. William C. Van Horne, Jr.
Dr. John C. Van Nuys
Julianne and Rich Van Wyk
Ms. Valerie Vanden Bossche
Sara Beth and Charlie V. Vaughan

Ms. Laurel Vaughn
Ms. Jan Vetrhus
David and Nonie Vonnegut-Gabovitch
Ms. Mesgana Waiss
Mrs. Ann Ward
Mr. and Mrs. William H. Ward
Dr. Jeffrey X. Watt and Mr. Robert J. Dickinson
Mr. and Mrs. Mark Weatherwax
Mrs. Kay Weaver
Mr. Merritt Webb and Ms. Ann Fairfield
Mr. and Mrs. Rodney G. Webb
Ms. Laurie Weinzapfel and Phil Schmitt
Barbara Weir and Jay Thomas
Don and Anna Weiser
Mrs. Jackie Wellenreiter
Wayne and Ophelia Wellington
Mr. and Mrs. Dennis White
Andy and Lynn Wiesman
Mr. Andrew V. Wilkinson
Ms. Fay H. Williams
Jerry and Julie Williams
Mr. and Mrs. Steve Williams
Suzan K. and Randall R. Williams
Katherine and Donald Willing
Prof. Scotty Wilson
Janet Wilzbacher
Dave and Julie Wingate
Mr. and Mrs. Robert Wingerter
Mr. and Mrs. David Woll
Ms. Sandra Woodward
Mrs. Carol Phillips Wright
Ms. Sarah T. Wurtz
Mr. Timothy Yale and Dr. Diane M. Buyer
LeVon and Anita Hoffman Yoder
Mr. David Young
Ms. Susan Zabriskie
Frederick and Jennifer Zahrt
Ms. Jean Zerkel
Linda and John Zimmermann

**Deceased*

For a list of all Indiana Landmarks grants made during the fiscal year: indianalandmarks.org/resources

CORPORATIONS, FOUNDATIONS, ORGANIZATIONS & GOVERNMENT

Indiana Landmarks is grateful to receive philanthropic, government, and corporate support for events and preservation programs. Grants and donations of money and buildings strengthen our ability to save and revitalize historic places statewide. The list below includes gifts received between September 1, 2024, and August 31, 2025. Want to join these donors? Contact Indiana Landmarks' Development Department, development@indianalandmarks.org.

\$100,000+

Hanover College
Herbert Simon Family Foundation
Woodard Van-Riper Family Foundation

\$50,000-\$99,999

City of Terre Haute
Health and Hospital Corporation of Marion County
O'Bannon Foundation, a fund of The Indianapolis Foundation
Richard M. Fairbanks Foundation, Inc.

\$25,000-\$49,999

Efroymson Family Fund, a CICF Fund

\$10,000-\$24,999

Charley Creek Foundation, Inc.
Church, Church, Hittle & Antrim
Dovie Stewart Cox & Chester A. Cox, Sr. Memorial Fund and Stanford H. Cox Fund., funds of CICF
Elaine and Eric Bedel donor-advised fund at Schwab Charitable
Heritage Fund of Bartholomew County
Lilly Endowment Inc.
MacAllister Machinery Company, Inc.
Taggart Birge Family Fund

\$5,000-\$9,999

Anonymous
Bartholomew County Public Library
Black Onyx Management
B-Side Creative Campus
CAPTRUST Financial Services, LLC
David and Sandra Haist Charitable Fund
The Dayton Foundation
Eli Lilly and Company Foundation
Matching Gifts

Indiana State Bar Association
JCL Fund, a donor-advised fund of Fidelity Charitable
The Linnea & George Bartling donor-advised fund of Renaissance Charitable Foundation
The Paul F. and Martha L. Benedict Charitable Family Fund, a fund of Central Indiana Community Foundation
Powers and Sons Construction Company, Inc. donor-advised fund of Fidelity Charitable
Purdue University
William & Karen Christensen Charitable Fund

\$2,500-\$4,999

Arthur Jordan Foundation
Arts Council of Indianapolis
Axia Urban, LLP
Carol and Larry Landis Special Account of Fidelity Charitable
Chapin Park, Inc.
Core Redevelopment, LLC
DT Gift Fund
Forvis Mazars
McKamey Family Giving Account
National Trust Insurance Services, LLC
The Nature Conservancy
Southold Historic Preservation Scholarship Fund of the Community Foundation of St. Joseph County
Wolfe House Movers of Indiana, LLC
Younger Brothers, Inc.

\$1,000-\$2,499

A and B Coin and Jewelry LLC
Anne Scheele Charitable Fund at Schwab Charitable
AP Development

20 INDIANA PRESERVATION

indianalandmarks.org 21

Architectural Revivalist
Arda Design
Ball State University
Bill and Cynthia Longest Charitable Giving Fund
Brandt Construction, Inc.
City of Columbus
Cris Halter & William Fraser Donor Advised Fund
Cultural Resource Analysts, Inc.
David Lupke donor-advised fund at Schwab Charitable
Dexter and Rosemary Cooley Charitable Family Trust
F.C. Tucker / Lafayette
Flanner Buchanan Cremation-Burial
Glick Philanthropies
Goelzer Investment Management
Gregory & Appel Foundation, a donor-advised fund of Fidelity Charitable
Herd Strategies
Historic Preservation & Heritage Consulting, LLC
Indiana Housing & Community Development Authority
Indiana University
Indianapolis Recorder
Indianapolis Urban League
Ink & Ale Brewhouse
J.P. Morgan Donor Advised Fund Program
Kammerling Construction
Kirby Risk Corporation
Krieg DeVault, LLP
Lost Creek Grove Restoration & Preservation Foundation, Inc.
Luminaut
Marvin Windows and Doors
Michaelson’s Outdoor Solutions, LLC
Midwest Restoration, Inc.
Mirror Indy
The National Bank of Indianapolis
The ORL Foundation, Inc.
Peace Learning Center
The Penrod Society Ltd.
Phillips Temple C.M.E. Church
RATIO Architects, LLC
RCS + Associates
The Samuel L. Westerman Foundation
Sands Charitable Fund
SJCA, Inc.
Stegall-Berheide-Orr Funeral Service

The Taylor Family Foundation
The Thomas L & Mary C Heyob Charitable Fund, a Donor Advised Fund of Renaissance Charitable Foundation
USMC Veterans
Van Rooy Properties

\$500-\$999

Alan and Deborah Rasper donor-advised fund
Allen Chapel A.M.E. Church, Inc.
Ambrose Property Group
arcDESIGN
ARCHitecture trio, Inc.
ARSEE Engineers, Inc.
Bob and Debbie Goldman Charitable Gift Fund
Browning Day
Cara Huffman, F.C. Tucker Realtor
City of North Vernon
Community Foundation of Southern Indiana
Conrad Schmitt Studios, Inc.
CSO
Dr. Christian Wolf and Elaine Holden Charitable Fund
Ehret Family Foundation Inc.
Episcopal Diocese of Indianapolis
Honeywell Arts & Entertainment
Indiana Bar Foundation
Jungclaus-Campbell Co., Inc. Charitable Fund
K. W. Garner Consulting
Kieser Consulting Group, LLC
Kil Architecture & Planning
Kristie L. Hill and Eric C.A. Johnson fund of Schwab Charitable
Marion County Bar Association, Inc.
Matt and Susan Melfi Charitable Fund, an American Endowment Foundation Donor Advised Fund
McComb Window and Door Company
Morgan Stanley Global Impact Funding Trust, Inc.
Nixon Charitable Fund
Onyx+East
Philip Pierce and Anthony Schreiber fund of Renaissance Charitable Foundation
R. B. Annis Educational Foundation
R. E. Dimond and Associates, Inc.
RJE Business Interiors

Rosemary Dorsa Fund
Rundell Ernstberger Associates, Inc.
Sacopulos Law Firm
Sanders & Associates, Inc.
Schmidt Associates
Shepherd Financial
Stenz Corporation Inc.
StudioAxis
Vanguard Charitable
Weintraut & Associates
Wiss, Janney, Elstner Associates, Inc.

\$250-\$499

Adam J. Green, Architect
Bucher Trucking and Excavating, LLC
C. Mark Wetzel Donor Advised Fund
Caroline Scott Harrison D.A.R.
Crazy Horse Tavern
Frost Framing
Jon and Judy Birge Giving Fund
Louis Joyner Architect LLC
Madison Christian Health & Developmental Services, Inc.
Roberts Settlement
Wayne County Convention and Tourism Bureau, Inc.
The Woodstock Gallery

UP TO \$249

Anonymous
Atira Hotels
Bauer Family Charitable Fund
Boundless Blessings
Bradbury Associates, Inc.
Bristol Myers Squibb Foundation
Matching Gifts
Caterpillar Foundation
Dan Haines Construction Company, Inc.
DeBaun Funeral Home
Design 27
Elizabeth Thies McDaniel Charitable Fund
Fieldgate Farm
The Froberg Family Fund
Frost Engineering & Consulting Company
Furkis Architectural Consulting
Gilded Owl Design, LLC
Grinsfelder Associates Architects, Inc.
Harkleroad Properties
HBS Insurance, Inc.

Heritage Society

Since Indiana Landmarks’ founding in 1960, generous bequests have helped us grow into the nation’s largest statewide preservation organization and sustained our work saving meaningful places. For supporters who’ve included us in their estate plans with a bequest or other deferred gift, we created the Heritage Society.

If you have included Indiana Landmarks in your estate plans, please let us know so we can express our gratitude and add you to the Heritage Society. Contact Indiana Landmarks’ Development Department, development@indianalandmarks.org.

Mr. and Mrs. John A. Alexander*
Jean A. Allan
Mr. Robert B. Annis, Jr.* and Mrs. Elmira Annis*
Anonymous
Mr. Stephen K. Anshutz
Mr. and Mrs. Thomas G. Ayer
John and Susan Barnard
Frank and Katrina Basile
Mrs. Virginia Kells Basso*
Mrs. Charles A. Bookwalter, II
Ms. Phyllis J. Bramer*
Mr. David M. Buchanan
Michael and Mary Burger
Mr. H. Earl Capehart, Jr.*
Garry Chilluffo and Craig Ware
Dr. John E. Christian*
Arthur* and Carolyn Cleland
Mrs. Mabelle N. Collins*
Ms. Tina Connor
Mr. William Cook* and Mrs. Gayle T. Cook*
Mrs. Marilyn J. Creason*
Linda Christian Davis*
Marsh and Grace Davis
Miss Margaret Emelie DePrez*
Ms. Marilyn J. Devitt*
Cheri and Rollie Dick
Mr. and Mrs. Andrew M. Downs
Ms. Sara Edgerton
Mrs. Lori Efroymsen-Aguilera
Dr. and Mrs. James P. Fadely
Mr. and Mrs. Russell Fortune, Jr.*
Ms. Sheila Fortune*

Mrs. Phoebe B. Foster*
Ms. Pamela L. Frantz*
Mr. and Mrs. Ronald A. Fritz
Mr. Richard L. Funkhouser*
Mr. Ramon L. Gerber*
Mrs. Jean Gernand
Mrs. John Gibson*
Col. Phillip J. Gick and Mrs. Susan C. Gick
Mr. Dennis S. Gilman*
Mr. Olen R. Gowens*
Dr. Thomas H. Greist and Dr. Anne Greist
Mrs. Amanda Grube
Frank and Carolyn Gunter
Mrs. Barbara T. Habig*
Dave and Sandy Haist
Mrs. Betsy Toy Hall*
Jennifer Sue Hawk
Mr. Paul Hayden
Thomas L. and Mary C. Heyob
Mr. John H. Holliday*
Mr. James E. Hoover*
Emerson B.* and Jane H. Houck
Mr. Francis M. Howard*
Mr. and Mrs.* Tom Charles Huston
Marjorie and James* Kienle
Wadean LaHue Kintner*
Joe and Emily Kniesly
Mrs. Paula D. Knoebel*
Mrs. Mary Margaret Barr Koon*
Mr. Michael B.* and Mrs. Betsy Kraft
Mrs. June Wright Kramer*
Thomas and Liliane Krasean
Mr. Kevin Krulewitch and Ms. Rosanne Ammirati

Gareth Kuhl and Amy Kotzbauer
Mark Kurth and Shelby Moravec
Ms. Deborah A. Lawrence
Mr. Eli Lilly*
Mrs. Dorothy P. Linke*
Bill and Cynthia Longest
Mrs. Dorothy B. Lynn*
Miss Ann Mallett*
Morrie* and Jan Maurer
Ms. Barbara Ann Maxwell*
Elizabeth L. McDonald*
Mr. Richard E. McKnight
Mr. H. Roll McLaughlin* and Mrs. Linda McLaughlin*
Ms. Nancy McMillan
Mr. and Mrs. David C. Meyer
Mr. Clayton C. Miller
Mrs. Rosemary P. Miller*
Mr. Dale Mitsch* and Mrs. Zelpha Mitsch*
Ronald V. Morris, Ph.D.
Mr. James P. Morrow*
Ms. Carol A. Morton
Mrs. Mary Jo Mozingo*
Mr. Todd R. Mozingo*
Mr. Paul A. Myers
Ms. Arline Nation
Mr. Ralph G. Nowak
Dr. Mary Ellen O’Connell and Mr. Peter Bauer
Dennis and Peggy Paustenbach
Sharon Pfister
Mr. Theodore N. Popoff*
Ms. Judy Powell*
Mr. and Mrs. John Prendergast*

Mrs. Rosemary Husted Prentice*
Mr. Walter L. Prosser* and Mrs. June Prosser*
Laurie Radke-Brennan*
Dr.* and Mrs.* George F. Rapp
Laura Alison Reiff*
Dr. James and Rev. Lynn Renne
Jean* and Lamar* Richcreek
Bette* and George* Roberts
Ms. Mary Ann Roman*
Sallie W. Rowland*
Susan M. Rutsen
Mr. Henry C. Ryder, Esq.*
Doris Anne and Tim Sadler
Mr. Phil G. D. Schaefer
Anne and Rod* Scheele
Dr. Joan Schreiber*
Andrew and Sharon* Seager
Mr. John Seiberling*
Greg and Robyn Sekula
Mrs. Jean Servaas*
Mr. and Mrs. Timothy S. Shelly
The Hon. Randall T. Shepard and Ms. Amy W. MacDonell
Mr. Charles E. Short
Mr. Donald N. Smith and Mr. Sid Spear
Mrs. Lisa Sutphin*
Mr. Carroll Sutton*
Dr. Marcia Suvelza
Mr. James Teall*
Sandra L. Thomson*
Ms. Patricia Tollens*
Miss Edith D. Venn*
Jane T. Walker
Dr. Gertrude L. Ward*
Mr. Philip N. Williams*
J. Reid Williamson, Jr.*
Mrs. Edna O. Woodard-Van Riper*
Carol and John Zeglis
Todd and Terry Zeiger

**Deceased*

Henry C. Smither Roofing Company, Inc.
Hudson Dermatology
Jeffrey D. and Christine Burton Arnold
Fund at T. Rowe Price Charitable
Jessica Butler, Legacy Land Use &
Realty
John D. and Jane G. Foell Charitable
Fund
J.W. McQuiston Architecture+Interior
Design
Judith Kleine Architect, LLC
Kappa Kappa Kappa Associates New
Albany Chapter
Kelly Box & Packaging Corp.
Knies Construction, Inc.
krM Architecture+
Lefever Historics
Leighton Family Fund
The Lew Wallace Study Preservation
Society, Inc.
Mainstreet Shelbyville, Inc.
Martin & Tina Hollenbeck donor-advised
fund
Masonry Cosmetics, Inc.
McDonnell Charitable Giving Account
Merck
Midland Arts and Antique Market
Mohler Architects, PC
National Gary Theodore Roosevelt
Alumni Association, Inc.
Oasis Diner
PC Home Center
RE/MAX Lifestyles
Richmond Art Museum
Robyn McMahon Donor Advised Fund
of the U.S. Charitable Gift Trust
Roses and Rainbows
Sisters of Our Lady of Mount Carmel
Carmelite Monastery
Stephen J. Shideler Charitable Fund
Storrow Kinsella Associates, Inc.
Stratton-Karsteter Funeral Home
Unity Foundation of La Porte County
Vieck Donor Advised Fund
Wagner Architecture
Western Specialty Contractors
Wollenberg Building Conservation LLC
Wolters Kluwer

GIFTS IN KIND

Andrew and Brittany Bain
Andrew Davis Clothiers
Barbara Hellyer
Big Daddy’s BBQ
Mr. Norman K. Brown
Bruce and Julie Buchanan
Caribbean Roots
Chilluffo Media
City of Gary Common Council
Cookie Corner, LLC
Corken Steel Products
Ms. Sara Edgerton
David Goddy
Eskenazi Museum of Art at Indiana
University
Mr. Joe Everhart and Mr. Ken Ramsay
First Savings Bank of Hegewisch
French Lick Resort
Graduate by Hilton Bloomington
Henry County Historical Society
Hotel Tango Distillery
Indiana Dunes National Park Lodging/
Beachwalk Vacation Rentals/
Wanderlux
Indiana Memorial Union Biddle Hotel &
Conference Center
Indianapolis Motor Speedway Museum
Jennings County Historical Society -
Our Heritage, Inc.
Mr. Erick Johnson
Knickerbocker Roofing and Paving
Mr. Lee Lewellen
Mr. Anthony Manuel
Miller Pizza Company
Mirror Indy
Mirth
Newfields
NWI Veteran’s Village
Martin and Maribeth Rahe
Salesforce, Inc.
Schmidt Associates
Janet and Jeffrey Stroebe
Mr. Adam Thies
Tiny’s Coffee Bar
Edward and Jessica Trudeau
William Wilson Auction Realty, Inc.
Witherspoon Presbyterian Church
MaDonna and Andy Wolf

GIFTS IN HONOR & MEMORY

Between September 1, 2024, and August 31, 2025, several people made gifts to Indiana Landmarks remembering departed loved ones or honoring friends, relatives, or colleagues. For information on honor and memorial gifts, contact Indiana Landmarks’ Development Department, development@indianalandmarks.org.

HONOR GIFTS

In honor of A’Lelia Bundles
Bruce and Marcia Gascho
In honor of Marsh Davis
The Honorable Sarah Evans Barker and Mr. Kenneth R. Barker
Hilary and Travis Barnes
Bruce and Julie Buchanan
Tina Connor
Mr. and Mrs. Carl Cook
Mr. and Mrs. Mike Corbett
Mrs. Ellen Swisher Crabb and Dr. David W. Crabb
Donald and Dolly Craft
Cheri and Rollie Dick
Ms. Sara Edgerton
Dr. and Mrs. James P. Fadely
Mr. and Mrs. John N. Failey
Greg and Mary Beth Fehribach
Mr. and Mrs. Daniel H. Ford
Ms. Sharon L. Gamble
Cathy and Steve Gatchel
Col. Phillip J. Gick and Mrs. Susan C. Gick
James A. Glass, Ph.D.
Melissa and Scott Glaze
Mrs. Barbara J. Goddard
Chandler and Jingle Igleheart Hagey
Mr. George Hanlin
Mr. and Mrs. Carl Harcourt
Emily and Robert Harrison
Kay and Tom Hervey
Dean Kessler and Tyler Koontz
Mark Kurth and Shelby Moravec
Bill and Cynthia Longest
David and Barbara Malson
Mr. and Mrs. James McCammack

Ms. Marleen Newman and Dr. William Newman
Mr. Ralph G. Nowak
Sharon and Ray Ontko
Caitlin Poe and David Bartley
Mr. Kenneth Remenschneider and Dr. Sharon Hoog
Dr. James and Rev. Lynn Renne
David and Miriam Resnick
Charles T. Richardson
Ms. Kassie Ritman
Tim and Meg Shelly
The Hon. Randall T. Shepard and Ms. Amy W. MacDonell
Ms. Jennifer Shirk and Mr. Clinton Price
Lee Ann Smith and Mark C. Webb
Rich and Evalyn Steininger
Garnet Vaughan and David Payne
Frank and Jane Walker
Ms. Connie Weinzapfel
Charlitta and Robin Winston
Mr. and Mrs. Turner Woodard
In honor of Marsh and Grace Davis
Brian and Karen Weber
In honor of Maizie M. Glover
Mr. Bryan Glover
In honor of Paul Hayden
Dr. Mary Anne Bain and Dr. Jim Bain
In honor of Indiana Landmarks Staff
Nathan Allaire
Amanda Arcidiacono
Bethany Baugh
Alex Brooks
Melissa Browning
LaChelle Carter

Kyle Coslow
Mark Dollase
David Frederick
Dan Frotscher
Sharon Gamble
Evan Hale
Kelly Harris
Rachel Harrold
Jennifer Hawk
Paul Hayden
Tracy Jones
Tommy Kleckner
Mitchell Knigga
John Kochanczyk
Jessica Kramer
Amy Lain
Stevie Meyer
Calvin Nguyen
Noah Nobbe
Rita O’Donohue
Debra Parcell
Ryan Parks
Laura Renwick
Stephanie Richard
Annie Roof
Kevin Sage
Mary Scharnberg
Greg Sekula
Susan Shepherd
Suzanne Stanis
Blake Swihart
Eunice Trotter
Stephanie Vines
Madonna Wagner
Brad Ward
Paige Wassel

Sandi Woodward
Mindi Woolman
Todd Zeiger
Kasey Zronek
Marsh Davis
In honor of Amy MacDonell and Randy Shepard
Mary F. Weis
In honor of Mrs. Judy O’Bannon
Kevin Murray
In honor of Rollison Estate and Trust Law
Kent Rollison
In honor of Eunice Trotter
Brad and Cara Ward

MEMORIAL GIFTS

In memory of Arla J. Anderson
Monica and Paul Cannaley
In memory of Patti Anderson
John and Sandy Anderson
In memory of Linda Black
Dr. Jayne Beilke
In memory of Mrs. Gayle Cook
Mr. and Mrs. Greg L. Blum
In memory of Judy Deng
Ms. Karen Walker
In memory of Thomas Leo Johnson
Mr. Scott Wood
In memory of Brenda Kammerling
Chad Kammerling
In memory of Doris Kennedy
Mrs. Diane Kohan
In memory of Jean Cline Jones Kyle
Deborah Cline Kish and Kevin Kish



BRIEFLY NOTED

INDIANA LANDMARKS IS pleased to welcome new employees at its Indianapolis headquarters. **Jamie Simek** joins as chief advancement officer and will oversee development, marketing, and special events initiatives. She previously worked at the Eiteljorg Museum and holds over 20 years of

donor relations and fundraising experience. A past Indiana Landmarks employee, **Jennifer Hiatt** returns to serve as director of development, with experience working in membership and development at the Indianapolis Motor Speedway Museum, the Eiteljorg, and Indiana Repertory Theatre. **Katherine (Kat) Harper** joins as director of operations managing system efficiencies and reporting. She previously worked at Allworth Financial, leading integration efforts, overseeing project management, and aligning operational procedures with strategic goals.

Tours & Events

Trades Training Workshops

South Bend

Monthly workshops presented in partnership with South Bend TradeWorks equip homeowners and contractors with skills to address historic building repairs. Visit our website for details.

JAN. 7 - Woodshop Basics

FEB. 4 - Historic Hardware Repair

MAR. 4 - Wood Floor Repair

Athenaeum Building Tour

Jan. 11 & Feb. 22, Indianapolis

Explore the history, architecture, and preservation of the Athenaeum, as it evolved from German club-

FRENCH LICK & WEST BADEN SPRINGS TOURS

Discover the fascinating history of two turn-of-the-century hotels and their award-winning restorations on daily guided tours. Advance tickets encouraged. (Wed.-Sat., Jan.-May & Tues.-Sat., June-Dec.)

West Baden Springs Hotel
2 & 4 p.m.

French Lick Springs Hotel
Noon

\$18/adult, \$15/member, \$8/child ages 6-15, and are free to children ages 5 and under

indianalandmarks.org/french-lick-west-baden

house to a hub of modern urban life. Tours depart at 1:30 p.m. and 2 p.m. Advance tickets encouraged. \$15/adult; \$12/member; \$10/child (ages 6-11); free to children ages 5 and under.

Propylaeum Building Tour

Jan. 25 & Feb. 8, Indianapolis

Take a deep dive into Indy history at the Propylaeum, a Queen Anne-style landmark that has served as a hub for arts, culture, and women’s leadership since 1923. Presented in partnership with the Propylaeum Historic Foundation. Tours depart at 1:30 p.m. and 2 p.m. \$15/general public; \$12/member; \$10/child (ages 6-11); free to children 5 and under.

Conversations in Indiana African American History

Feb. 12, Indianapolis and online

Freetown Village presents historians, researchers, and educators sharing their knowledge of Indiana’s Black heritage and culture. 6 p.m. at Indiana Landmarks Center and online. Free with registration.

Indiana Main Street Day

Feb. 24, Indianapolis

Members of Indiana Main Street groups are invited for a day of collaboration and conversation, meeting with legislators to share the impact of Indiana Main Street programs on local economies and the value of revitalizing historic spaces. 9 a.m. to 3 p.m. Registration required.

Rescue Party

Apr. 25, Indianapolis

Save the date for “Rescue Party: A Century of Progress.” Join us at Indiana Landmarks Center for a 1930s-inspired party celebrating restoration of Indiana’s iconic House of Tomorrow (see p.3), which first captivated the public at Chicago’s 1933 World’s Fair. We’ll roll out the red carpet with great music, fantastic food, and raise funds to save endangered places. Watch our website for details.

Visit indianalandmarks.org/tours-events to learn more and register. All times are Eastern unless noted.

In memory of Charles Matthews
Prof. Dave Kelso

In memory of Morrie Maurer
Heather Maurer

In memory of Shirley Paloucek
Mrs. Cookie Ferguson

In memory of Sallie W. Rowland
Dr. Kristen Bowes
L. Gene Tanner

In memory of Virginia Ryder
Ms. Ebony Chappel

In memory of Sandi Servaas
Eric and Marcia Servaas

In memory of C. Wesley Shook
Mr. Charlie Shook

In memory of Paul F. Smith
Mr. Daniel Albrecht
Mr. and Mrs. Terry Bradbury
Michael and Mary Burger
Matthew Chevalier
Charles Corbin and Mary Kummings
Ms. Julie Crow
Mr. Dave Daru
Marsh and Grace Davis
Mr. Mark A. Dollase
Ms. Anne Dubin
Ms. Sharon L. Gamble
Ms. Penny Giles
William and Carol Harding
Mr. Christopher Harrell
Ms. Ann Holmes
Aleicha Ostler
Mrs. Anne E. Scheele
David and Nonie
Vonnegut-Gabovitch

In memory of Jean E. Spears
Lucia Spears, MD and Jay M. Smith
Charitable Fund, a fund of the
Indianapolis Foundation

In memory of Edna Violet Waggoner
Thurman
Ms. Lori Qadir

In memory of Darrell Tilford
Mr. and Mrs. Thomas Jones

In memory of Ron Winter
Mrs. Cynthia McIntyre

In memory of Marilyn Woods
Mr. and Mrs. Carl Harcourt

AFFILIATE ORGANIZATIONS

Indiana Landmarks relies on local preservation organizations as essential partners in saving and revitalizing historic places. As experts in their communities, these groups help spur development of landmark properties and call attention to threatened places. Statewide, 63 groups have formally allied with us as affiliates, a status that conveys benefits, including preferred interest rates on our Endangered Places loans, advertising historic properties for sale, and preservation workshops. Know of a group that should join us as an affiliate? Contact Suzanne Stanis, Vice President of Education, 317-822-7911, ssstanis@indianalandmarks.org.

ARCH, Inc.
Batesville Main Street
Bloomington Restorations, Inc.
Cambridge City Main Street, Inc.
Cedar Lake Historical Association, Inc.
Converse Historical Society
Cornerstone Society, Inc.
Decay Devils, Inc.
Delphi Preservation Society, Inc.
Downtown Wabash, Inc.
Fountain County Landmarks
Fox Lake Preservation Foundation
Franklin County Citizens for Historic Preservation
Franklin Heritage, Inc.
Greendale Main Street
Greenfield Historic Landmarks
Greentown Historical Society
Heartland Heritage, Inc.
Henry County Historical Society
Heritage Preservation Society of Putnam County
Herron-Morton Place Foundation, Inc.
Historic Connersville, Inc.
Historic Fairmount, Inc.
Historic Fall Creek Pendleton Settlement, Inc.
Historic Knightstown, Inc.
Historic Metamora, Inc.
Historic Michigan Road Association
Historic New Carlisle, Inc.
Historic Preservation Association of Jasper County
Historic Woodruff Place Foundation
Huntington Alert, Inc.
Indiana Barn Foundation
Indiana Lincoln Highway Association

Indiana National Road Association, Inc.
Jefferson County Preservation Council
Kankakee Valley Historical Society
Main Street Greensburg
Monon Civic Preservation Society
New Albany Main Street
Noblesville Preservation Alliance
North Manchester Center for History
Old Courthouse Foundation of Vanderburgh County
Old Evansville Historic Association
Owen County Preservation, Inc.
Preservation Society of Union City, IN-OH, Inc.
Preserve Henry County, Inc.
Preserve Historic La Porte
Pulaski County Historical Society
Richmond Neighborhood Restoration, Inc.
Rush County Heritage, Inc.
Save Our Stories
Saving Historic Orange County, Inc.
South Bend TradeWorks
Terre Haute Landmarks, Inc.
Tipton Thrives
The Paramount Heritage Foundation
Propylaeum Historic Foundation, Inc.
Twin Forks Chapter NSDAR, Inc.
Union Literary Institute Preservation Society
Vincennes/Knox Preservation Foundation, Inc.
Western Wayne Heritage, Inc.
Winchester Main Street Program
Wythougan Valley Preservation Council, Inc.



Film Premiere: *The Inquisitor*

Feb. 23, Indianapolis

INDIANA LANDMARKS partners with WFYI to host an Indie Lens Pop-Up screening of *The Inquisitor*, a documentary exploring the life and legacy of Barbara Jordan, groundbreaking Texas congresswoman whose sharp intellect and moral clarity transformed U.S. politics. From Nixon’s impeachment to civil rights battles, her voice demanded accountability, while she privately faced struggles few ever knew of. 6-8 p.m. at Indiana Landmarks Center. Free and open to the public. Advance registration encouraged.



INDIANA LANDMARKS

1201 Central Avenue
Indianapolis, IN 46202

Nonprofit Org.

PAID

U.S. Postage
Indianapolis, IN
Permit No. 3464

AND FINALLY



Double Take

THERE'S NOTHING WE LOVE

better than a good “before” and “after.” More than just an attention-getting gimmick, stabilizing long-ailing properties showcases their potential and improves curb appeal to attract buyers who appreciate historic character.

It's an approach we've taken in Wabash, where Indiana Landmarks acquired several historic homes in the East Wabash Historic District and completed exterior restoration, aiming to spur homeownership in the historic residential area. In 2025, we completed exterior

In Wabash, Indiana Landmarks has fueled restoration and sale of several houses in the East Wabash Historic District, with a goal of boosting homeownership in the neighborhood. Our latest project, 196 East Main Street (above), showcases a “before” and “after” worth a second look. Visit our website for listing details (see right).

PHOTOS BY PAUL HAYDEN

transformation of a c.1900 house at 196 East Main Street, removing unsightly additions and overgrown shrubbery that obscured the home's front façade. We rebuilt the original porches with Queen Anne details, uncovered an original stained-glass window, and added an eye-catching exterior paint scheme.

Now we're looking for a buyer to continue the work inside. See the listing on our website: indianalandmarks.org/properties-for-sale.