

# GRAND HALL

## Main Floor

### CAPACITY

**450 total**

**Main floor** (inclined floor)

- 350 in cushioned pews
- 4 sections (13-14 rows each center and side aisles)

**Balcony**

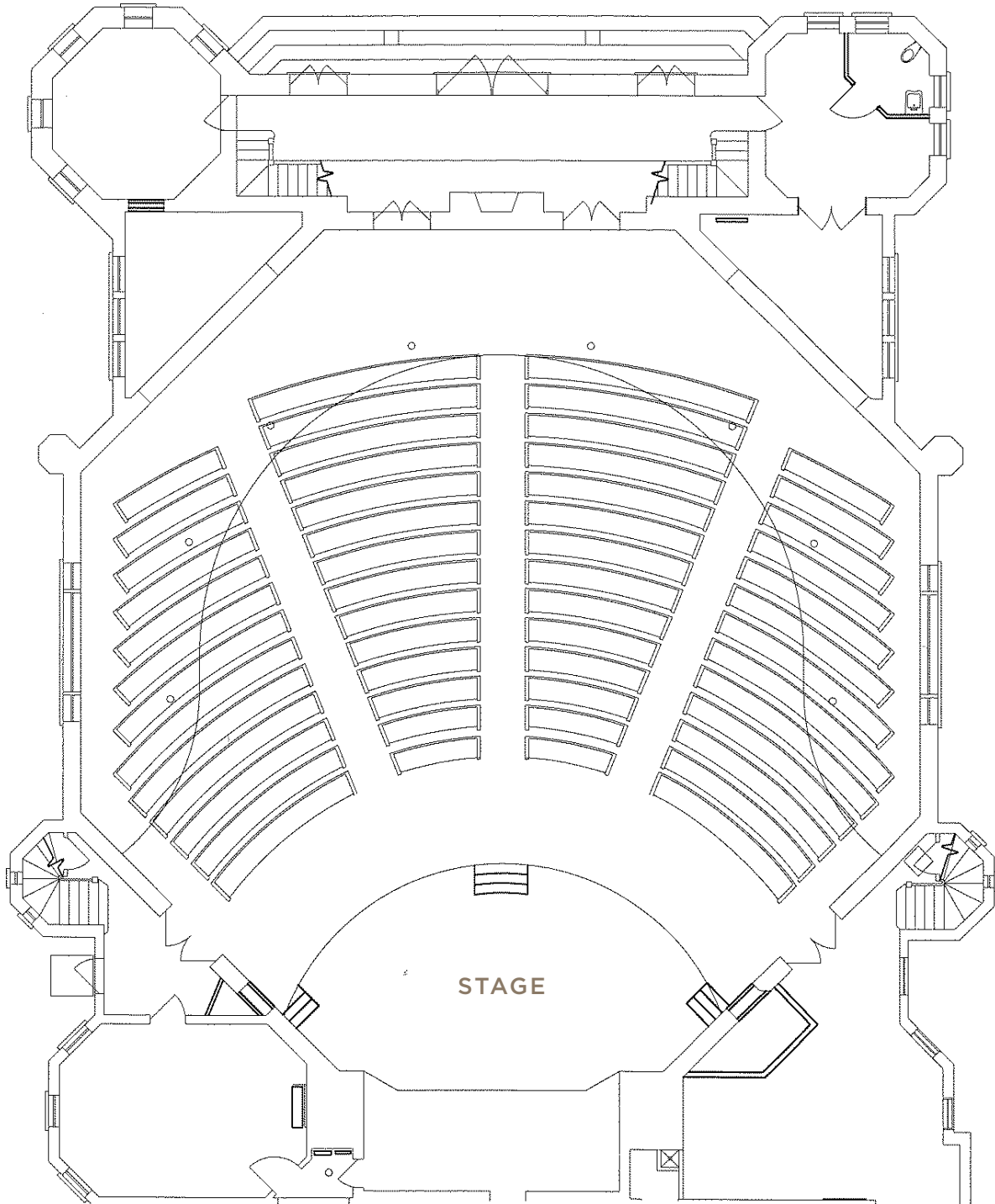
- 100 in cushioned pews
- 4 sections (3 rows each)

**Semi-circular thrust stage** (34' x 18')

- Organ console and piano positioned on stage

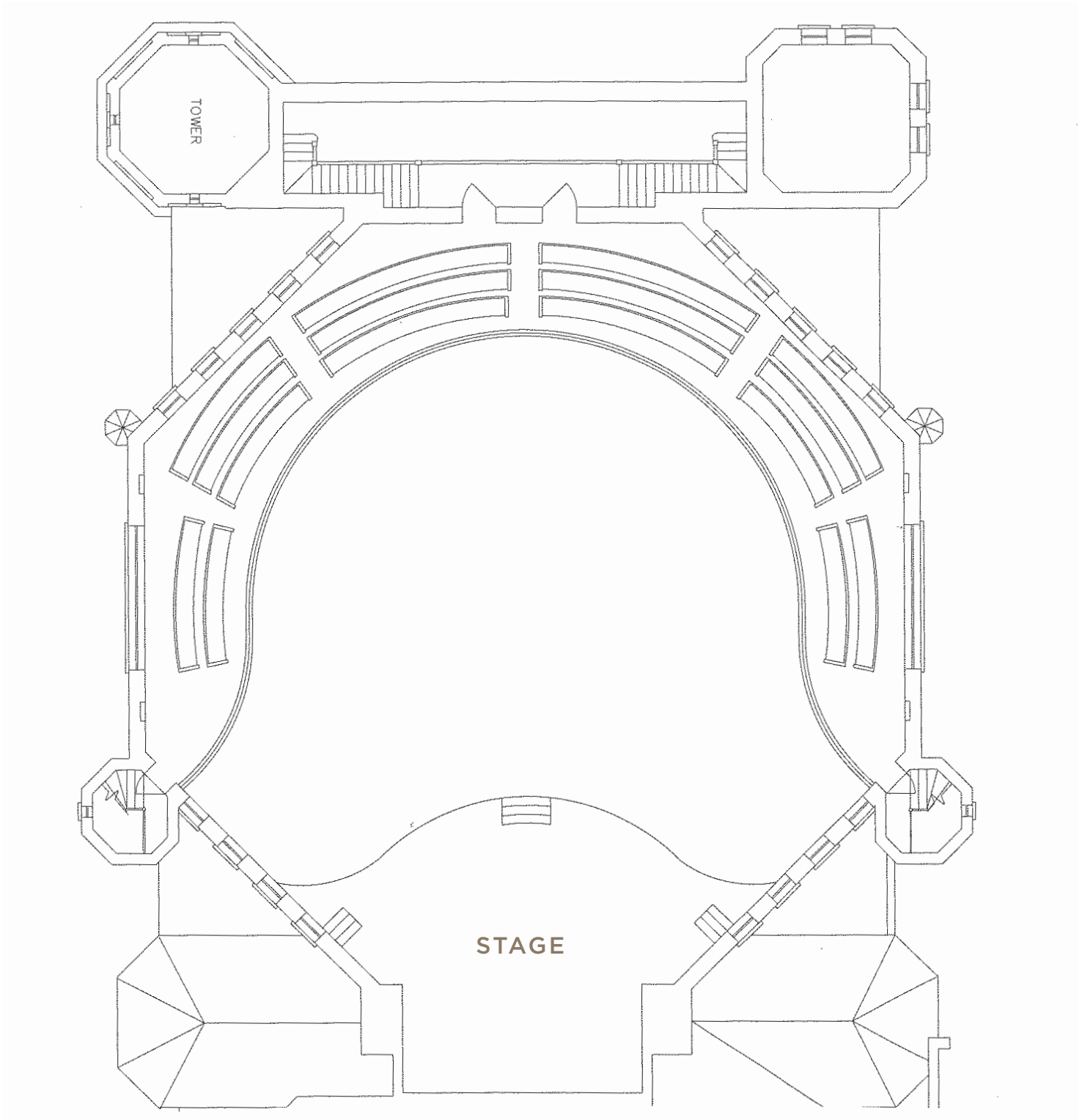
### SPECIAL FEATURES

- Restored organ with stenciled and gilded pipes
- Steinway Model D concert grand piano
- Theatrical stage lighting
- Sound amplification system
- Retractable screen and concealed projector
- Multiple colored lighting effects for ceiling, dome and gilded chandelier
- Bride's dressing room
- Groom's waiting room



# GRAND HALL

Balcony



# COOK THEATER

1st Floor

## DIMENSIONS

**Theater** (1625 sq. ft.)

**Theater / adjacent rooms** (2685 sq. ft.)

**Theater / adjacent rooms / mezzanine**  
(4410 sq. ft.)

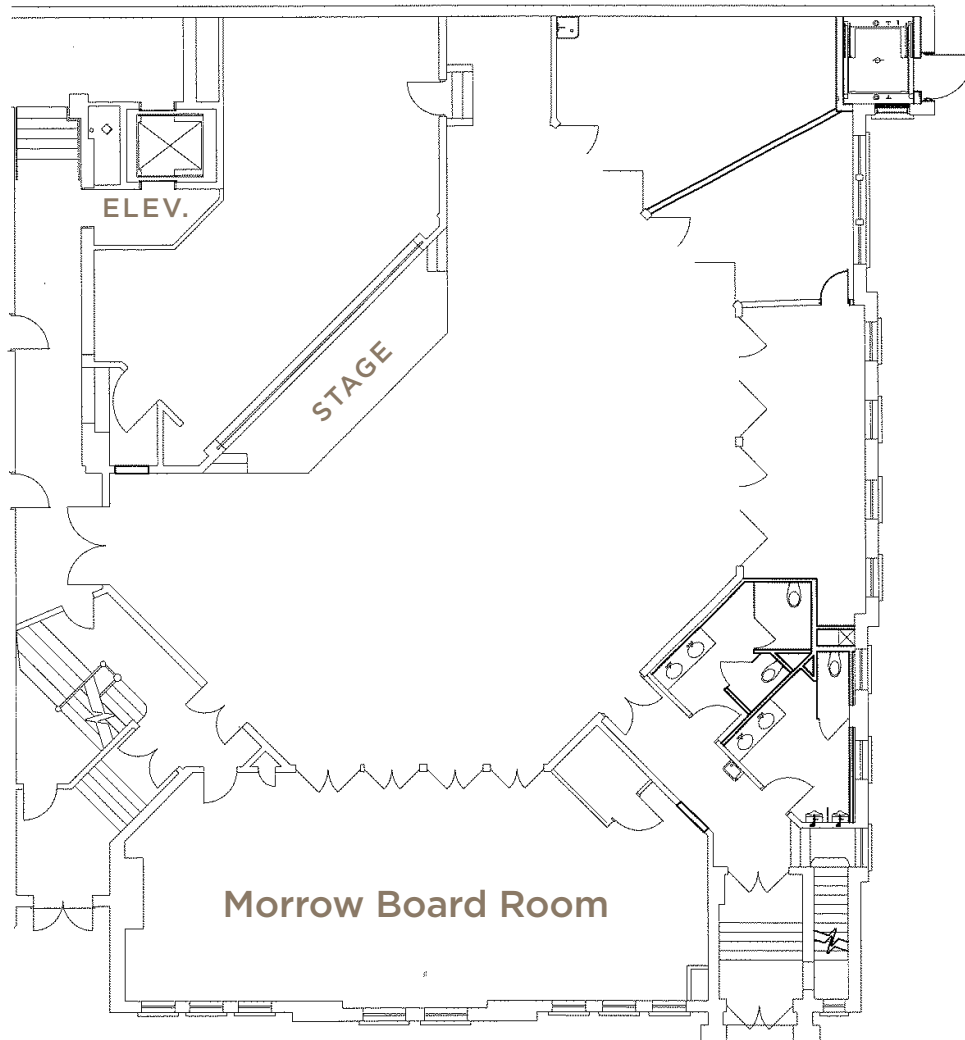
## SPECIAL FEATURES

- Theatrical stage lighting
- Sound amplification system
- Retractable screen and concealed projector
- Catering service kitchens on main level and mezzanine
- Automatic shades for clerestory windows
- Original fir walls and ceiling; antique chandelier
- Proscenium stage with sound and lighting systems and curtains
- Yamaha C-3 piano on stage

## Morrow Board Room

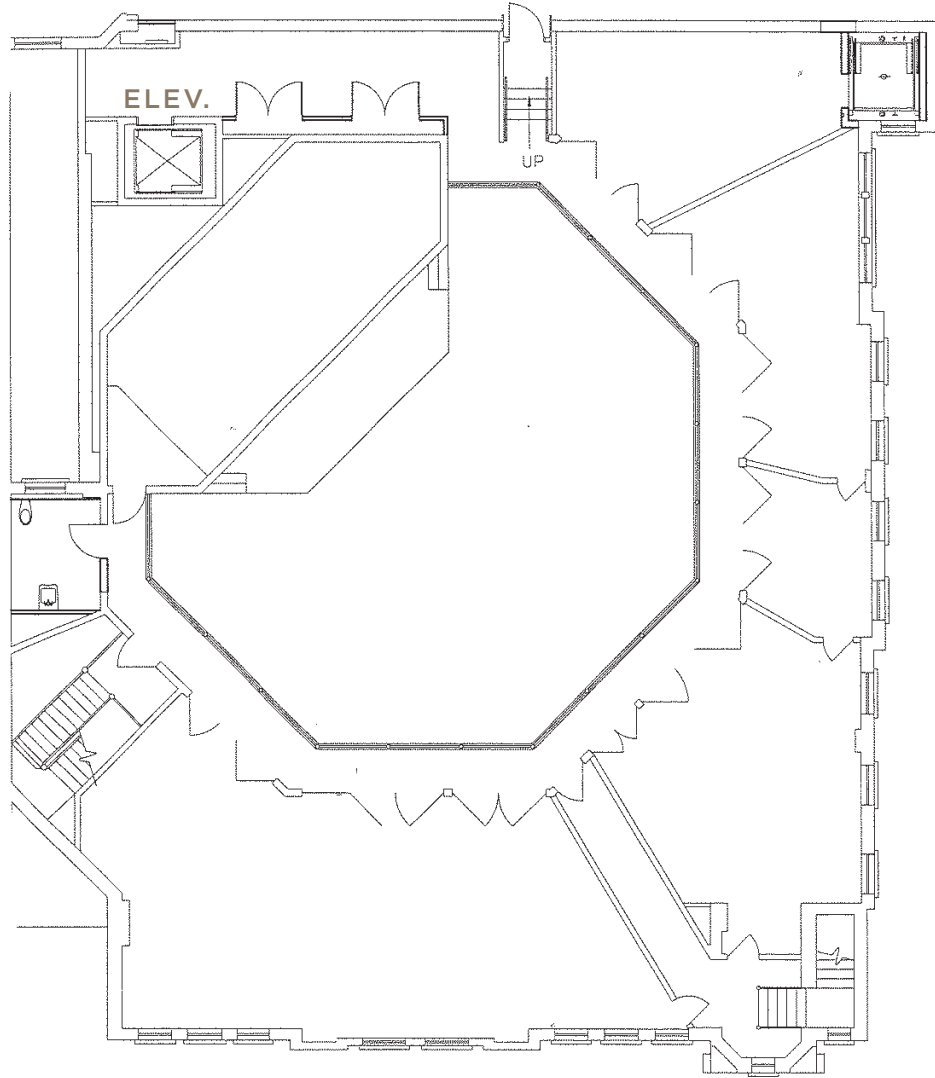
**11' wide x 51' long** (561 sq. ft.)

- Retractable screen and concealed projector
- Sound system
- Fireplace; antique chandelier



# COOK THEATER

Mezzanine



# RAPP FAMILY GALLERY

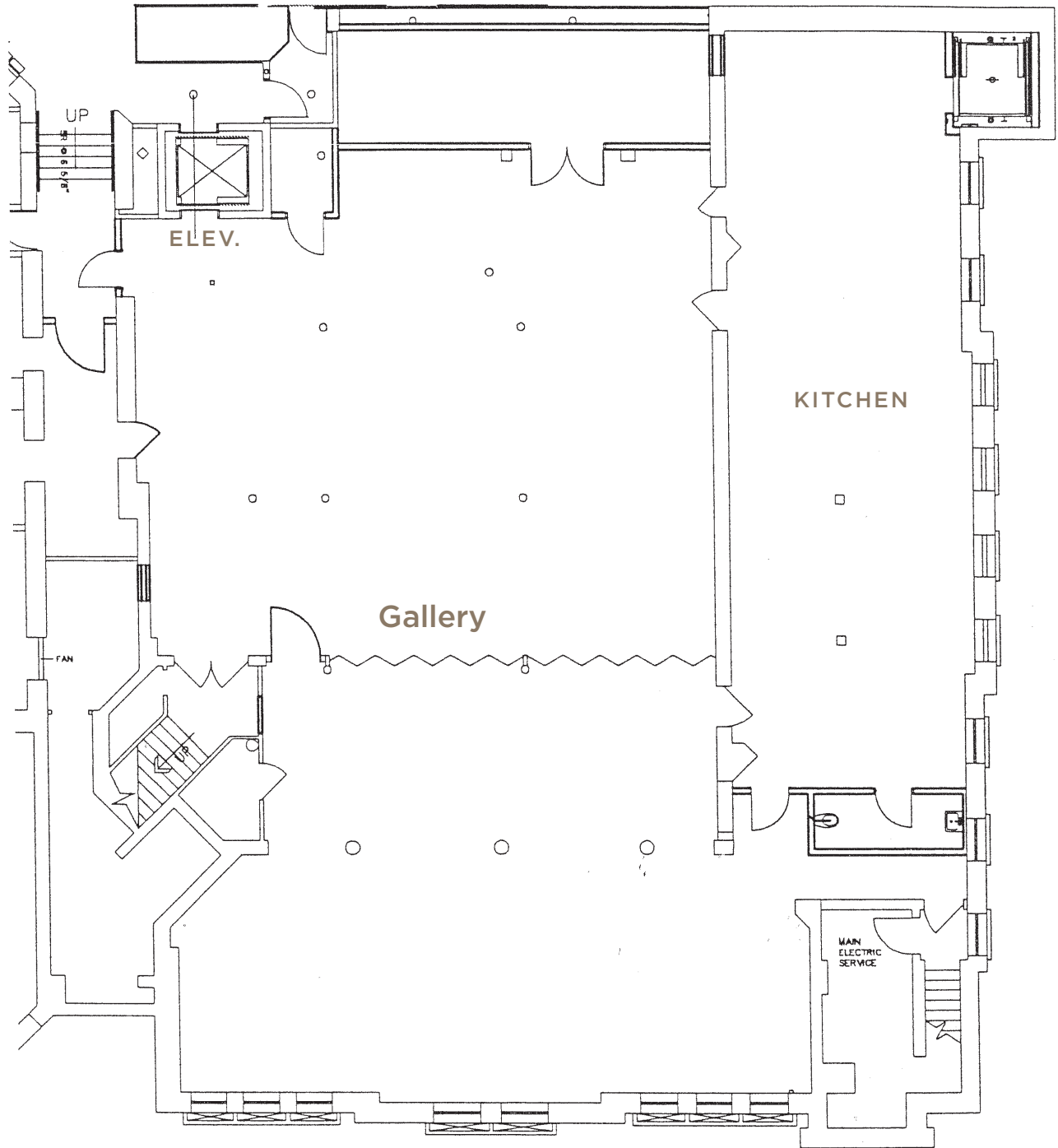
Basement Level

## DIMENSIONS

46' wide x 75' long (3450 sq. ft.)

## SPECIAL FEATURES

- Gallery lighting and exhibit system
- Drapes; fireplace
- Retractable acoustical dividing wall



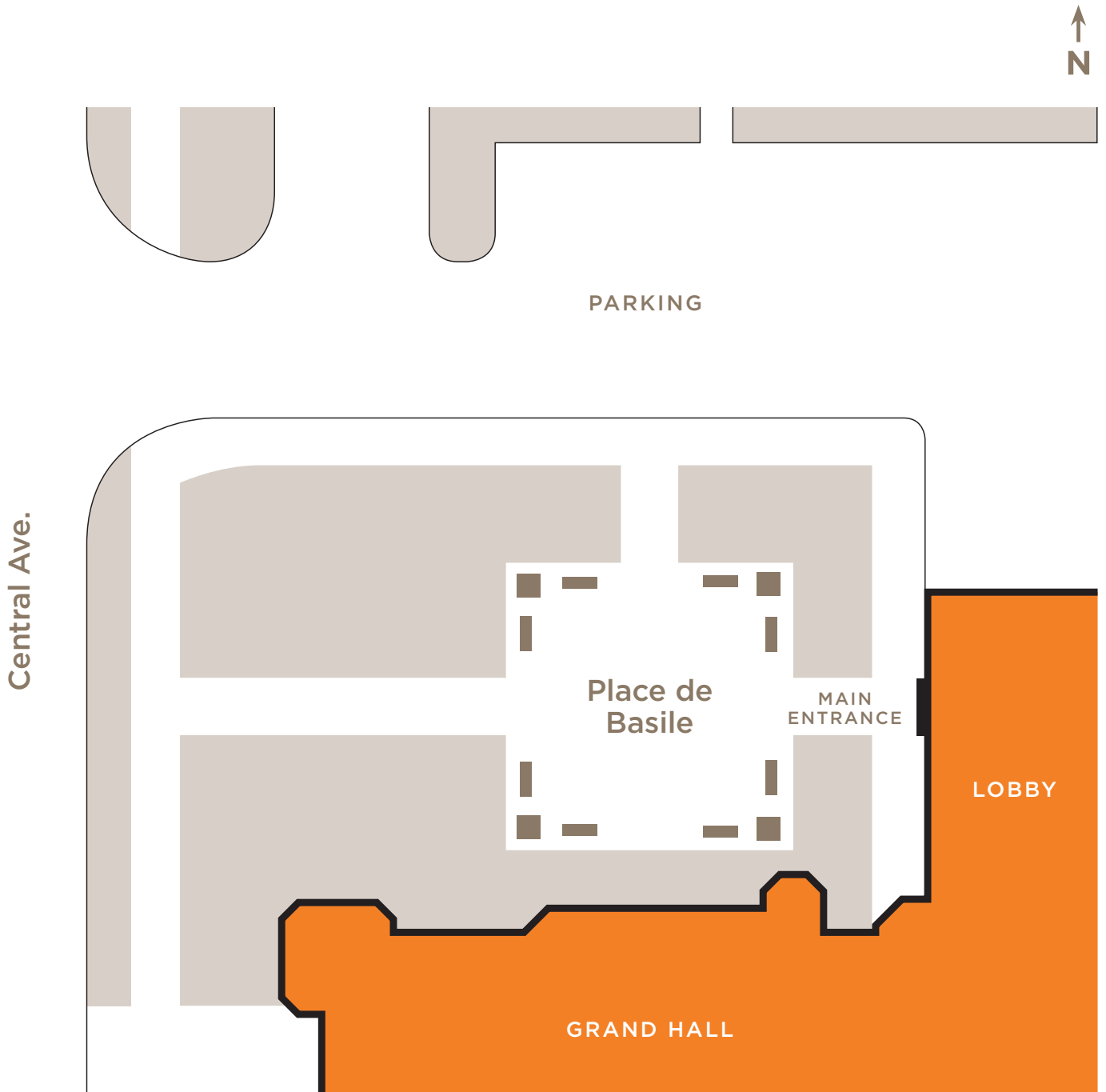
INDIANA LANDMARKS CENTER  
**PLACE DE BASILE  
COURTYARD**

**CAPACITY**

- 40' x 40' (1600 sq. ft.)
- 200 standing reception

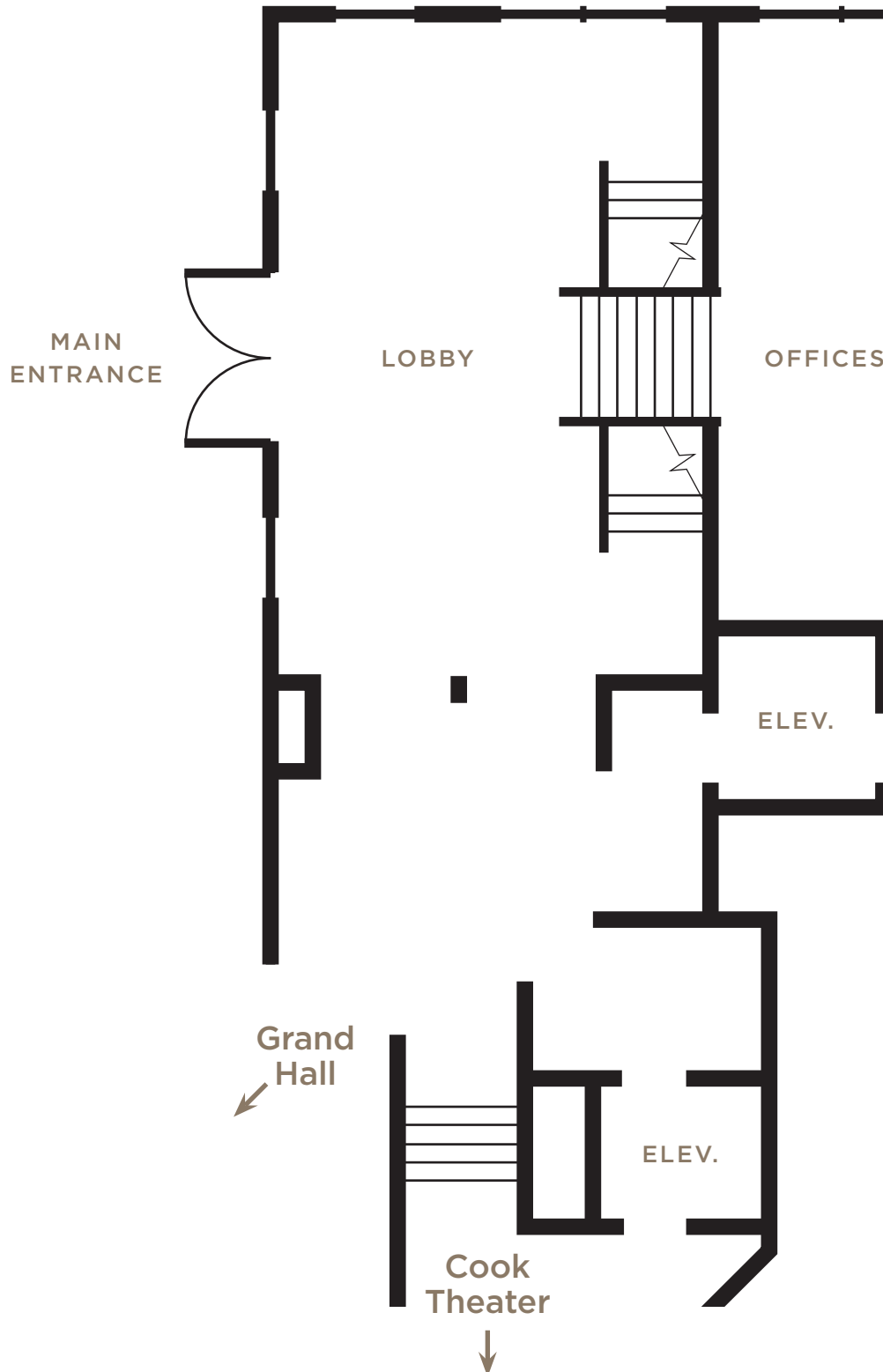
**SPECIAL FEATURES**

- accommodates 30' x 30' tent



# LOBBY

Ground Level



# MORRIS-BUTLER HOUSE 1st Floor

## CAPACITY

### Parlor

Ideal for ceremonies, dinners, luncheons, lectures, meetings, seminars

**17' wide x 30' long** (510 sq. ft.)

- 40 seated ceremony
- 32 seated dinner
- 40 standing reception

## SPECIAL FEATURES

- Victorian gilded and crystal chandelier, gilded mirror, marble fireplace, crown molding
- Decorative plaster detail in ceiling
- Landscape paintings by noted Indiana artist Jacob Cox
- Entry hall with Victorian furniture (can be used as registration/welcome area)

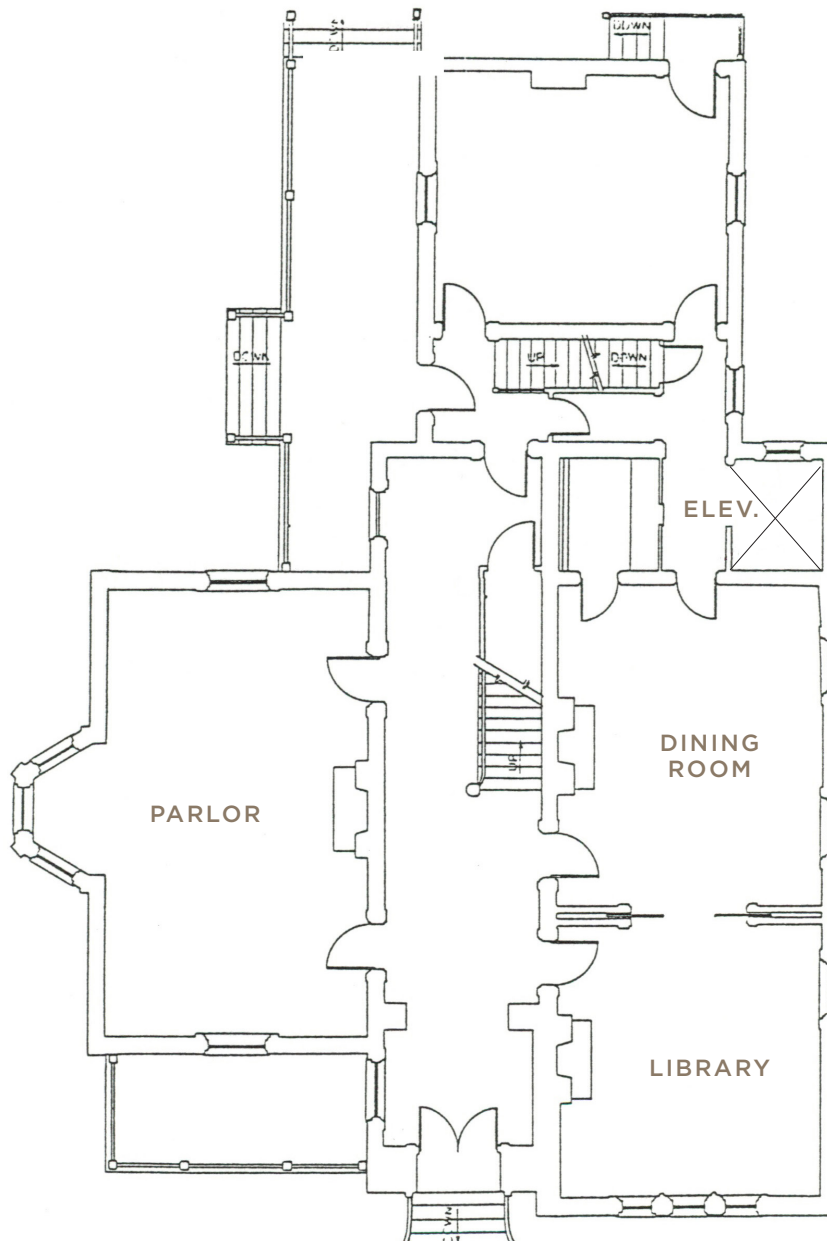
### Dining Room & Library

Ideal for dinners, luncheons, teas, lectures, meetings, seminars

**15' wide x 36' long** (540 sq. ft.)

- 40 seated reception or dinner
- 40 standing reception

- Adjoining rooms with 6.5-ft opening between
- Victorian furnishings
- Fireplace in each room
- Entry hall with Victorian furniture (can be used as registration/welcome area)



# MORRIS-BUTLER HOUSE Exterior

## CAPACITY

### Lawn

Ideal for ceremonies, receptions, picturesque location for wedding party photos

- Accommodates:
  - 40' x 40' tent on southwest lawn
  - 40' x 40' tent on northeast lawn
  - 20' x 40' tent on north lawn
- 125 seated ceremony
- 250 standing reception

## SPECIAL FEATURES

- Sizeable lawn on east and south sides of Victorian-era house

